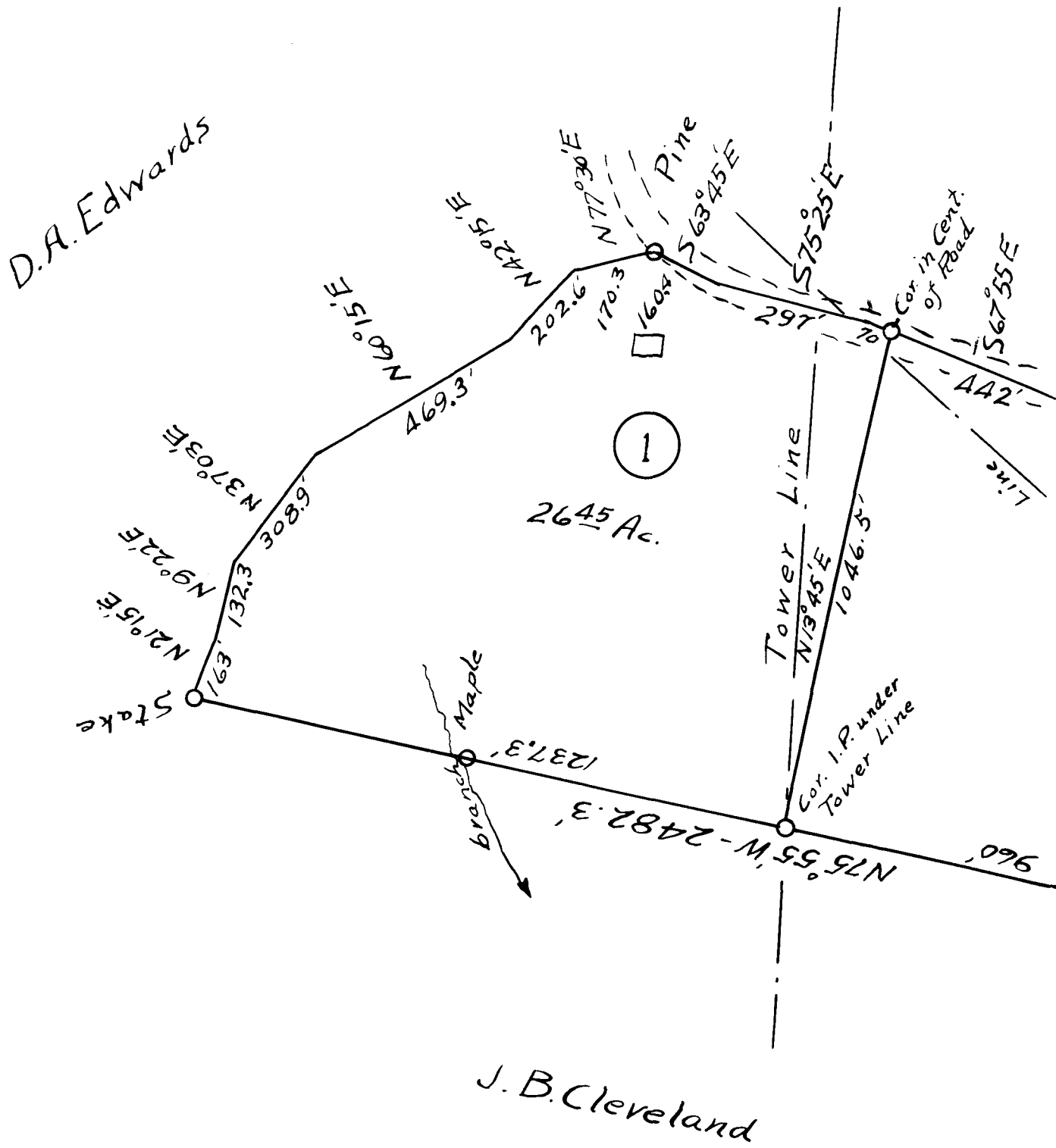


33

EX PARTE  
THOS. EDWARDS EST.

James Wolfe



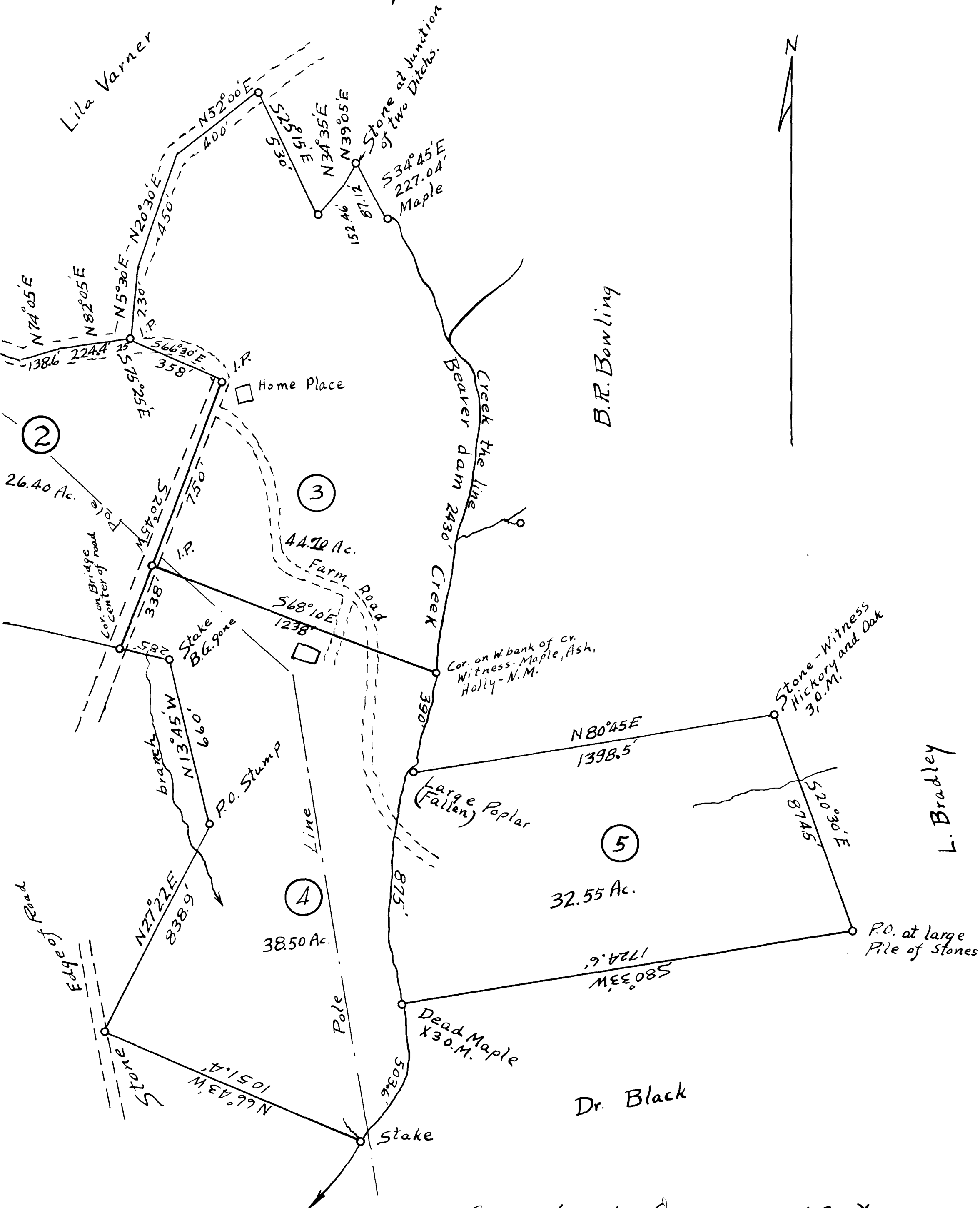
THOS. EDWARDS EST.

Campobello Township  
Spartanburg County S.C.

The above land is situated about 2 Mi. S.E. of Landrum, S.C. on the Campobello road, Creek and Division Lines run by W.H. Ladshaw. Oct. 14, 1939, The remainder run by M.E. Johnson, in 1905 and 7, With the exception of Lot No. 9 of the Lancaster Land (as shown by the dashed line) Surveyed by W.N. Willis in 1919. All bearings Calculated up to 1939. By W.H. Ladshaw Surveyor  
Scale: 300' = 1"

McCravey

Lila Varner



Registered, Certified & Examined Dec. 11, 1939 at 9:24 a.m.