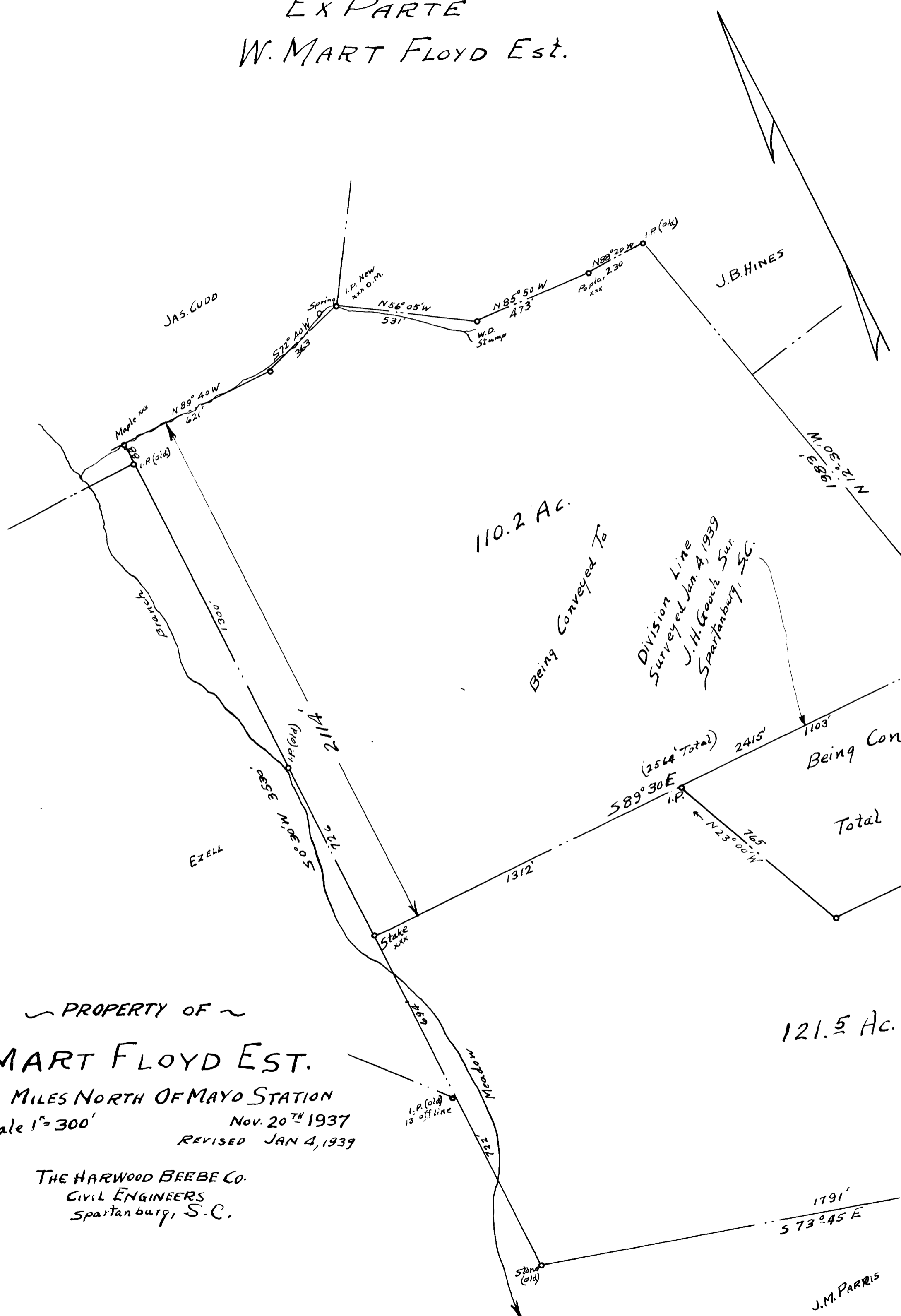


35

EX PARTE W. MART FLOYD Est.



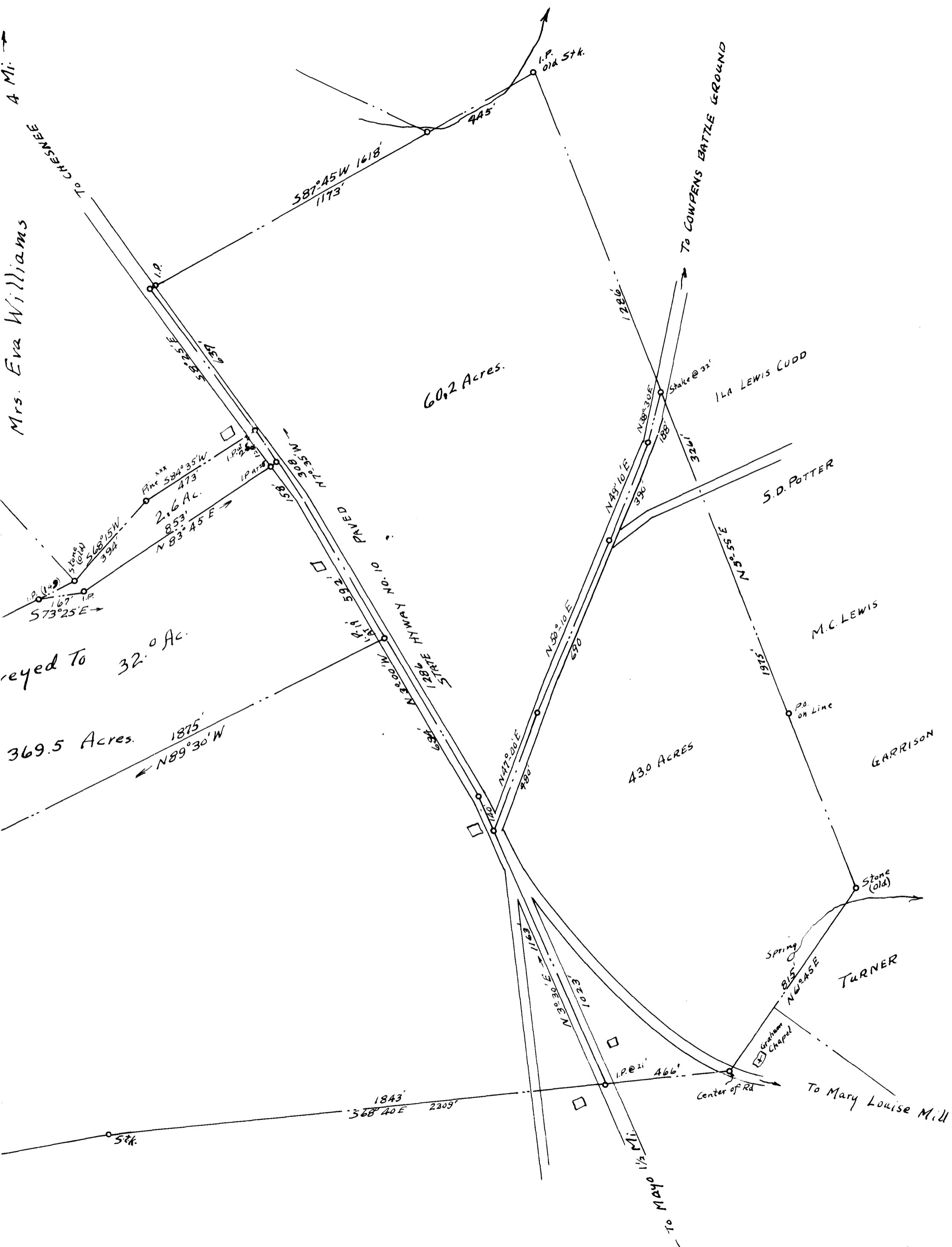
PROPERTY OF
W. MART FLOYD EST.

1 1/2 MILES NORTH OF MAYO STATION
Scale 1" = 300'
Nov. 20TH 1937
REVISED JAN 4, 1939

THE HARWOOD BEEBE CO.
CIVIL ENGINEERS
Spartanburg, S.C.

121.5 AC.

J.M. PARRIS



Mrs. Eva Williams

veyed To 32.0 Ac.

369.5 Acres

60.2 Acres.

43.0 ACRES

Registered, Certified & Examined December 19-1939 at 1:05 P.M.