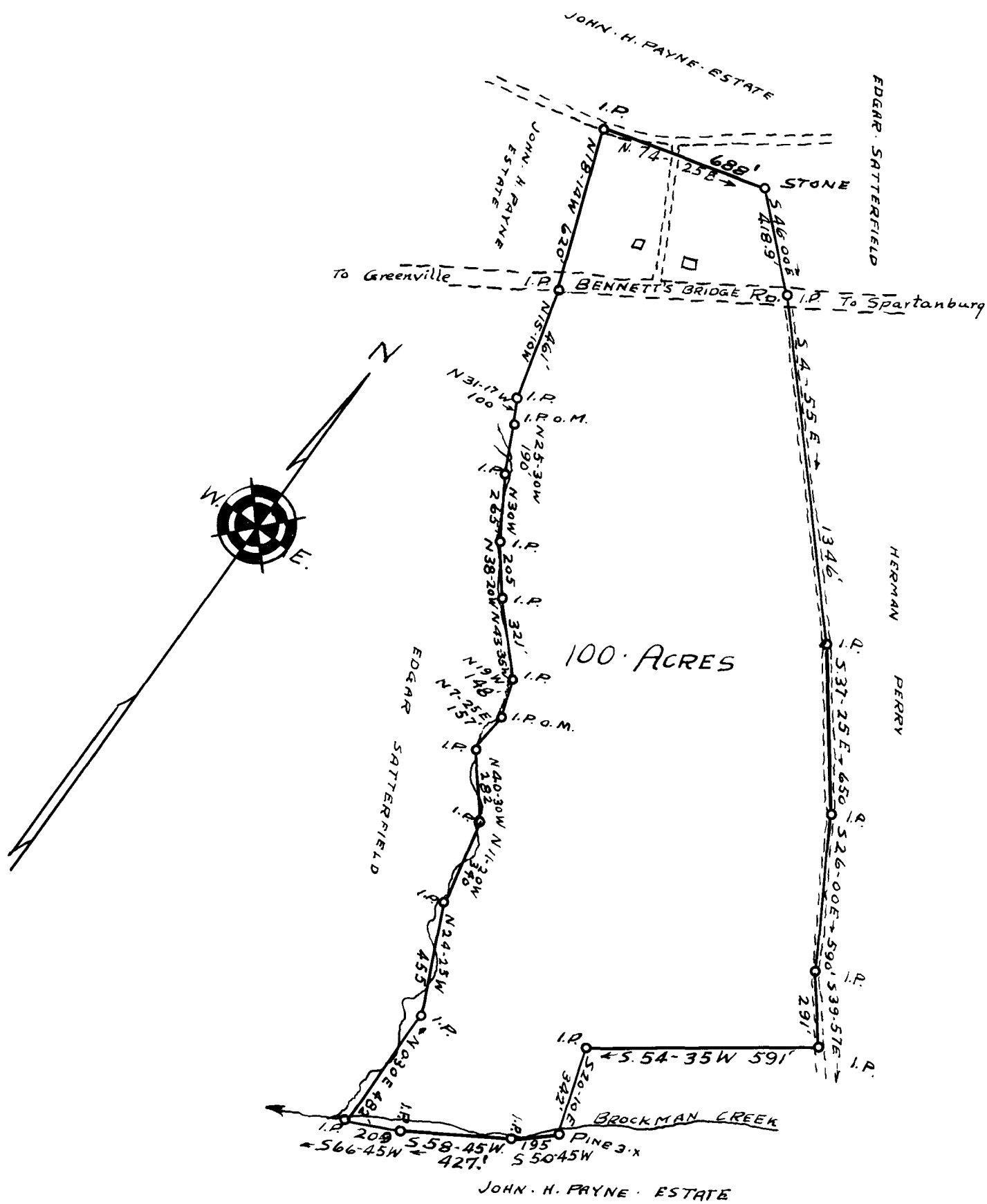


EX PARTE  
John H. Payne Est.



PROPERTY OF  
**JOHN H. PAYNE ESTATE**  
 NEAR WOOLAWN SCHOOL  
 REIDVILLE TOWNSHIP SPARTANBURG COUNTY  
 SOUTH CAROLINA  
 Scale: 1" = 500 FEET DECEMBER 29 1938  
 SURVEYED DECEMBER 27, 1938  
 H. S. BROCKMAN - Surveyor  
 GREER, S. C.

Registered, Certified + Examined Dec. 21-1939 at 12:13 P.M.