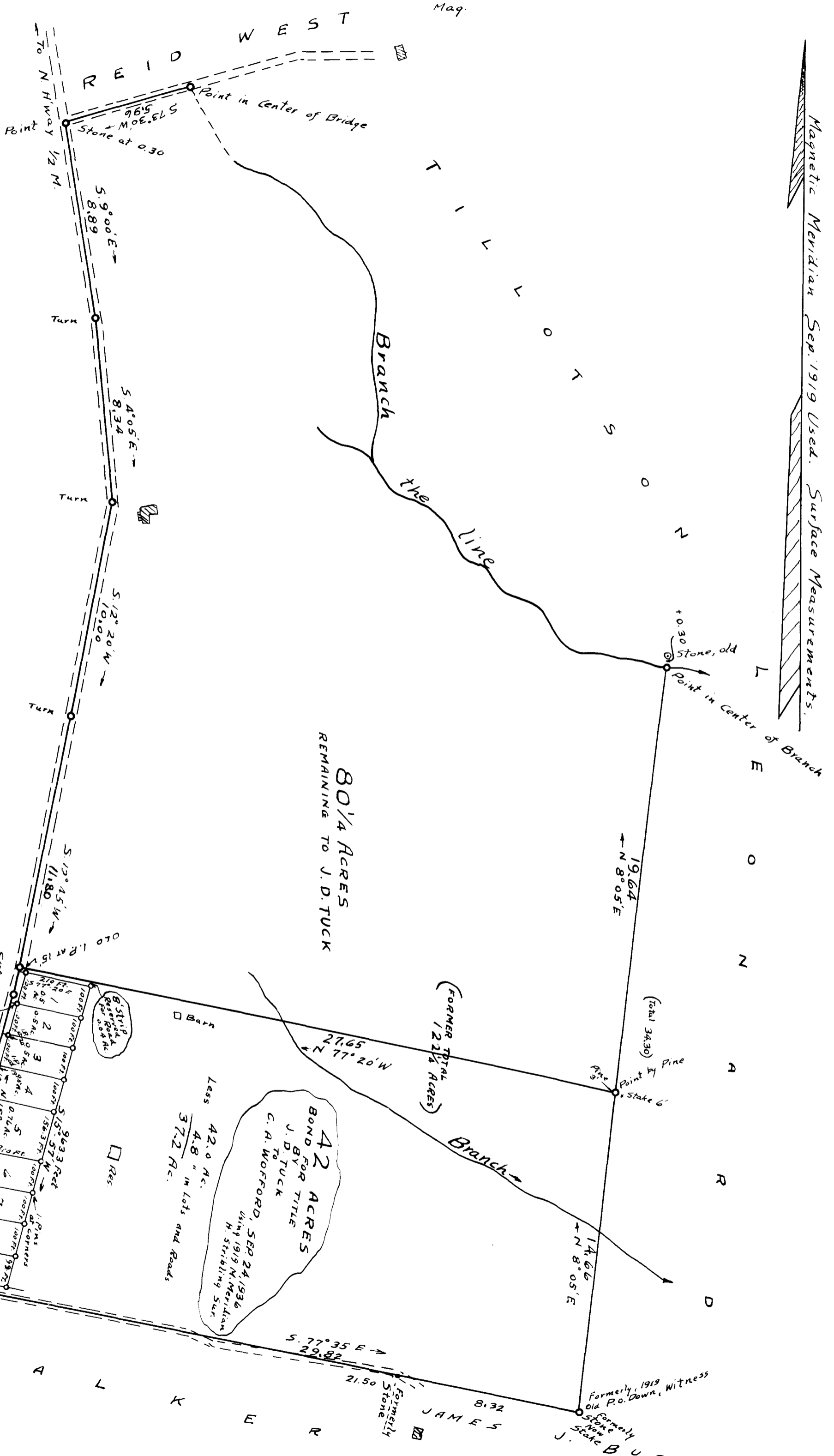


38

EX PARTE
C. A. Wofford



SURVEY OF A PURCHASE BY C. A. WOFFORD (SEP 24, 1936)
 CUT FROM THE J. D. TUCK FARM
 USING 1919 MAG. MER

1 1/2 M. SW DISPUTANTA, SPARTANBURG CO. SO. CA.
 WHOLE SURVEYED SEP. 18, 1919
 H. STRIBLING SURV'R.

LOTS 1 THRU 9 STAKED OFF
 Nov. 21, 1939 BY C. B. VASS

Scale: 1 Inch = 4 Chains

Note: All bearings on small
 lots calculated to prop. line
 in C. of Road

Registered, Certified & Examined Jan. 2, 1940 at 3:30 P.M.