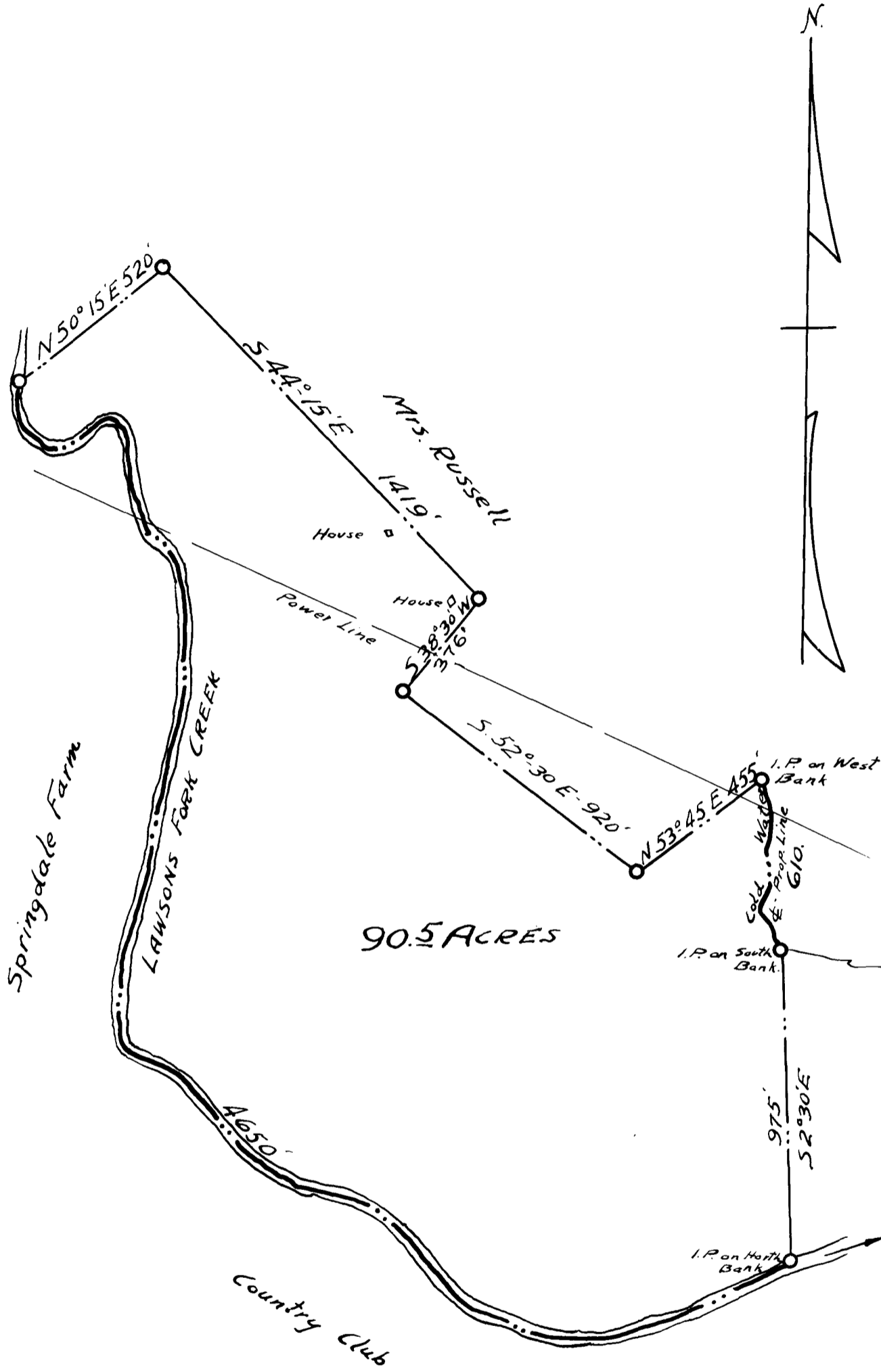


EX PARTE

Mrs. Joan C. Montgomery



90.5 ACRES

PROPERTY OF
MRS. JOAN C. MONTGOMERY

ON
LAWSON'S FORK CREEK

IN SPARTANBURG COUNTY, SOUTH CAROLINA

SCALE: 1"=400' SEPTEMBER 27, 1939

THE HARWOOD BEEBE COMPANY
MUNICIPAL AND CIVIL ENGINEERS
SPARTANBURG, S. C.

Registered, certified + Examined January 23rd 1940 at 9:55a.m.