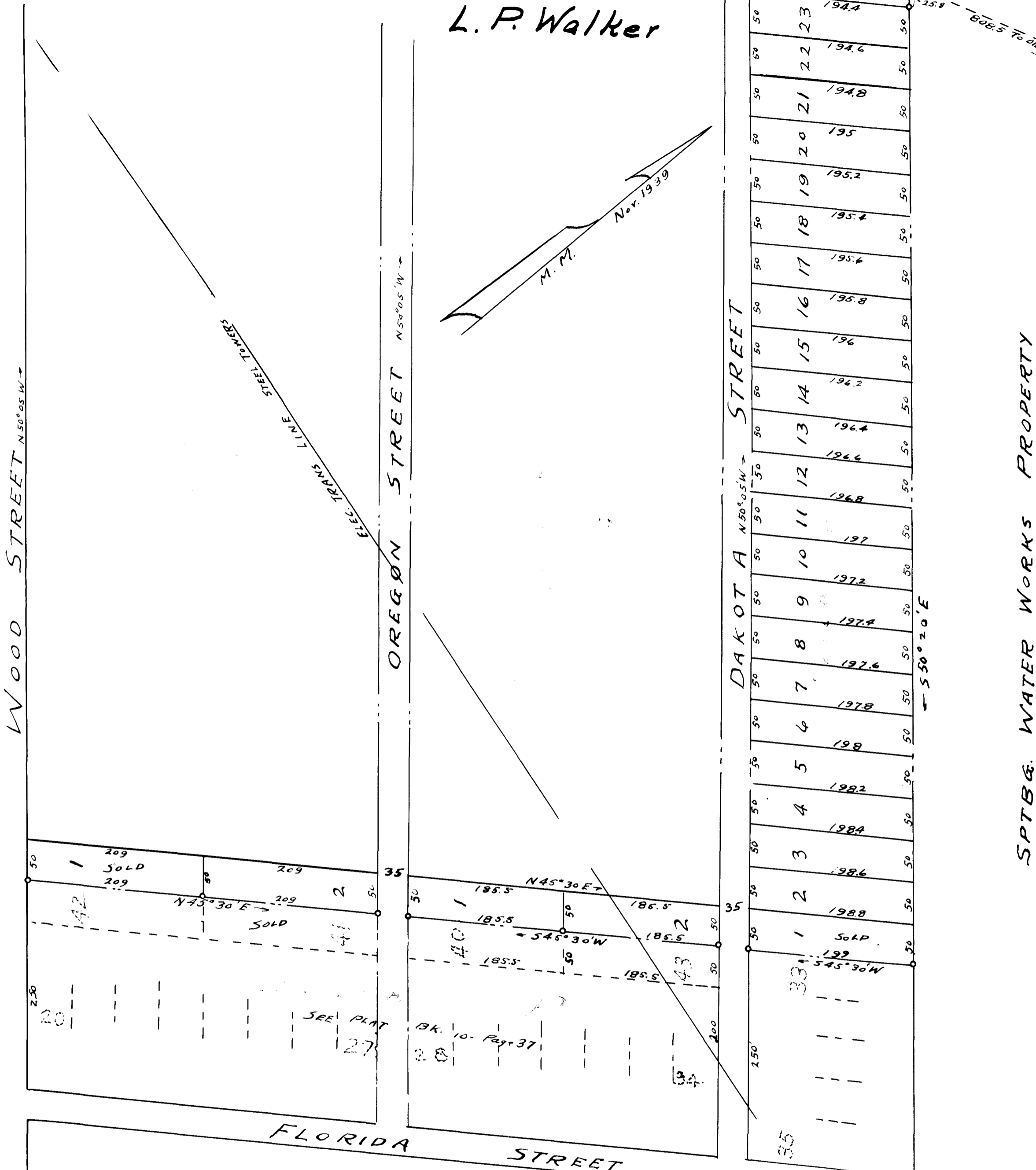


EX PARTE
L. P. Walker



PARTIAL SUBDIVISION
 PROPERTY OF
L. P. WALKER
 AT NORTHERN CITY LIMIT
 SPARTANBURG, S. C.
 SCALE: 1" = 100' DEC. 7, 1939
 SEE ALSO PLAT BY H. STRIBLING, C. E. Nov 8, 1927
 RECORDED IN PLAT BK 10, Pg. 37

J. H. GOOCH SUR.
 SPARTANBURG, S. C.
 FIELD C. B. MASS

Registered, Certified & Examined Feb. 16, 1940 at 10:45 a. m.

SPTB& WATER WORKS PROPERTY