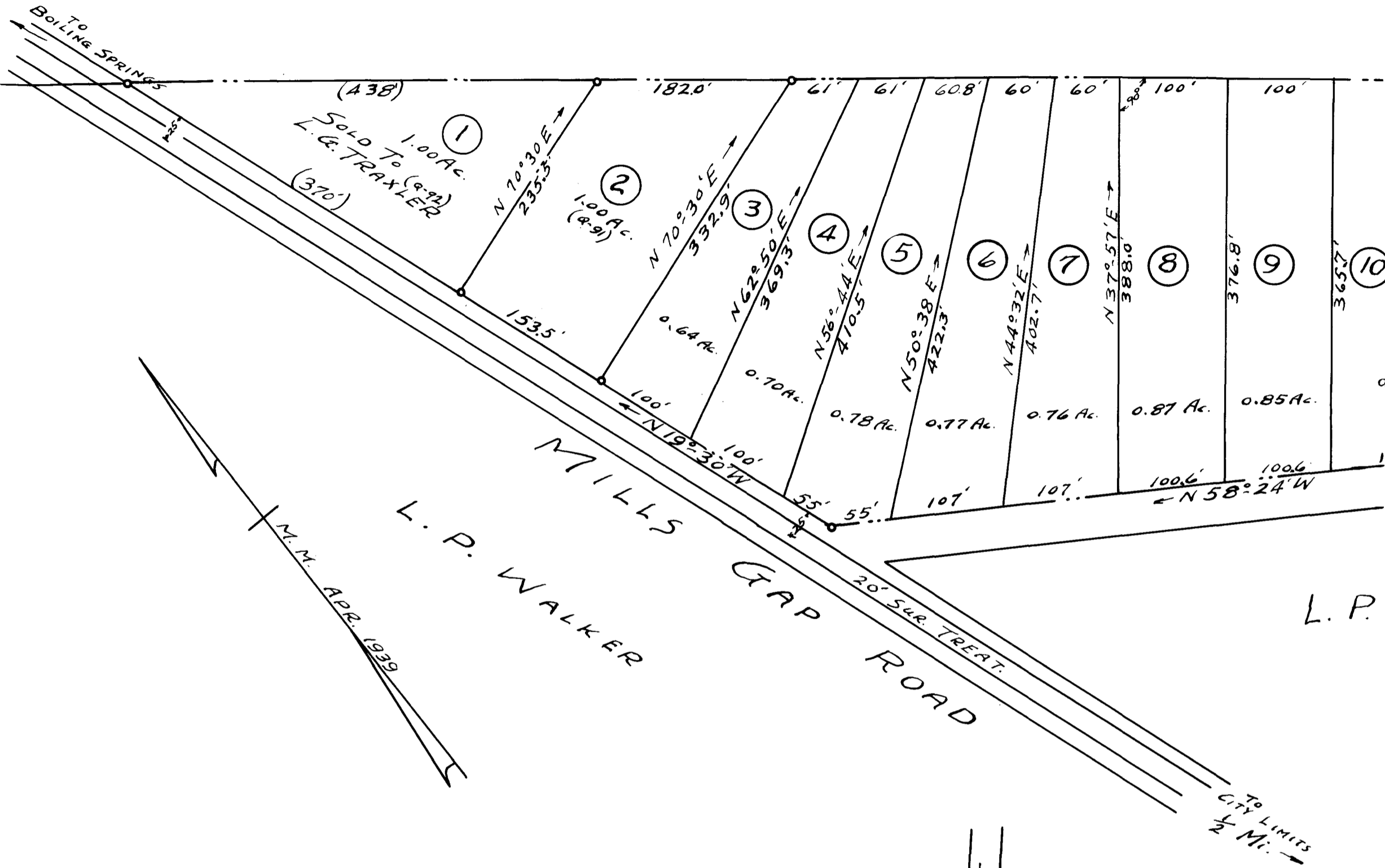


59

EX PARTE

L. P. WALKER PROP

FORMERLY



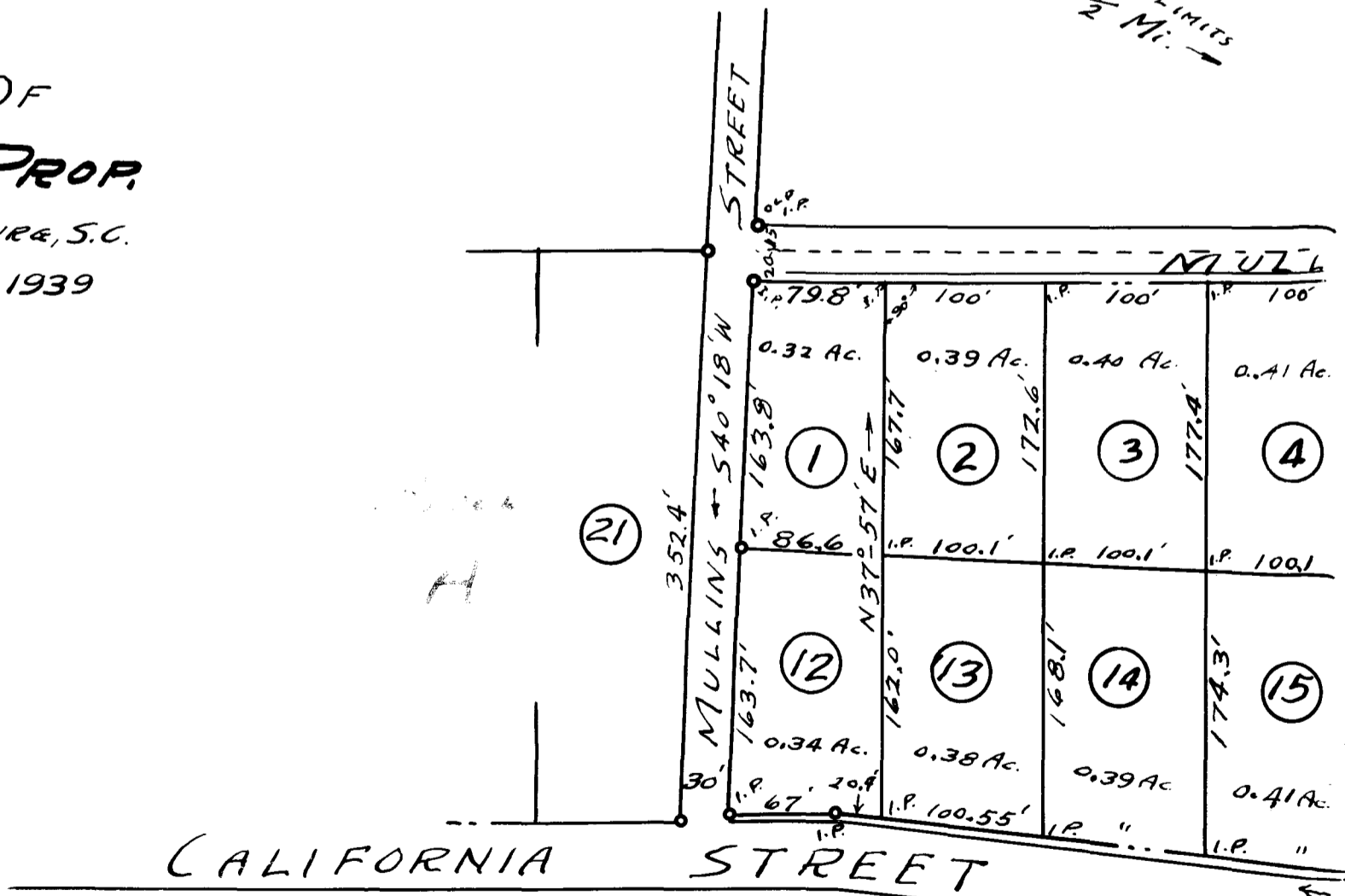
SUBDIVISION OF L. P. WALKER PROP.

ABOUT 1/2 MI. N. OF SPARTANBURG, S.C.

SCALE: 1" = 100' APR. 28, 1939

J. H. GOOCH, SUR.
SPARTANBURG, S.C.

FIELD: C. B. VASS



NOTE:
IRON PINS AT ALL COR

