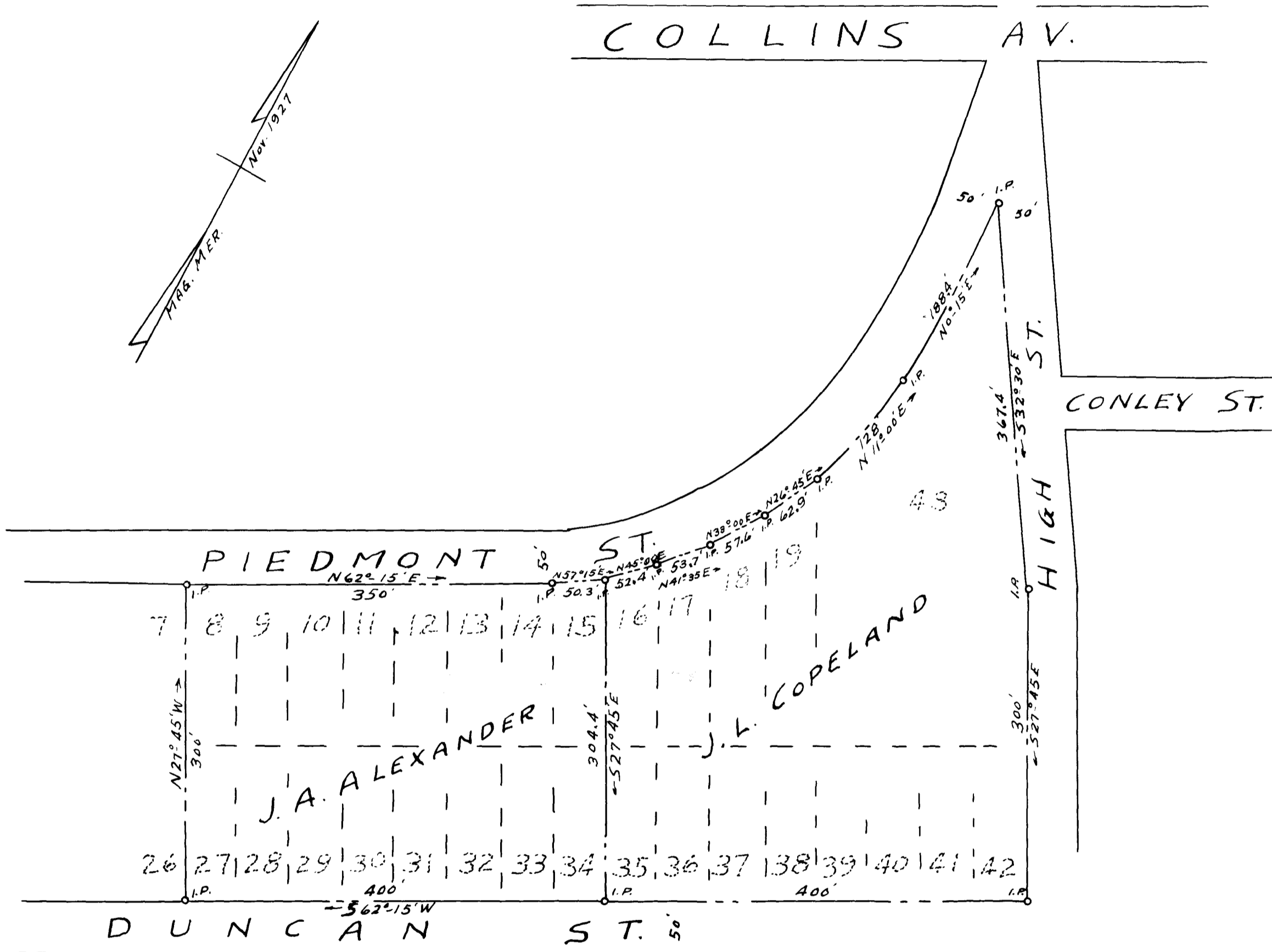


64

EX PARTE

J. A. ALEXANDER
AND
J. L. COPELAND



PROPERTY OF
 J. A. ALEXANDER
 AND
 J. L. COPELAND
 ADJOINING THE CITY OF SPARTANBURG, S. C.
 SCALE: 1" = 100' FEB. 28, 1940

TRACED FROM PLAT OF LINDBERGH HEIGHTS, MADE BY H. STRIBLING, C. E.
 NOV. 21, 1927. BEING LOTS 8-19 INCL. AND 27-43 INCL. IN BLOCK H
 J. H. GOOCH, SUR.
 SPARTANBURG, S. C.

Registered, Certified + Examined March 1st 1940 at 9:10 A.M.