

EX PARTE

# Sandford Smith

Laid down by a Scale of <sup>Nor</sup>  
20 chains for Inch.

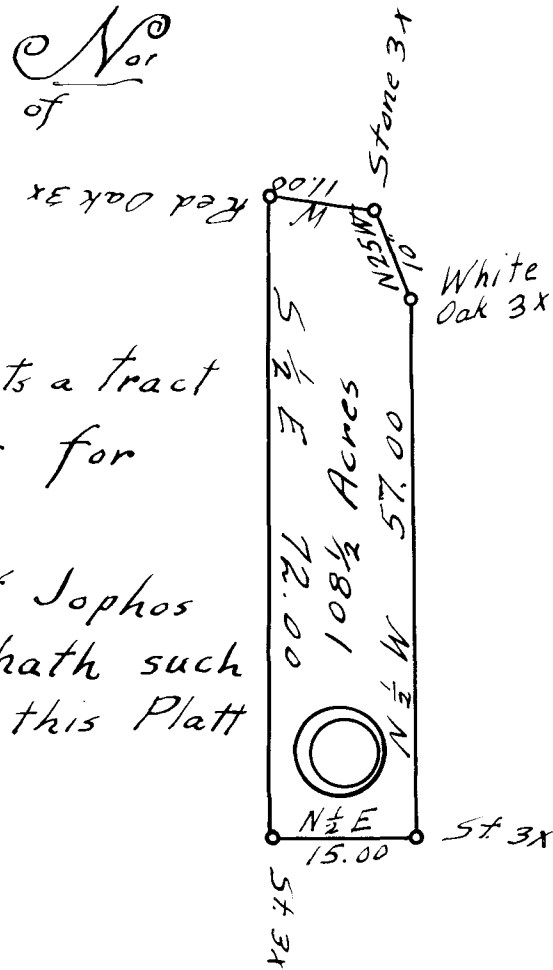
This Platt Represents a tract  
of land laid out for  
a ———  
A part of the land of Jophos  
Smith dist. and hath such  
form and marks as this Platt  
Represents

January 7<sup>th</sup> 1833

George Nicholls D.S.

## Sandford Smith

This Plat calls for 108½ Acres of Land



Registered, Certified + Examined April 29-1940 at 11:32 A.M.