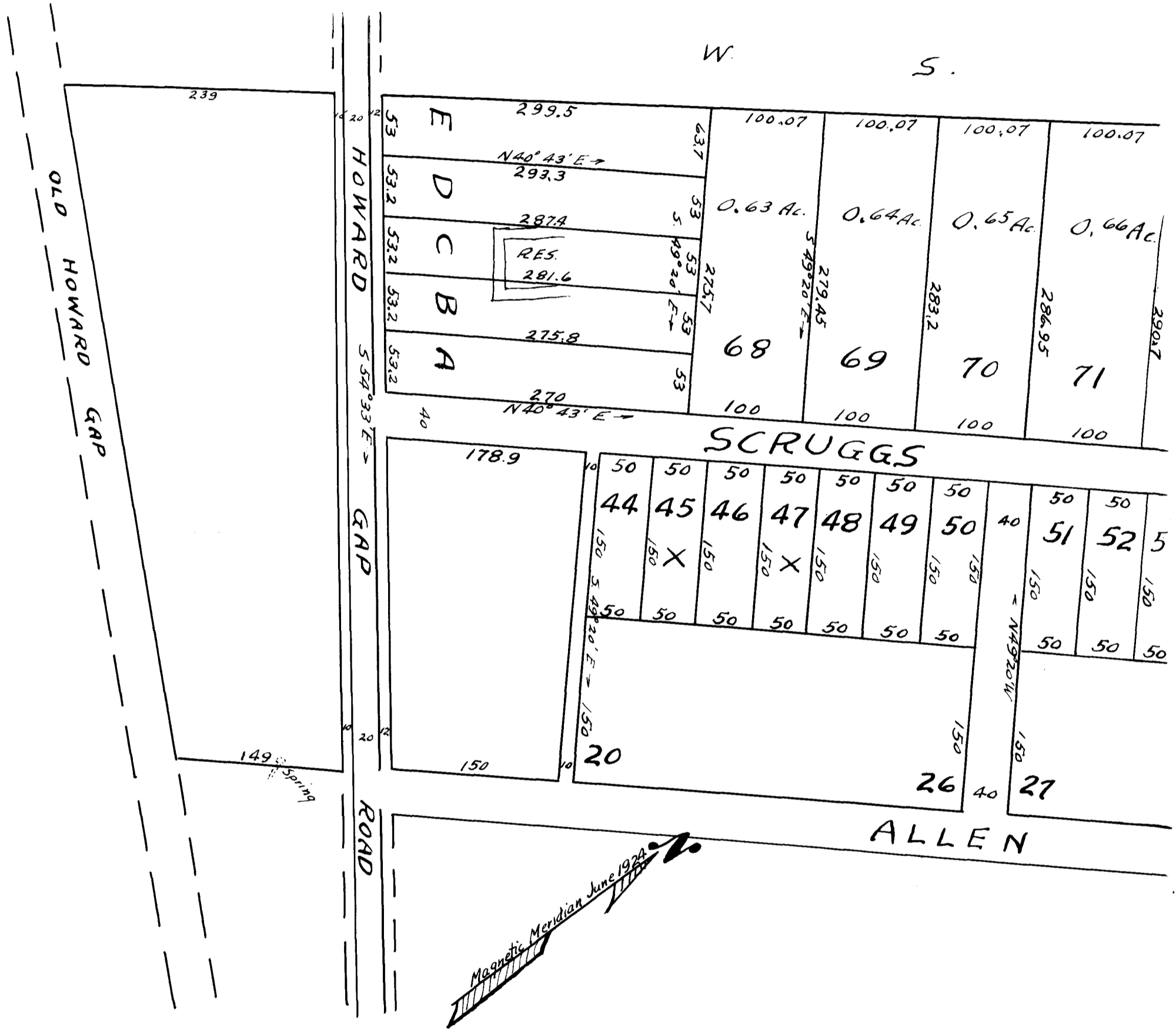


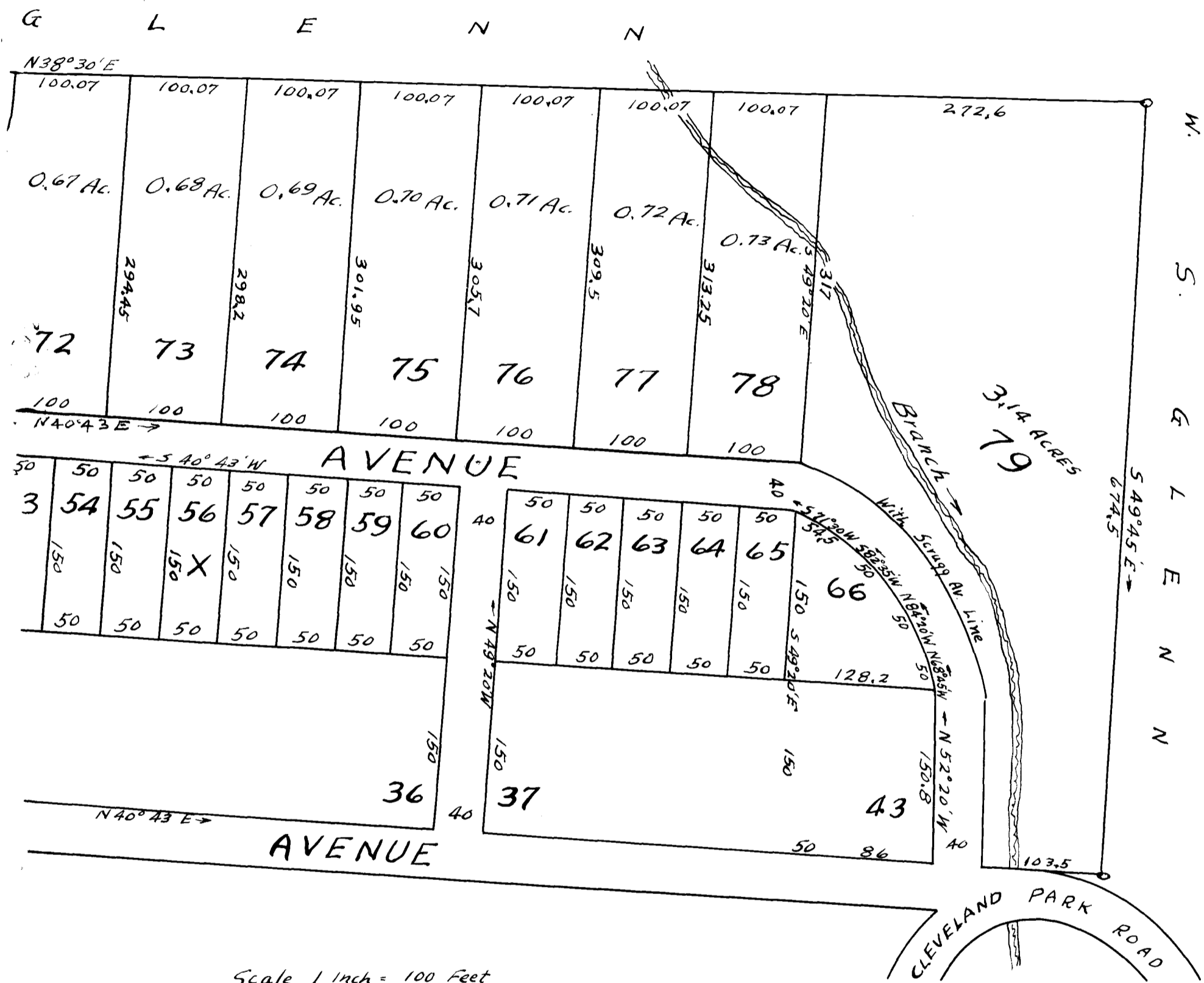
87

EX PARTE
Mrs. E. F. Scruggs



SUBDIVISION
 OF
 REMAINING AREAS AFTER VARIOUS LOT SALES
 OF
 MRS. E. F. SCRUGGS PROPERTY
 AT CITY LINE, SPARTANBURG COUNTY, S.C.
 APRIL 5, 1929
 H. STRIBLING, C.E.
 Iron Pins at all corners

Field: C. B. Vass



Scale 1 Inch = 100 Feet

Registered, Certified & Examined May 1-1940 at 11:15 a.m.