

95

GRANDVIEW

LAUREL

SPRUCE

FAIRVIEW

55° 27' E 1245'

BOUNDARY DRIVE

DRIVE

Garner Street

Sold to C.J. Blanton  
Subdivided May 8, 1940  
as Fairview Heights Annex.

Transmission Line

DUKE POWER CO.

N 34° 48' W 286'

(S 74° 53' W) 295.5  
Corrected Course

523° 13' E 202.3

N 23° 13' W 669.5

Sold to C.J. Blanton

Barn

House

(N 79° 45' W)

N 74° 12' E 304.2

312.8

321.4

338.6

347.2

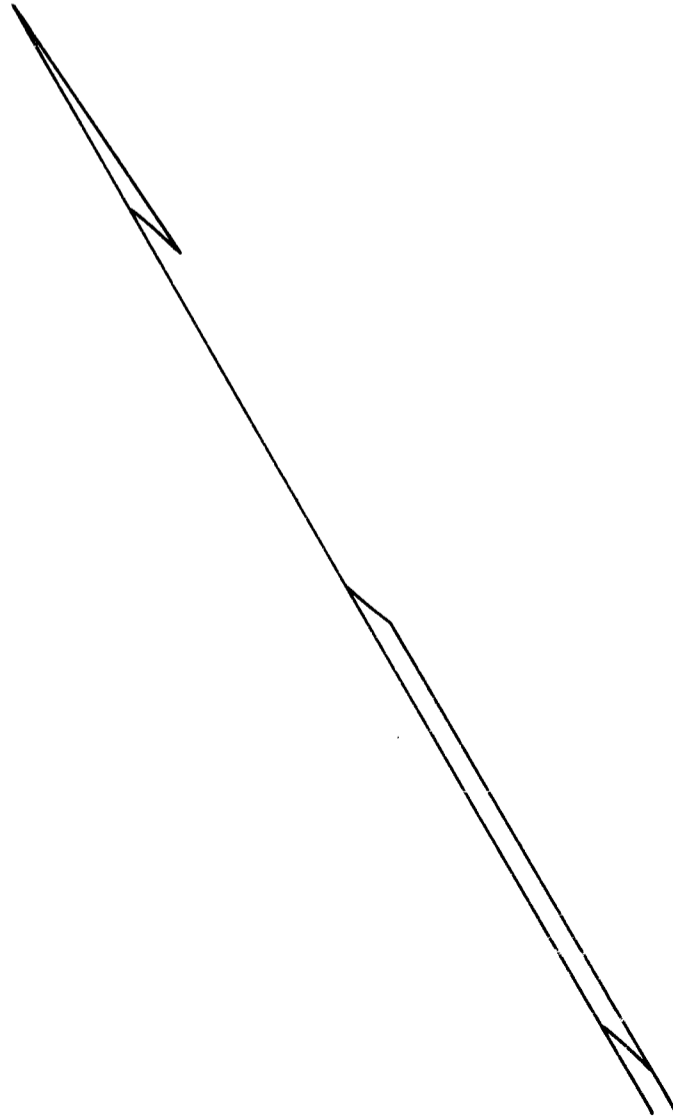
358.8

371.8

385.7

BEAUMONT AVENUE

AVENUE



I.P.

I.P. in Road

N 25° 42' W 145'

N 25° 42' W 100'

N 15° 48' W 100.8'

S 74° 12' W 330'

N 74° 12' E 338.6

N 74° 12' E 364.4

N 74° 12' E 371.8

N 15° 48' W 385.7

N 22° 31' W 98.5

S 22° 24' E 521.305

S 22° 24' E 521.305

S 22° 24' E 521.305

S 22° 24' E 521.305

S 22° 24' E 521.305

S 22° 24' E 521.305

S 22° 24' E 521.305

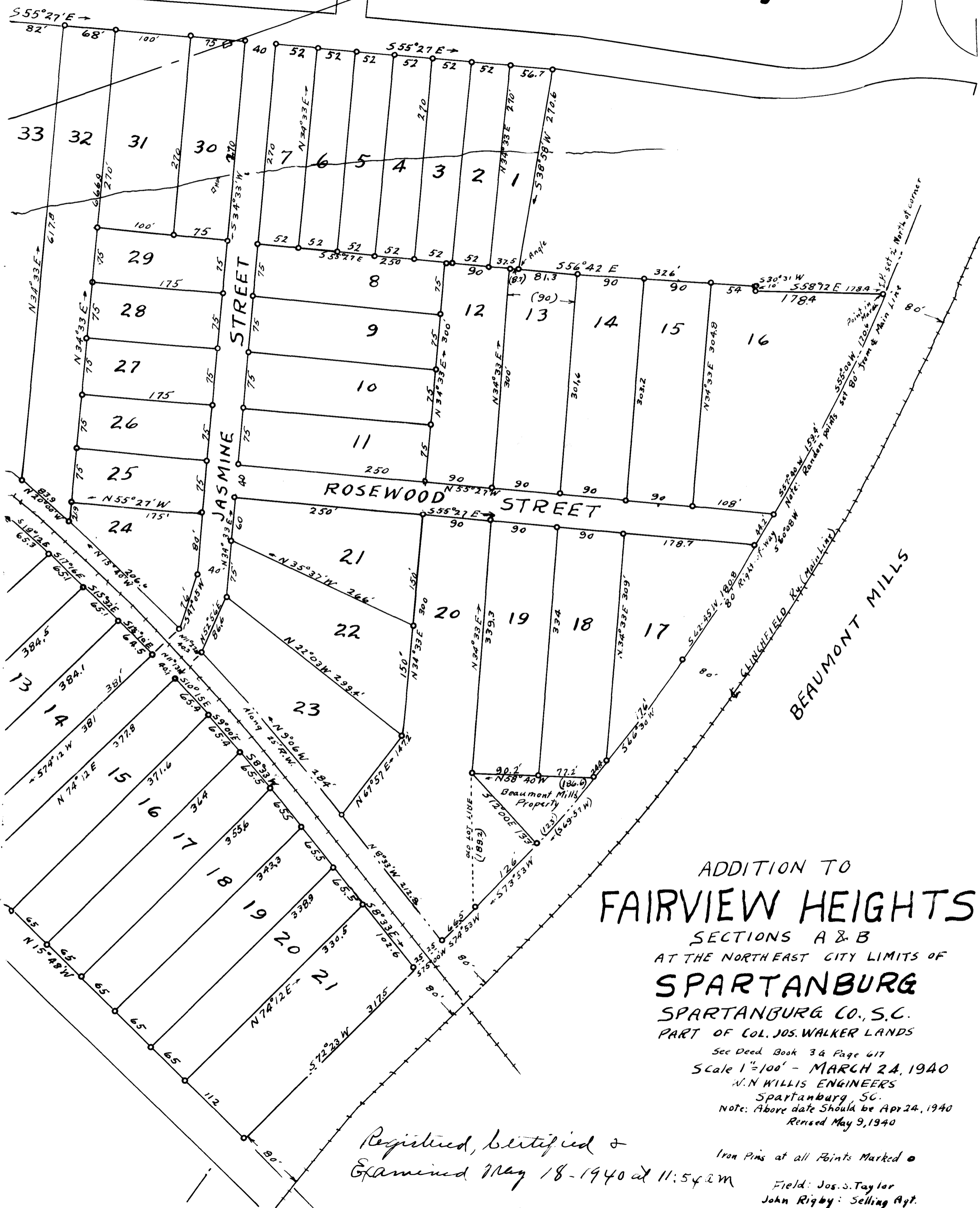
S 22° 24' E 521.305

S 22° 24' E 521.305

S 22° 24' E 521.305

HEIGHTS

EX PARTE  
Henry M. Cleveland  
Fairview Heights



ADDITION TO  
**FAIRVIEW HEIGHTS**  
 SECTIONS A & B  
 AT THE NORTHEAST CITY LIMITS OF  
**SPARTANBURG**  
 SPARTANBURG CO., S.C.  
 PART OF COL. JOS. WALKER LANDS

See Deed Book 34 Page 617  
 Scale 1"=100' - MARCH 24, 1940  
 W.N. WILLIS ENGINEERS  
 Spartanburg, S.C.  
 Note: Above date should be Apr 24, 1940  
 Revised May 9, 1940

Registered, Certified &  
 Examined May 18 - 1940 at 11:54 AM

Iron Pins at all Points Marked o  
 Field: Jos. S. Taylor  
 John Rigby: Selling Agt.