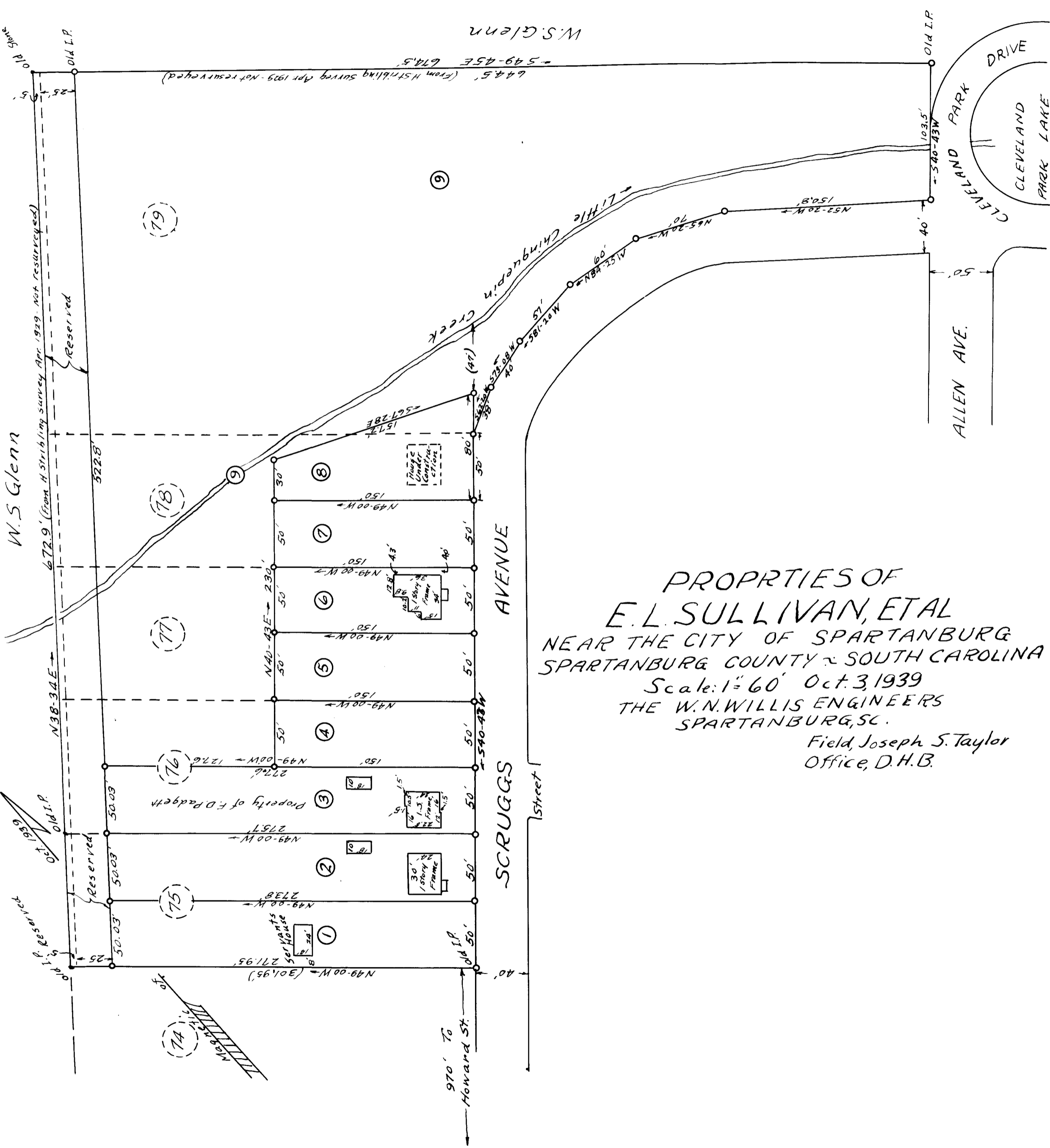


EX PARTE E.L. SULLIVAN, ET AL



PROPERTIES OF
 E.L. SULLIVAN, ET AL
 NEAR THE CITY OF SPARTANBURG
 SPARTANBURG COUNTY - SOUTH CAROLINA
 Scale: 1" = 60' Oct. 3, 1939
 THE W.N. WILLIS ENGINEERS
 SPARTANBURG, SC.
 Field, Joseph S. Taylor
 Office, D.H.B.

Deed Reference: 9L-57

Plat Reference: The above plat is a resub-division of lots 75, 76, 77, 78, and 79, as shown on a plat of "The Sub-division of the Mrs. E. F. Scruggs Property" by H. Stribling - dated April 5, 1929.

Note: All houses are shown to correct scale except house on lot #8
 All corner are marked by small steel pins.

Registered, certified & Examined May 22nd 1940 at 11:27 A.M.