

Ex Parte

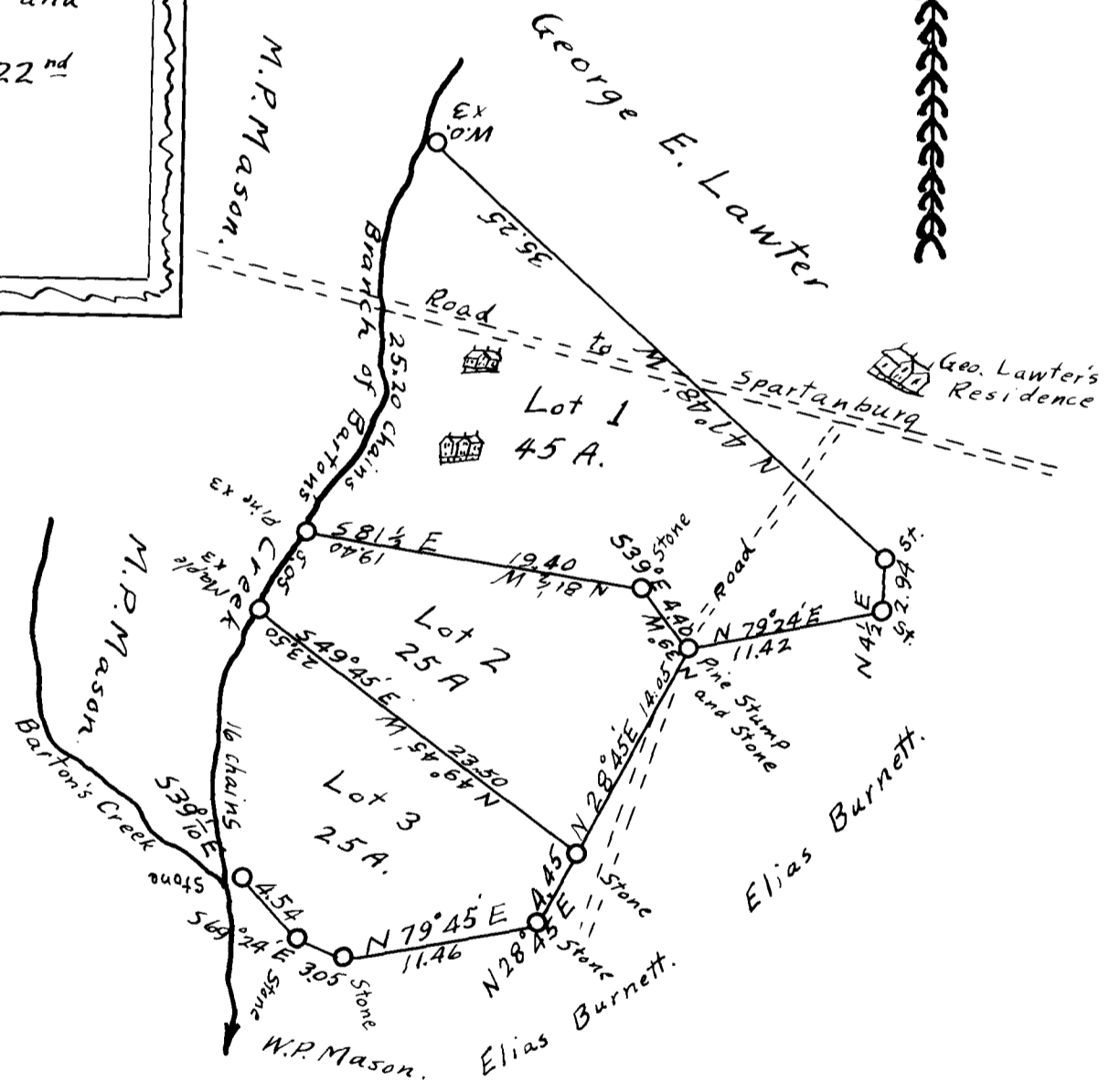
# W. S. Lawter Estate

Spartanburg Co.  
South Carolina

This Map shows  
Lots No's 1, 2 & 3, of the  
real estate of W.S. Lawter  
decd as resurveyed and  
divided by me Sept, 22<sup>nd</sup>  
1911.

T. E. Johnson,  
Surveyor.

Scale of 10 chains  
per inch



Registered, Certified & Examined May 22<sup>nd</sup> 1940 at 4:45 P.M.