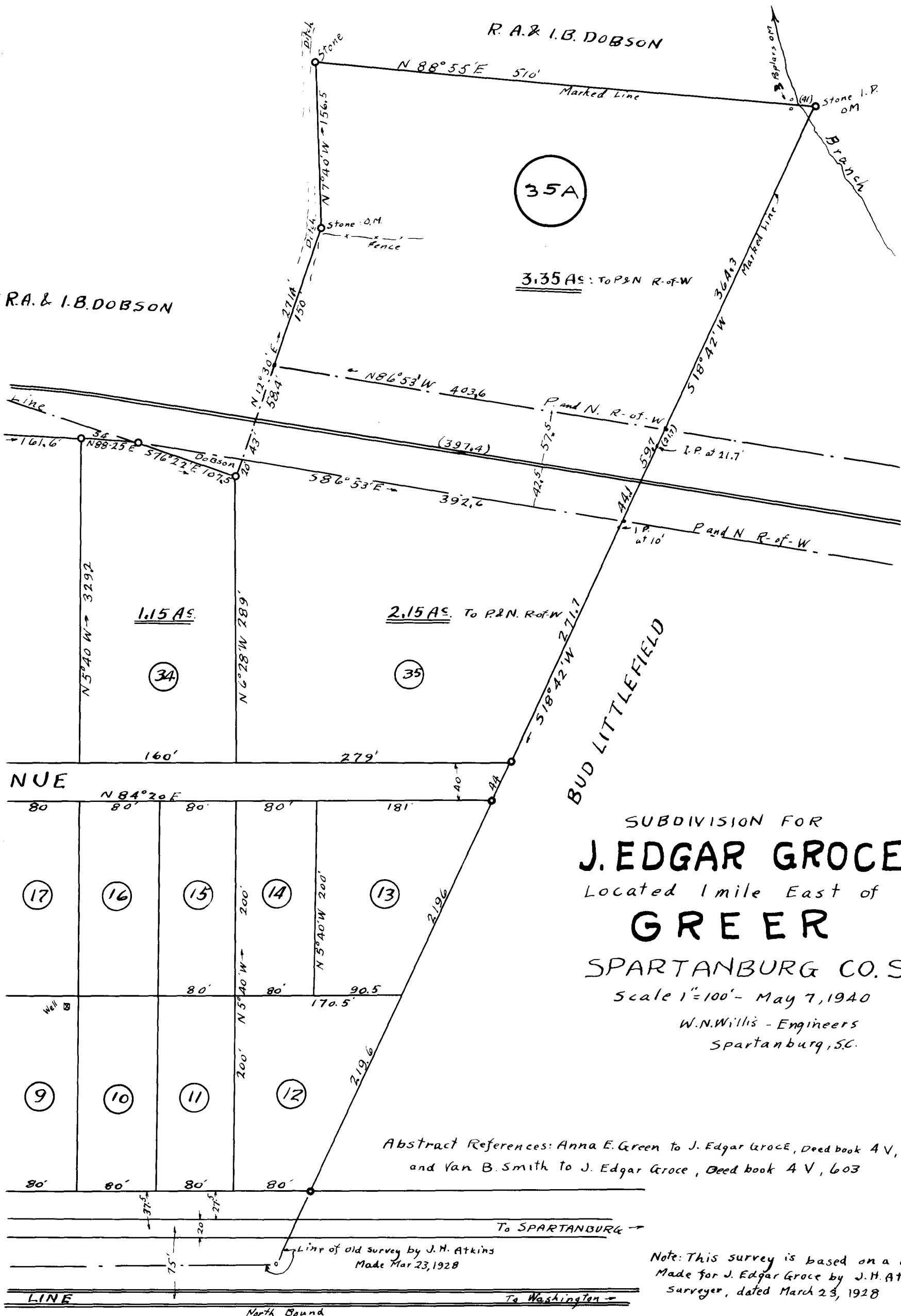


103

EX PARTE  
J. EDGAR GROCE





SUBDIVISION FOR  
**J. EDGAR GROCE**  
 Located 1 mile East of  
**GREER**  
 SPARTANBURG CO. S.C.  
 Scale 1"=100' - May 7, 1940  
 W.N. Willis - Engineers  
 Spartanburg, S.C.

Abstract References: Anna E. Green to J. Edgar Groce, Deed book 4 V, 589  
 and Van B. Smith to J. Edgar Groce, Deed book 4 V, 603

Note: This survey is based on a Plat  
 Made for J. Edgar Groce by J.H. Atkins,  
 Surveyor, dated March 23, 1928

Iron pins set at main corners of lots.  
 Field: Jas. S. Taylor

Registered, certified & Examined May 27<sup>th</sup> 1940 at 1:45, P.M.