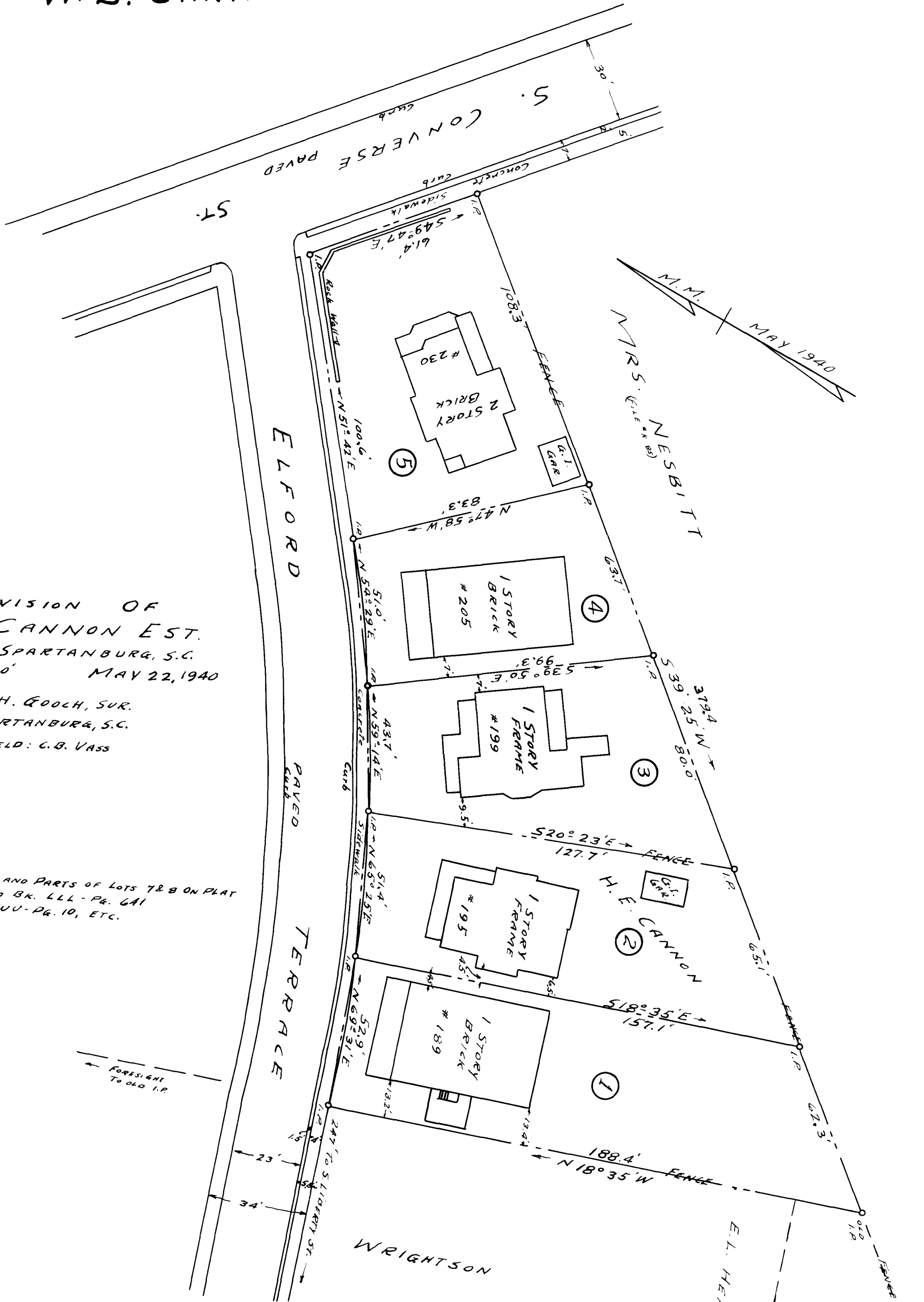


104

EX PARTE  
W. S. CANNON EST.



SUBDIVISION OF  
W. S. CANNON EST.  
CITY OF SPARTANBURG, S.C.  
SCALE: 1"=30' MAY 22, 1940

J. H. GOOLCH, SUR.  
SPARTANBURG, S.C.  
FIELD: C. B. VASS

COMPOSED OF LOT 9 AND PARTS OF LOTS 7 & 8 ON PLAT  
RECORDED IN DEED BK. LLL - PG. 641  
SEE APP. PG. 87, UVU - PG. 10, ETC.

Registered, Certified & Examined May 27<sup>th</sup> 1940 at 3:55 P.M.