

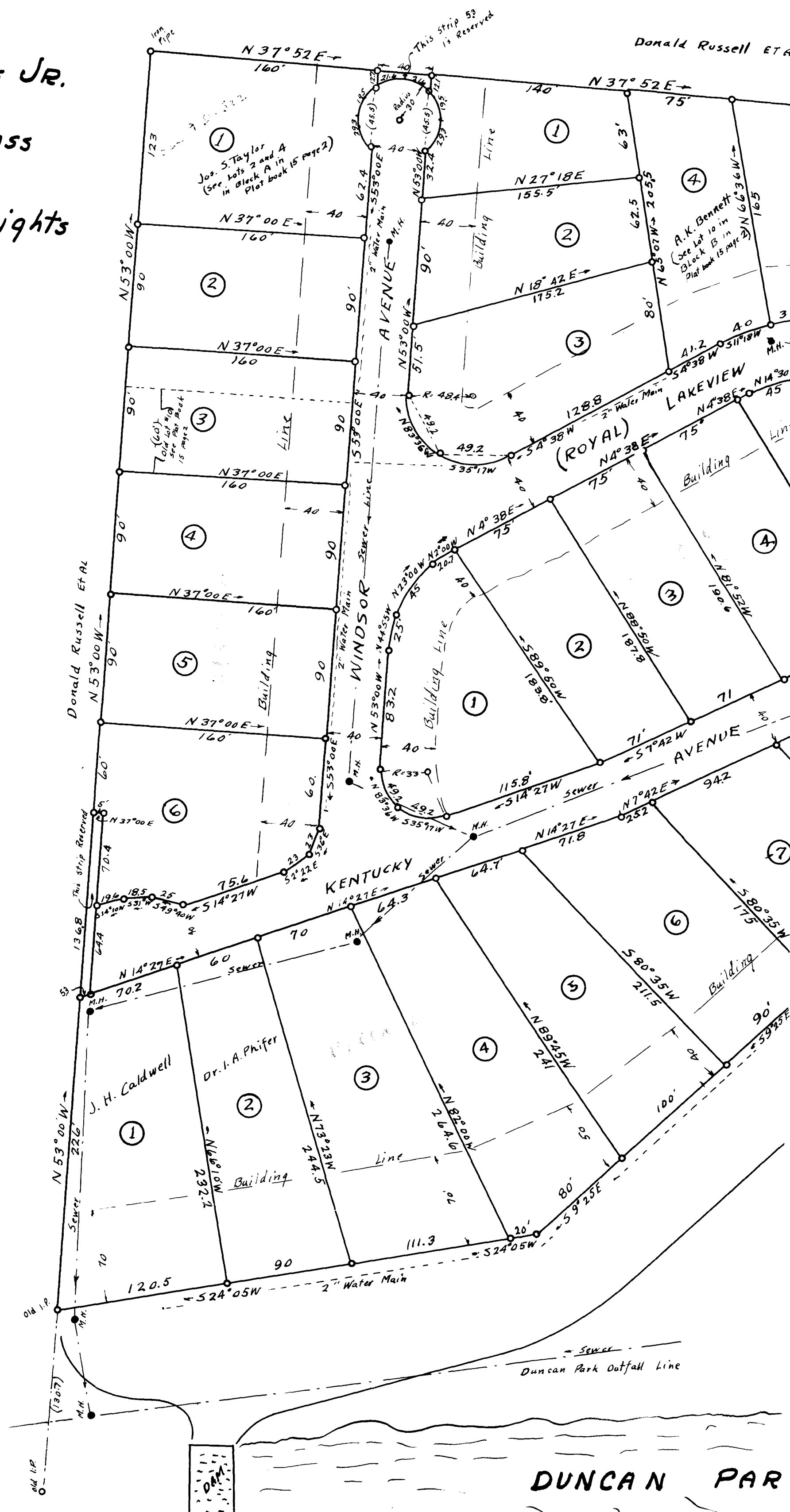
107

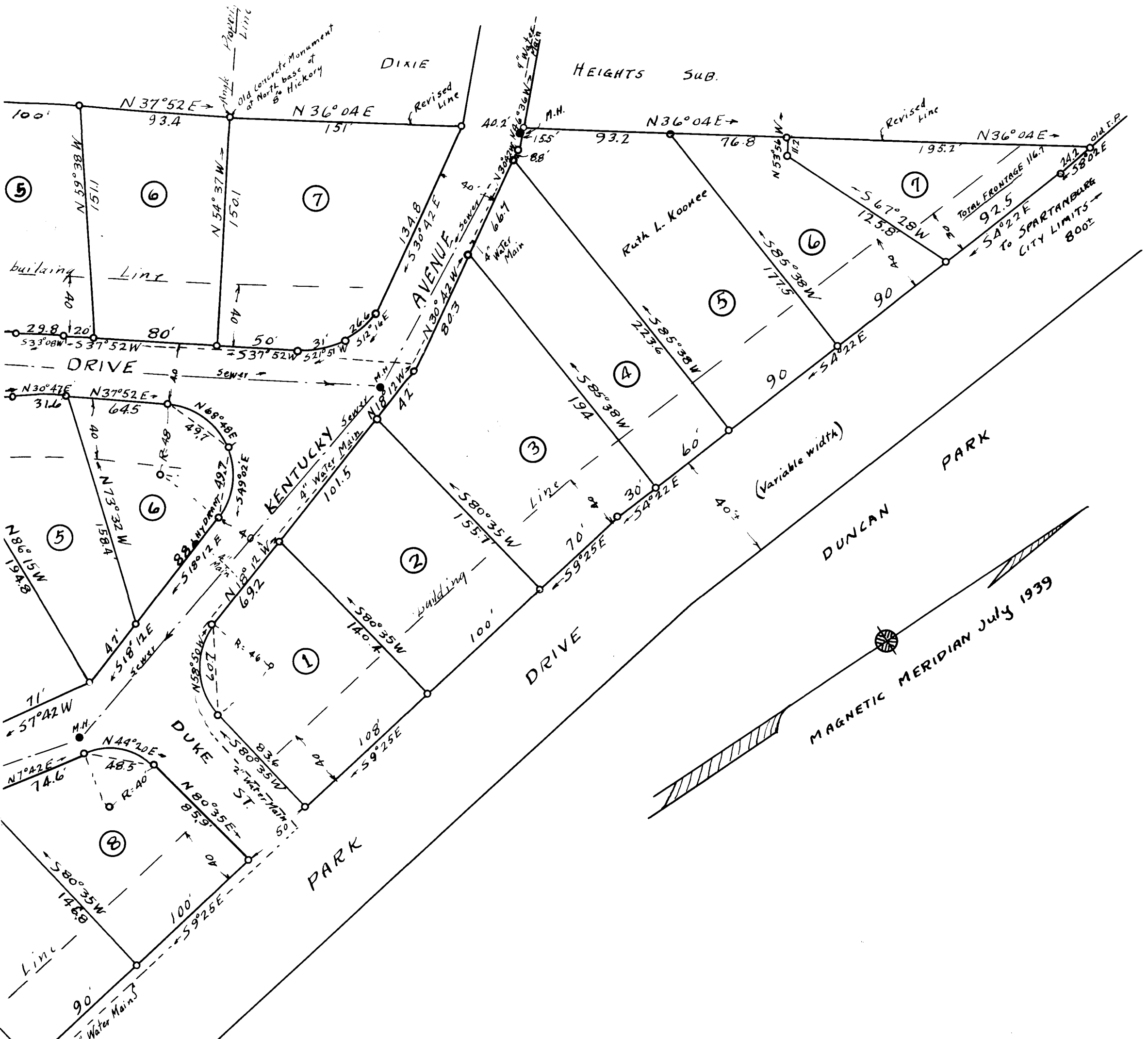
EX PARTE

HARRY E. DEPASS JR.
and
GEO. S. DEPASS

DUNCAN Park Heights

Donald Russell ET AL





DUNCAN PARK HEIGHTS

A RESIDENTIAL DEVELOPMENT ALONG THE WESTERN SHORE OF DUNCAN PARK LAKE NEAR THE CITY OF SPARTANBURG

SPARTANBURG CO., SOUTH CAROLINA

SCALE: 1" = 60'

APRIL 6, 1940

W. N. WILLIS ENGINEERS
SPARTANBURG S.C.

Field: Jos. S. Taylor

HARRY E. JR. & GEO. S. DEPASS DEVELOPERS

NOTE: The Above Plat Represents a Revision of a former Plat of "Duncan Park Heights" dated Sept. 14, 1939 and Recorded in Plat book 15 page 2

Revised May 30, 1940 V13: Water Mains and Sewer Lines have been installed as hereon shown.
W.N. Willis Engrs.

Iron pins set at all corners

Records: 9-K, 260: 9-C, 343

DUNCAN PARK LAKE Registered, Certified & Examined May 31, 1940 at 10:24 A.M.