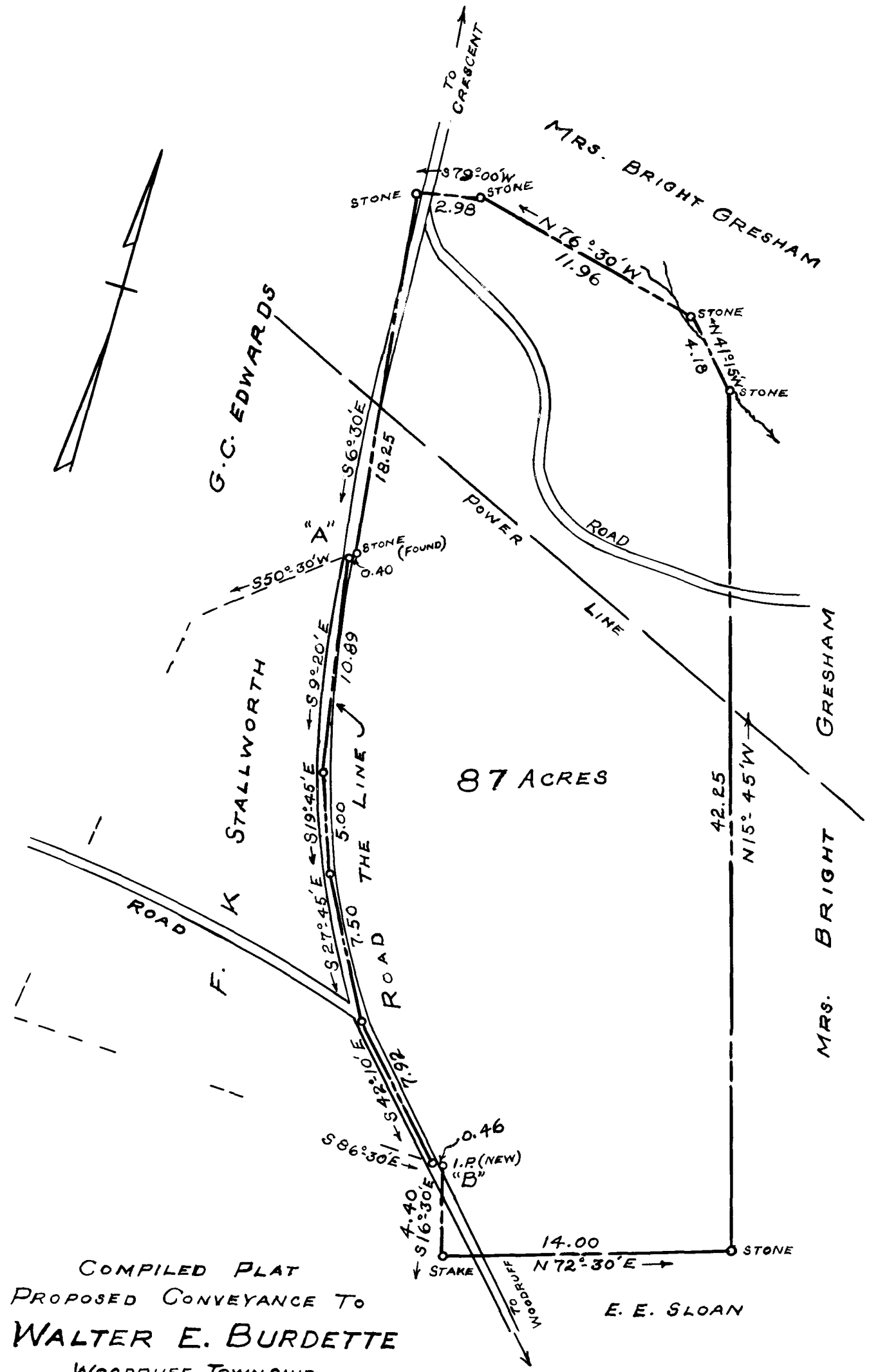


EX PARTE
WALTER E. BURDETTE



COMPILED PLAT
 PROPOSED CONVEYANCE TO
WALTER E. BURDETTE
 WOODRUFF TOWNSHIP
 SPARTANBURG COUNTY, S.C.
 SCALE: 1" = 6 CHAINS MAY 15, 1940
 COMPILED FROM PLAT BY P. H. ANDERSON
 NOV. 1933. ROAD LINE (A TO B) SUR-
 VEYED BY US MAY 15, 1940
 J. H. GOOCH, SUR.
 SPARTANBURG, S.C.
 FIELD: C. B. VA 38

Registered, Certified + Examined July 3rd 1940 at 3:42 P.M.