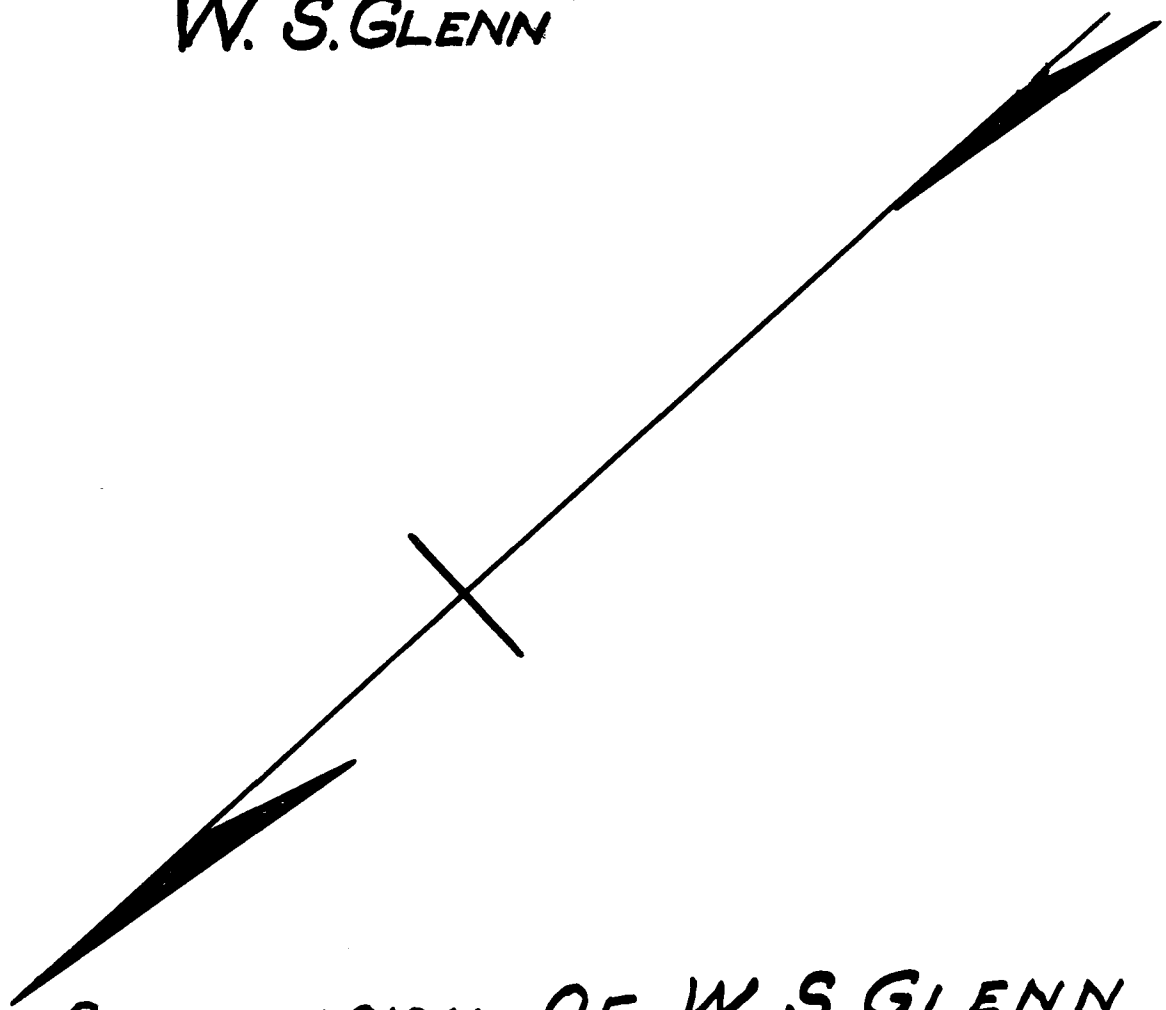


EX PARTE
W. S. GLENN



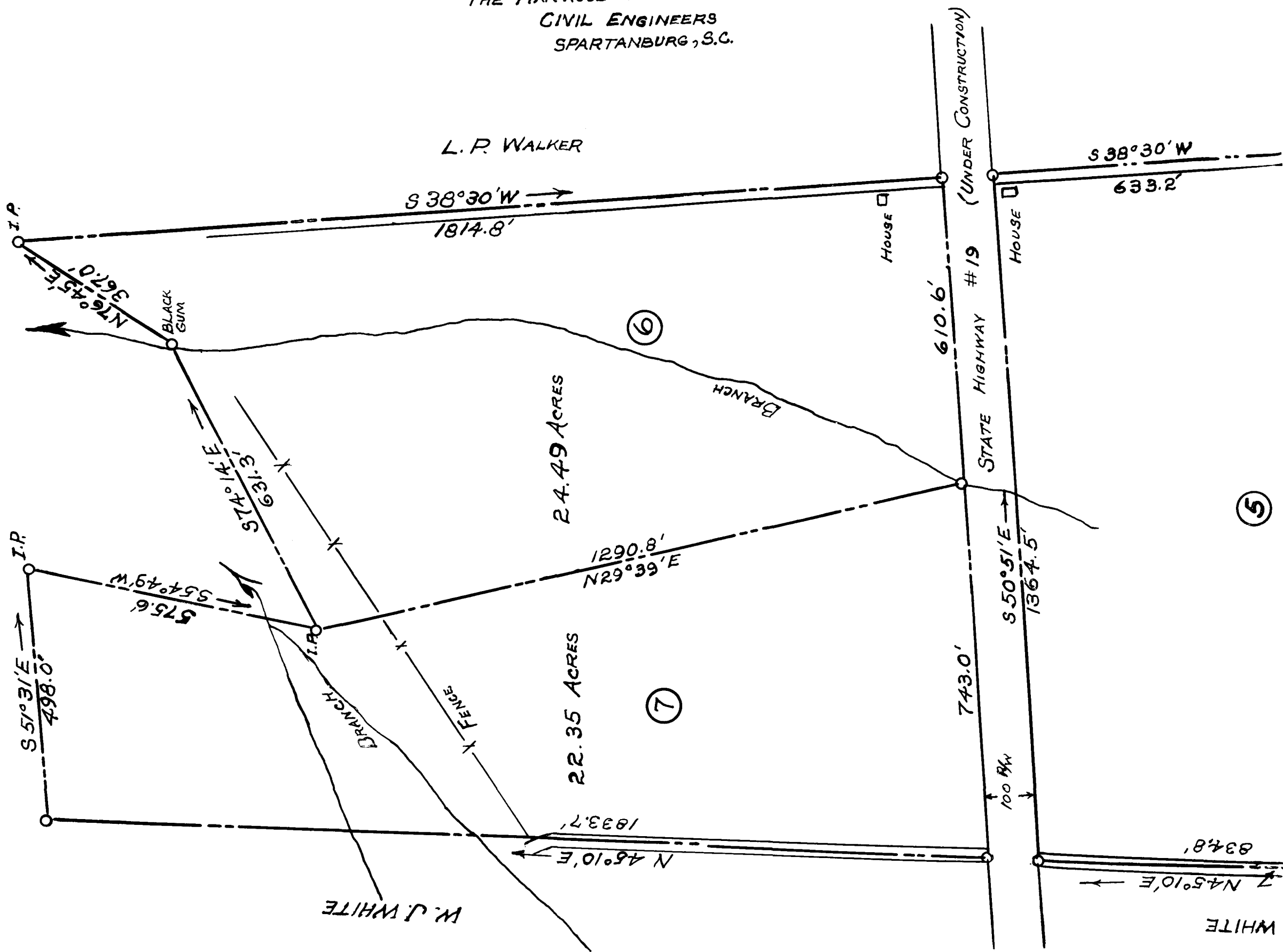
SUBDIVISION OF W. S. GLENN PROPERTY
FOR BANKRUPT SALE
LOCATED ABOUT 2 MILES NORTH OF THE CITY
OF SPARTANBURG, S. C.

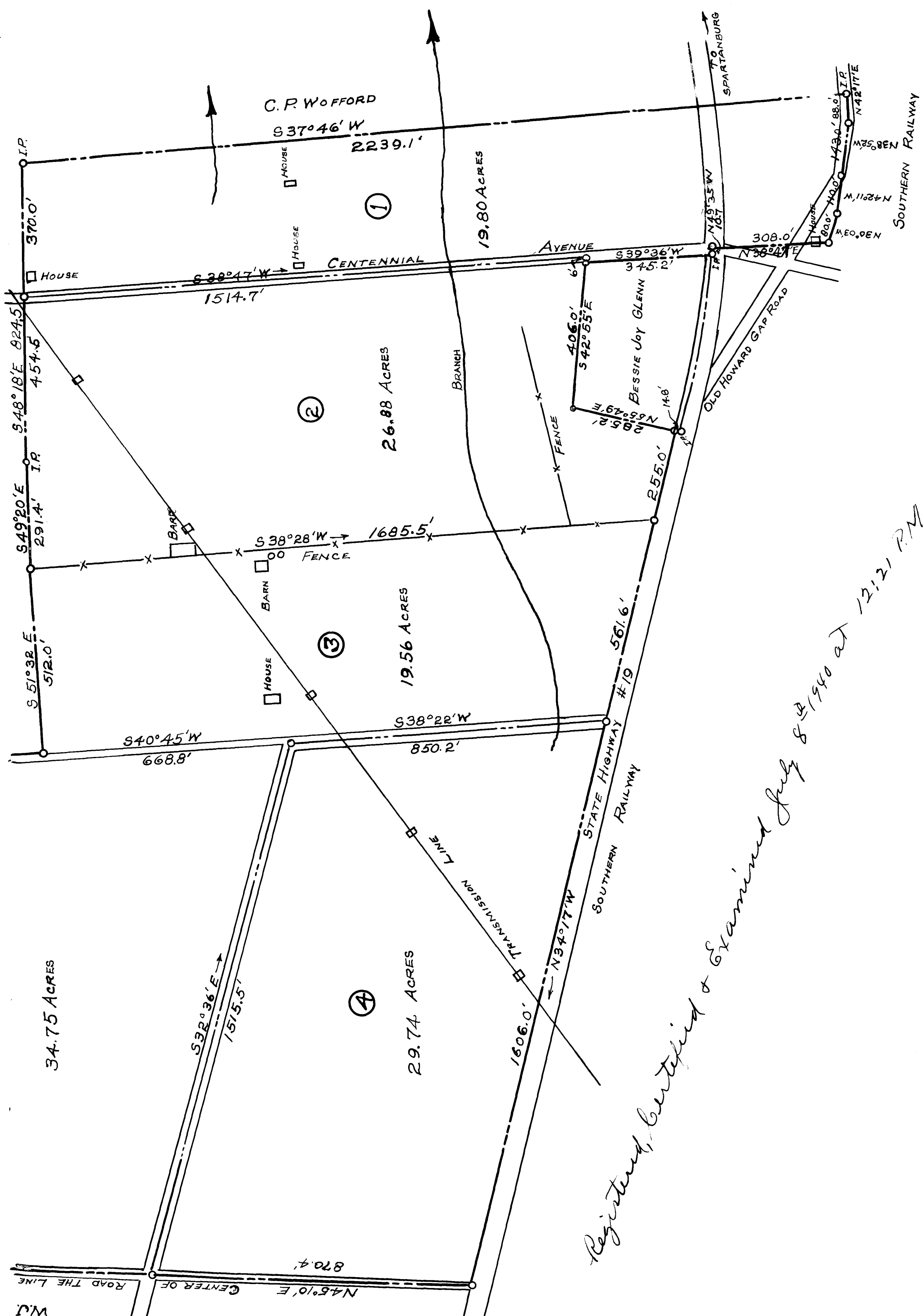
SCALE 1" = 200'

APRIL 20, 1934

L. P. WALKER

THE HARWOOD BEEBE COMPANY
CIVIL ENGINEERS
SPARTANBURG, S. C.





Registered, Certified & Examined July 8th 1940 at 12:21 P.M.