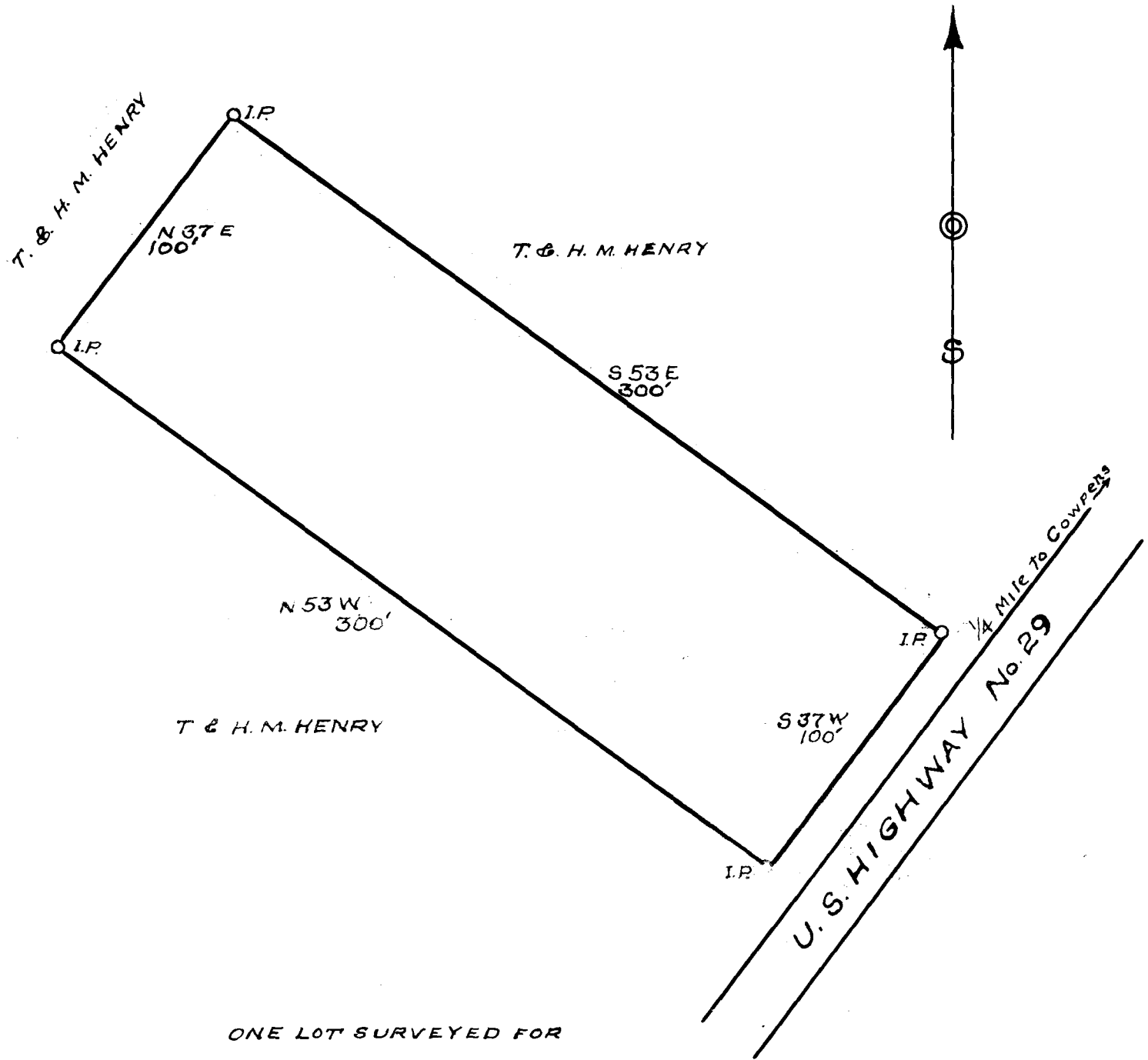


EX PARTE
T. & H. M. HENRY



ONE LOT SURVEYED FOR
T. & H. M. HENRY
 LYING NEAR COWPENS IN
 SPARTANBURG COUNTY
 SOUTH CAROLINA
 SCALE: 2 in. = 100'
 JUNE 5, 1940

Thos. T. Linder
 Reg. Sur.

Registered, certified & Examined July 16th 1940 at 4:21 P.M.