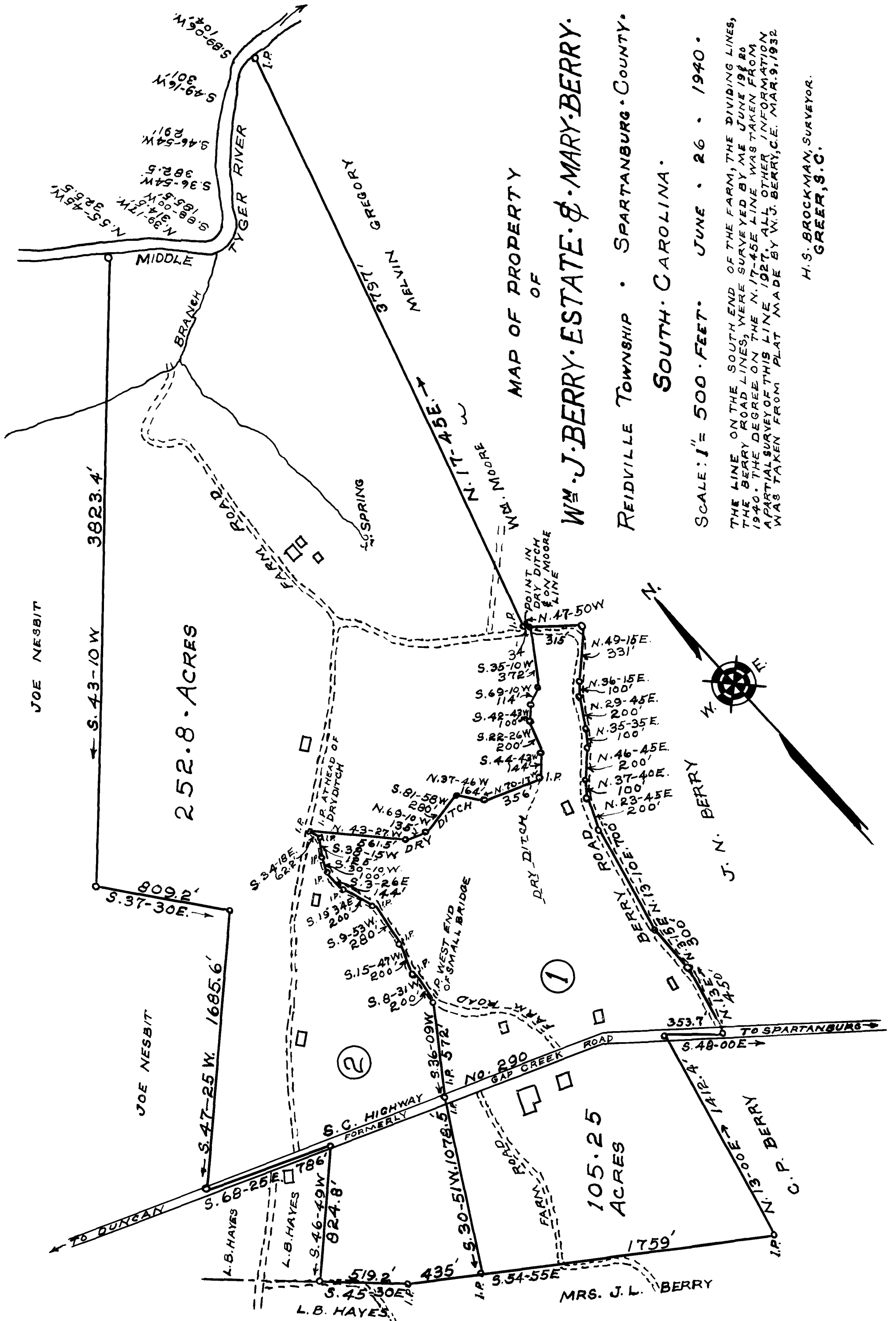


EX PARTE WM. J. BERRY ESTATE & MARY BERRY



SCALE: 1" = 500 FEET. JUNE 26 1940.

THE LINE ON THE SOUTH END OF THE FARM, THE DIVIDING LINES, THE BERRY ROAD LINES, WERE SURVEYED BY ME JUNE 1940. THE DEGREE ON THE N. 17-45 E LINE WAS TAKEN FROM A PARTIAL SURVEY OF THIS LINE 1927. ALL OTHER INFORMATION WAS TAKEN FROM PLAT MADE BY W. J. BERRY, C.E. MAR. 9, 1932.

H. S. BROCKMAN, SURVEYOR.
GREER, S. C.

Registered, certified & Examined July 24th 1940 at 1:30 P.M.