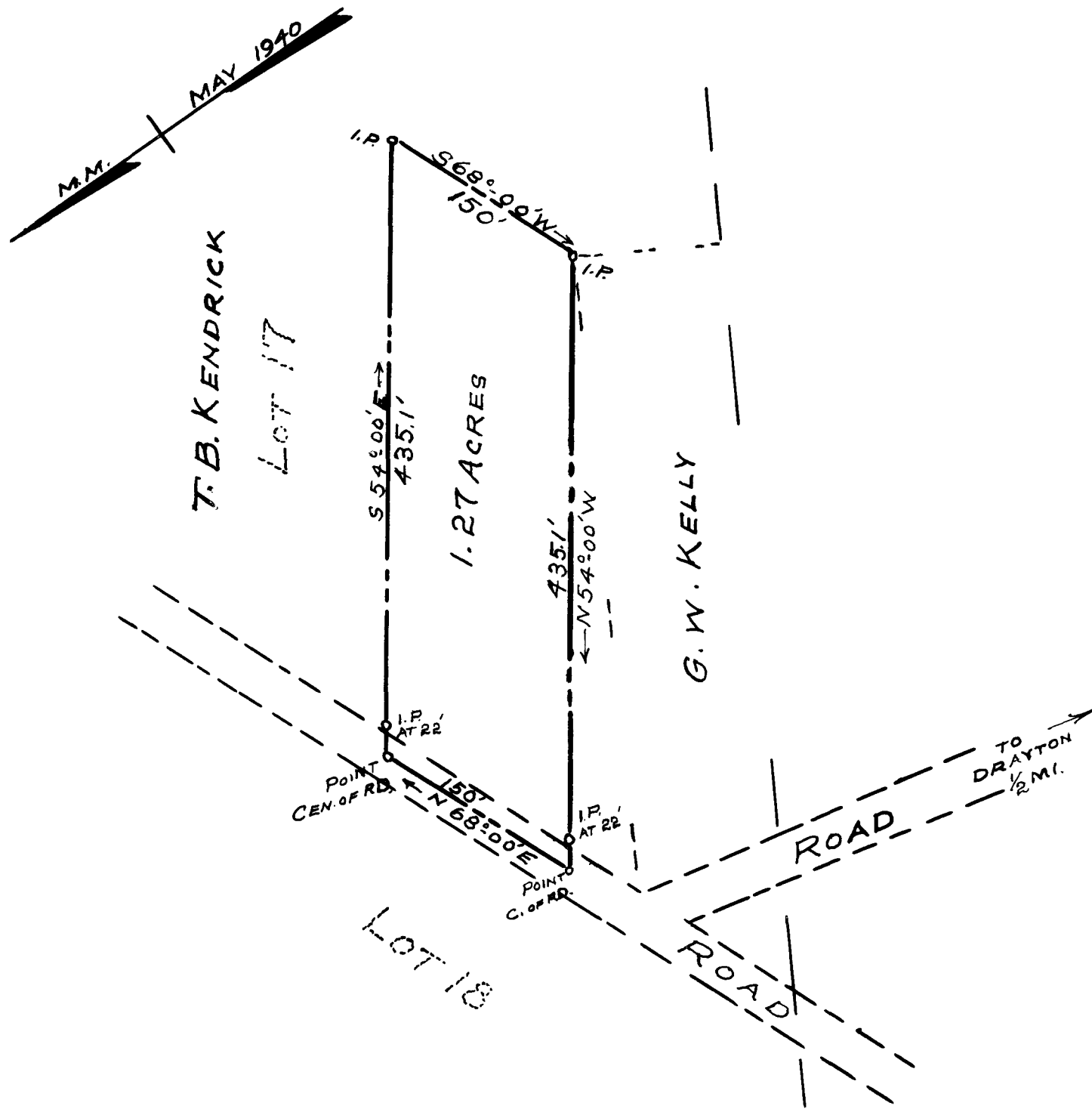


EX PARTE R. S. MCGAHA



PROPERTY BEING CONVEYED BY
T. B. KENDRICK
TO

R. S. MCGAHA

NEAR DRAYTON MILLS
SPARTANBURG COUNTY, S.C.

SCALE: 1"=100' MAY 15, 1940

BEING PART OF LOT 17 OF ARCHER LANDS
SEE PLAT BY W. N. WILLIS, JULY 1918

J. H. GOOCH, SUR.
SPARTANBURG, S.C.
FIELD: C. B. VASS

Registered, certified & Examined August 5th 1940 at 11:37 a.m.