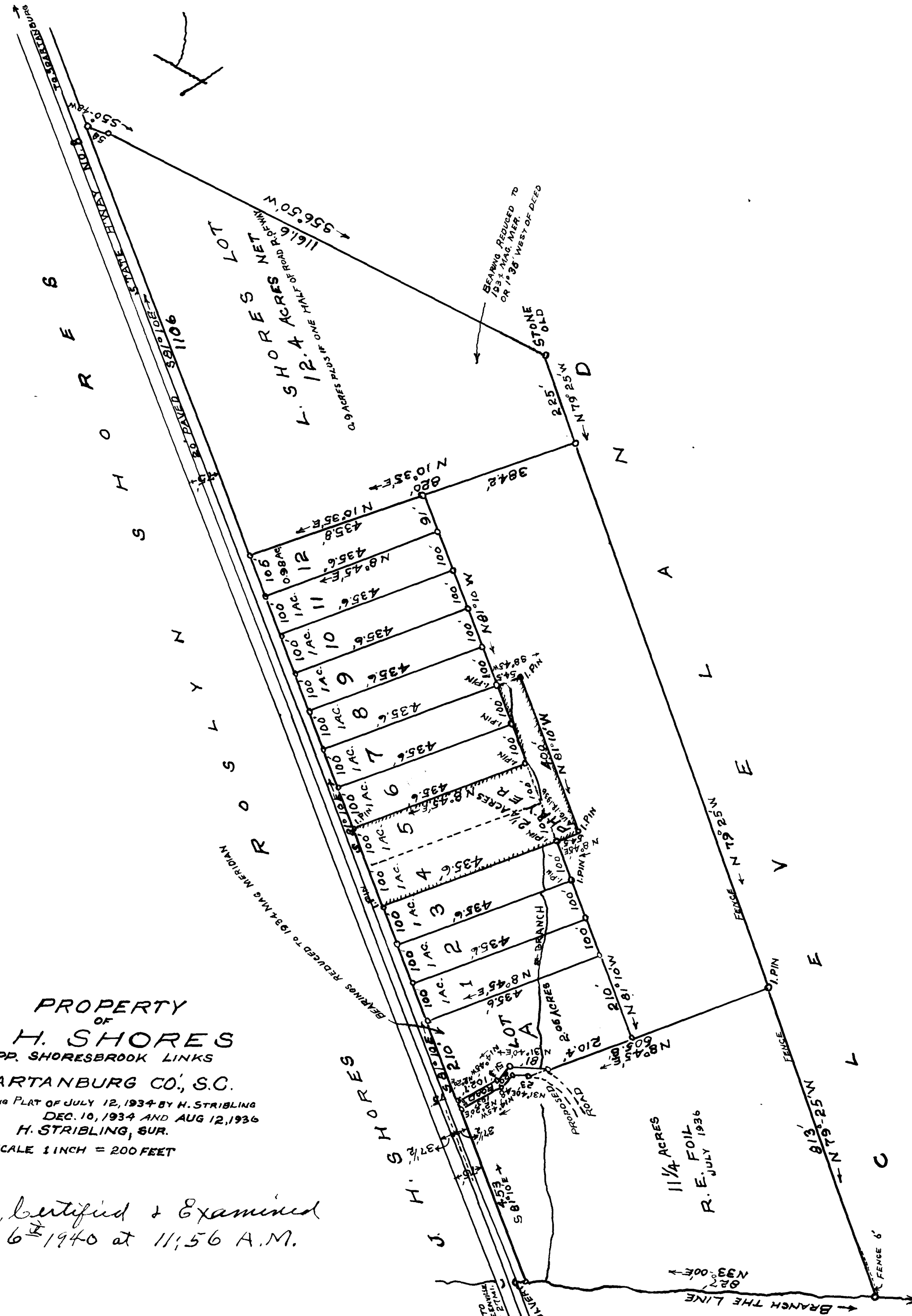


EX PARTE J. H. SHORES

NOTE: BEARINGS ARE REDUCED TO 1934 MERIDIAN
 3 MI. TO SHORES BROOK
 58° 50' 48" N



PROPERTY OF
J. H. SHORES
 OPP. SHORES BROOK LINKS
 SPARTANBURG CO., S.C.

SUPERSEDING PLAT OF JULY 12, 1934 BY H. STRIBLING
 DEC. 10, 1934 AND AUG 12, 1936
 H. STRIBLING, SUR.

SCALE 1 INCH = 200 FEET

Registered, Certified & Examined
 August 6th 1940 at 11:56 A.M.