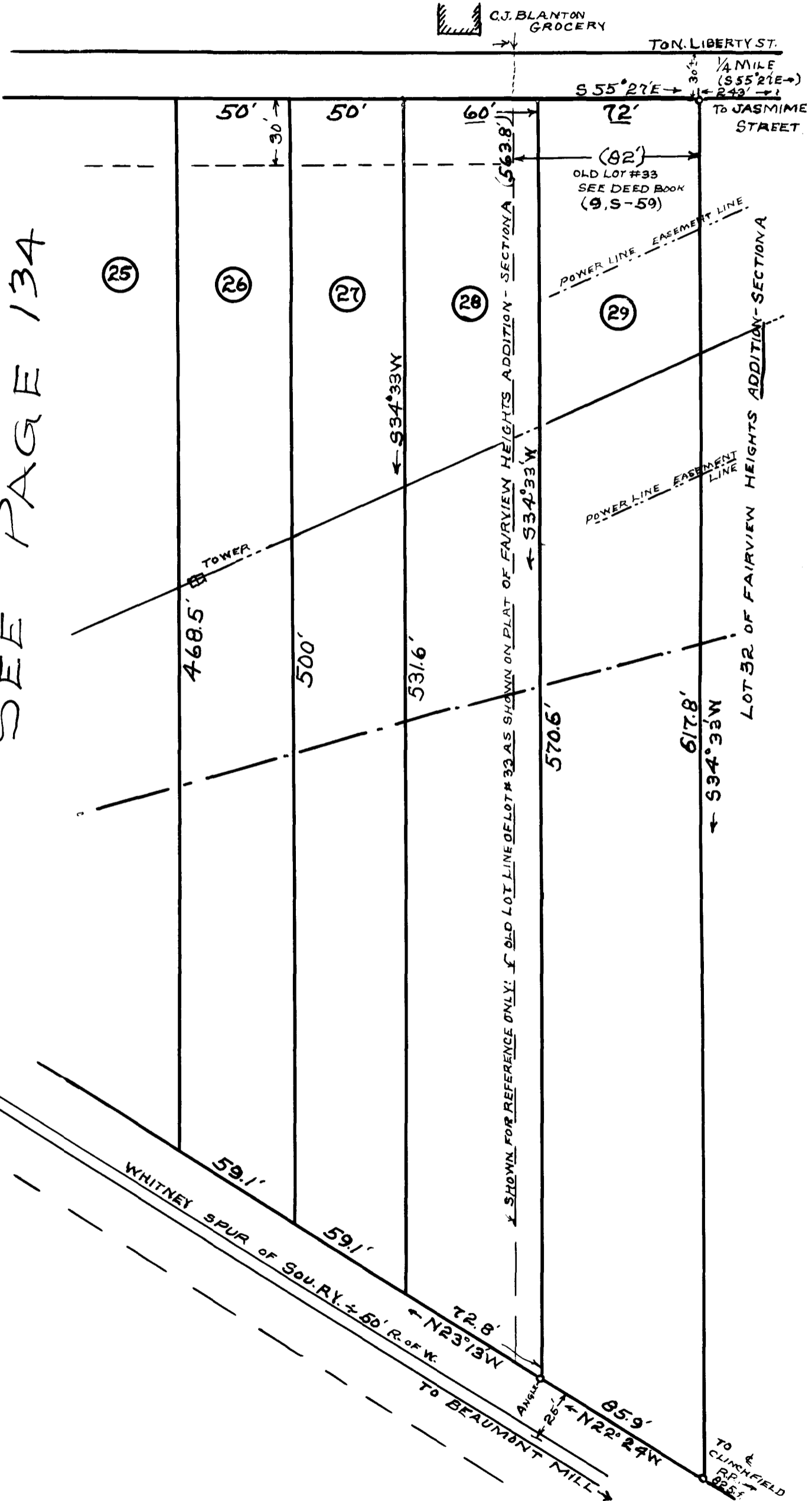


SEE PAGE 134



C.J. BLANTON GROCERY

TON. LIBERTY ST.  
1/4 MILE  
(S55°27'E →)  
← 242' →  
TO JASMINE STREET

(82')  
OLD LOT #33  
SEE DEED BOOK  
(9, S-59)

POWER LINE EASEMENT LINE

POWER LINE EASEMENT LINE

LOT 32 OF FAIRVIEW HEIGHTS ADDITION - SECTION A

WHITNEY SPUR OF SOU. RY. ± 60' R. OF W.  
← N23°13'W

TO BEAUMONT MILL →  
← N22°24'W

TO CLINCHFIELD R.R. →  
← 682.5'

SHOWN FOR REFERENCE ONLY: OLD LOT LINE OF LOT #33 AS SHOWN ON PLAT OF FAIRVIEW HEIGHTS ADDITION - SECTION A (563.8')