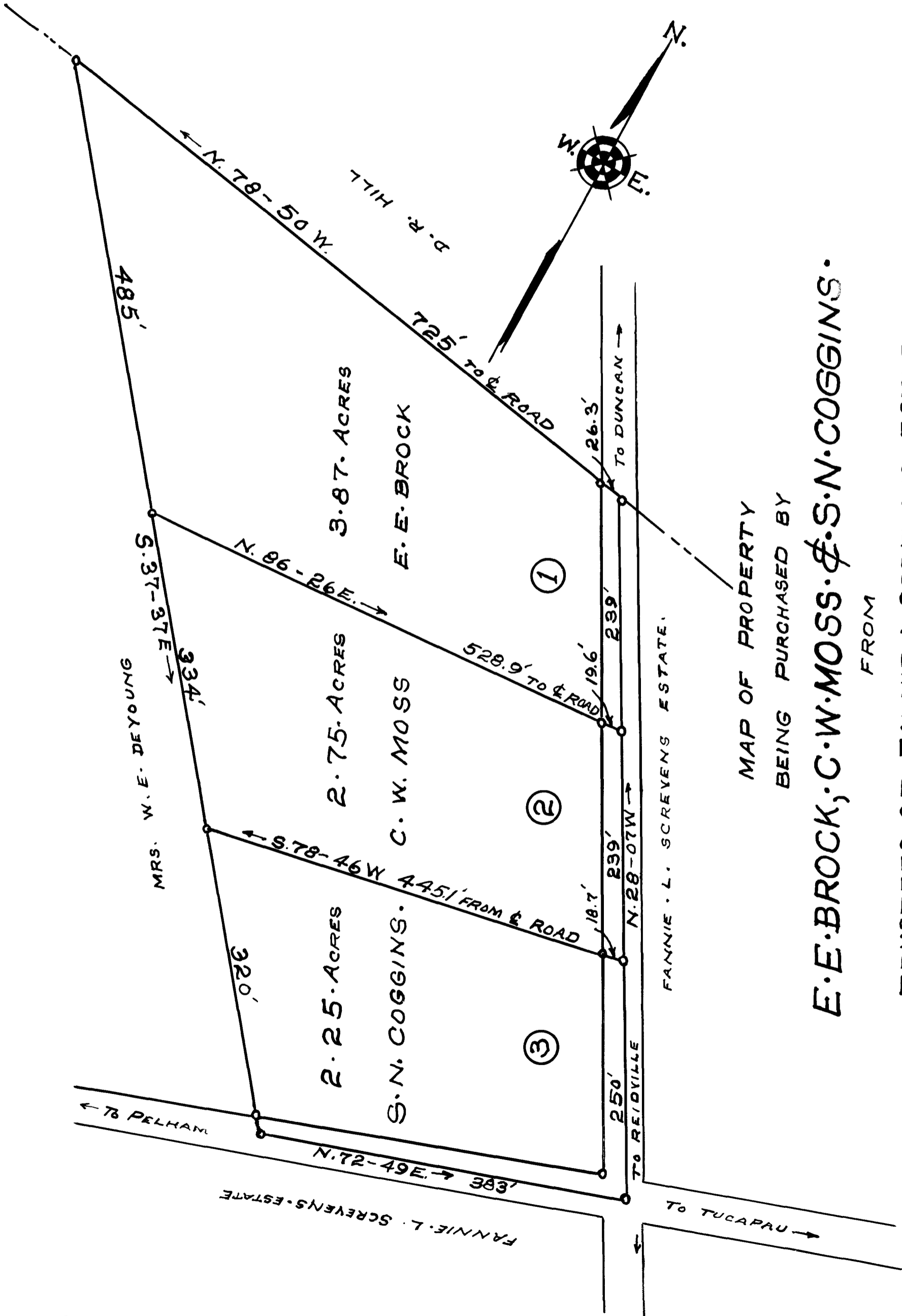


EX PARTE

E. E. BROCK, C. W. MOSS, & S. N. COGGINS



MAP OF PROPERTY
BEING PURCHASED BY
FROM

E. E. BROCK, C. W. MOSS, & S. N. COGGINS.

TRUSTEES OF FANNIE L. SCREVENS ESTATE.

REIDVILLE TOWNSHIP SPARTANBURG COUNTY.

SOUTH CAROLINA.

SCALE: 1" = 100 FEET. JULY 30 1940.

SURVEYED JULY 27 1940

H. S. BROCKMAN, SURVEYOR
GREER, S. C.

I. P. AT EACH CORNER

Registered, Certified & Examined August 9th 1940 at 4:28 P.M.