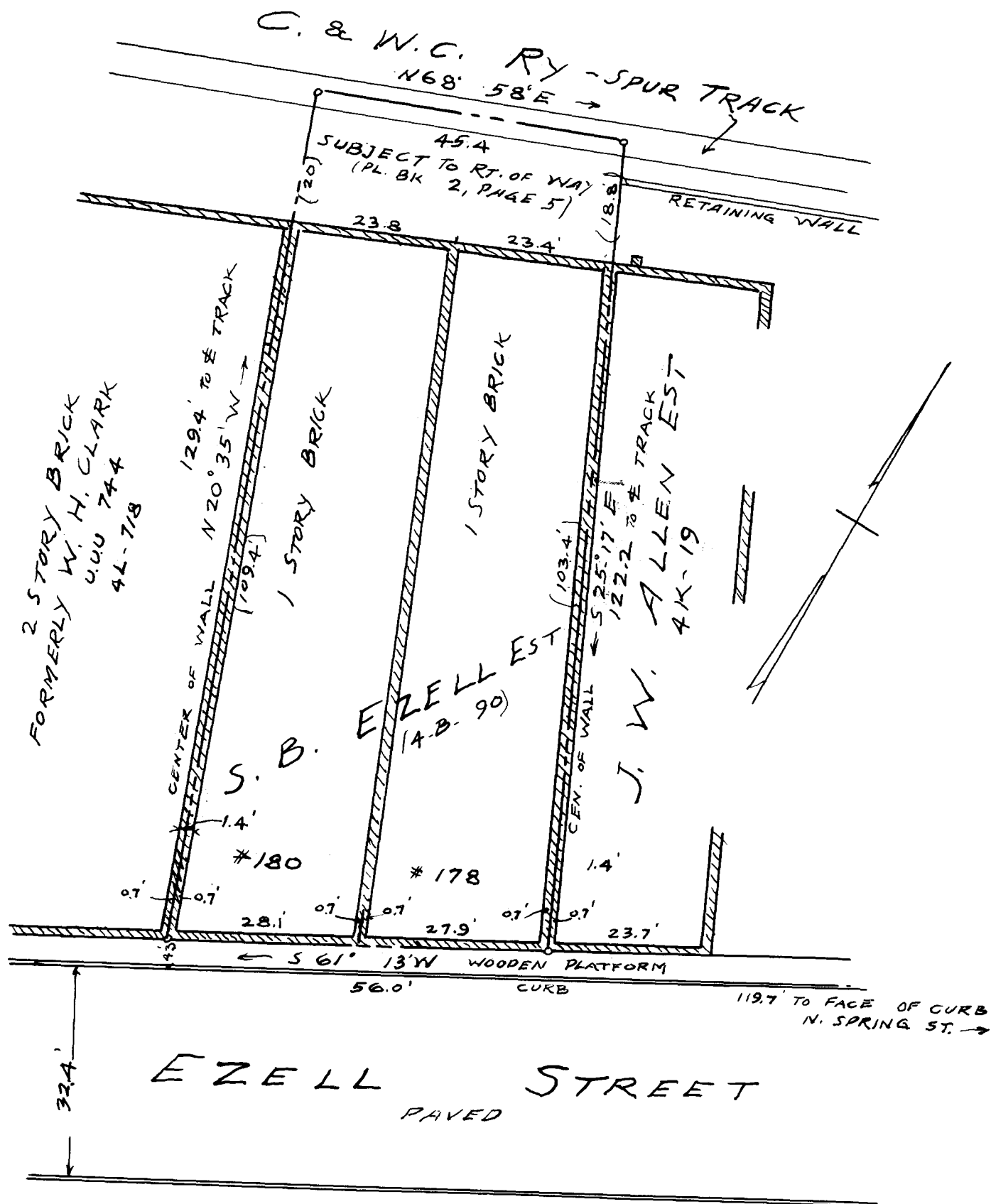


150

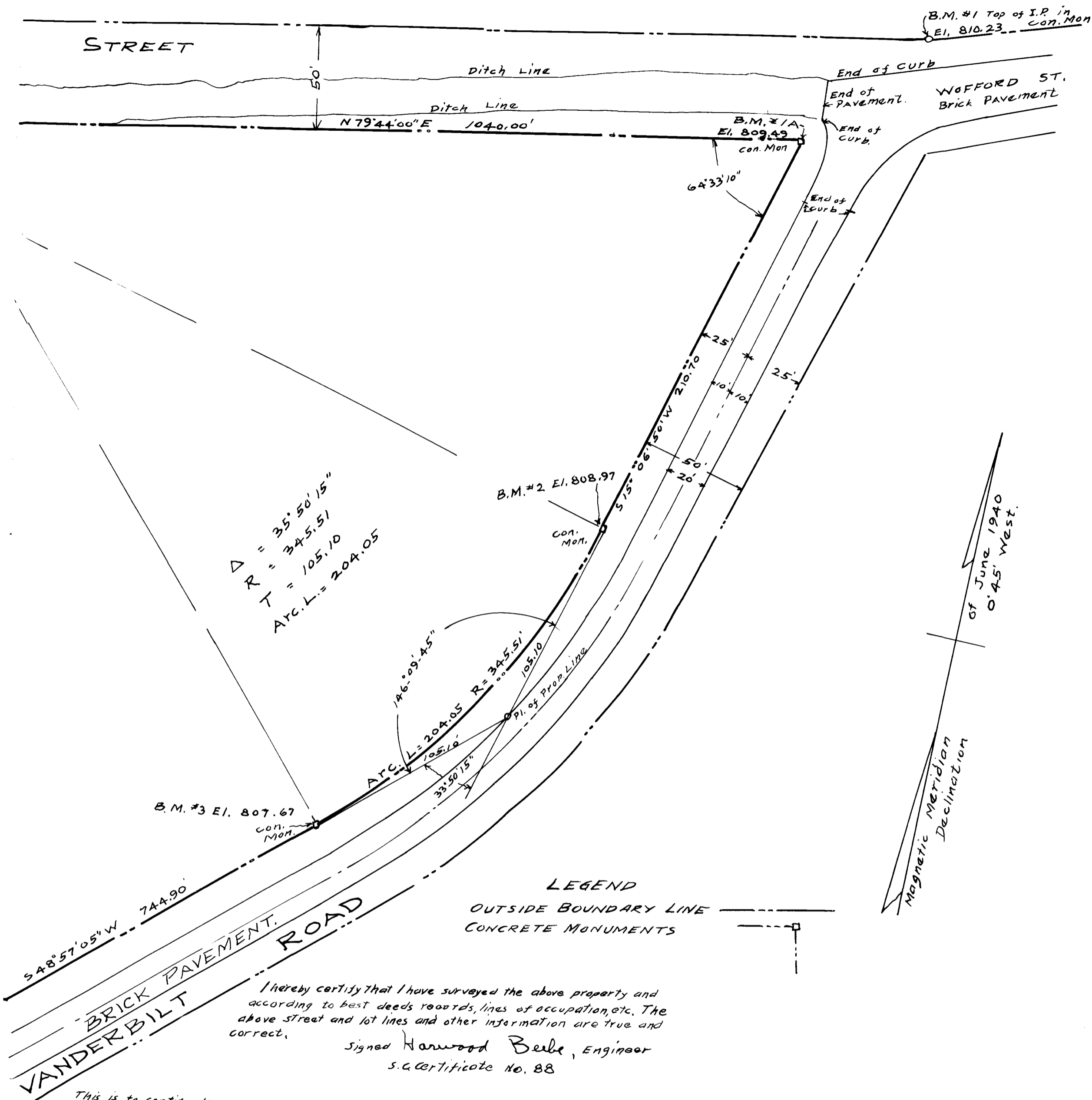
EX PARTE
S. B. EZELL ESTATE



PROPERTY OF
S. B. EZELL EST.
CITY OF SPARTANBURG, S.C.
SCALE: 1"=20' SEPT. 12, 1940

J. M. GOOCH, SUR.
SPARTANBURG, S.C.

Registered, certified & Examined Sept. 26, 1940 at 10:05 A.M.



I hereby certify that I have surveyed the above property and according to best deeds records, lines of occupation, etc. The above street and lot lines and other information are true and correct.

Signed Harwood Beebe, Engineer
S.C. Certificate No. 88

This is to certify that there is no full time salaried engineer for the City There are no officially established grades for the unimproved streets shown and the true street lines are as shown hereon

Signed J.E. DEASON
by E.C. BELL
Supt of street Dept.
City of Spartanburg, S.C.

Scale: 1" = 40'

PROPERTY LINE MAP

PROJECT S. C. 3-2

FOR THE HOUSING AUTHORITY

OF THE CITY OF SPARTANBURG, S. C.

UNDER LOAN CONTRACT WITH

UNITED STATES HOUSING AUTHORITY

DRAWN BY HARWOOD BEEBE, ENGINEER SHEET No. X

SPARTANBURG, S.C.

CHECKED BY Date Drawn July 15, 1940

Date Revised

APPROVED Wallace D. Duffe, Chairman HOUSING AUTHORITY OF SPARTANBURG, S.C. I

Registered, Certified & Examined Oct. 2-1940 at 10:37 A.M.