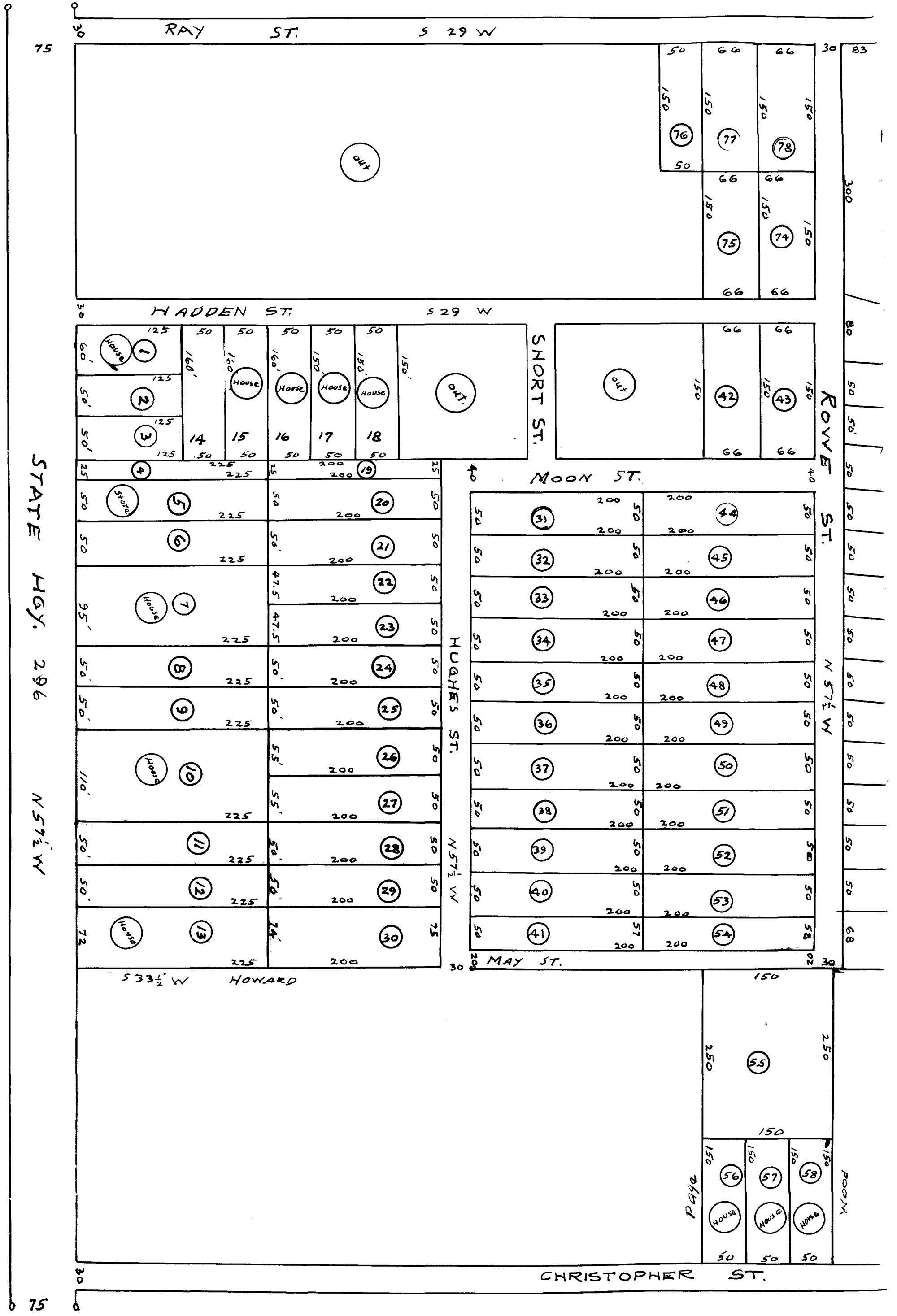


154

EX PARTE  
JOE H. HUGHES  
R.C. HUGHES

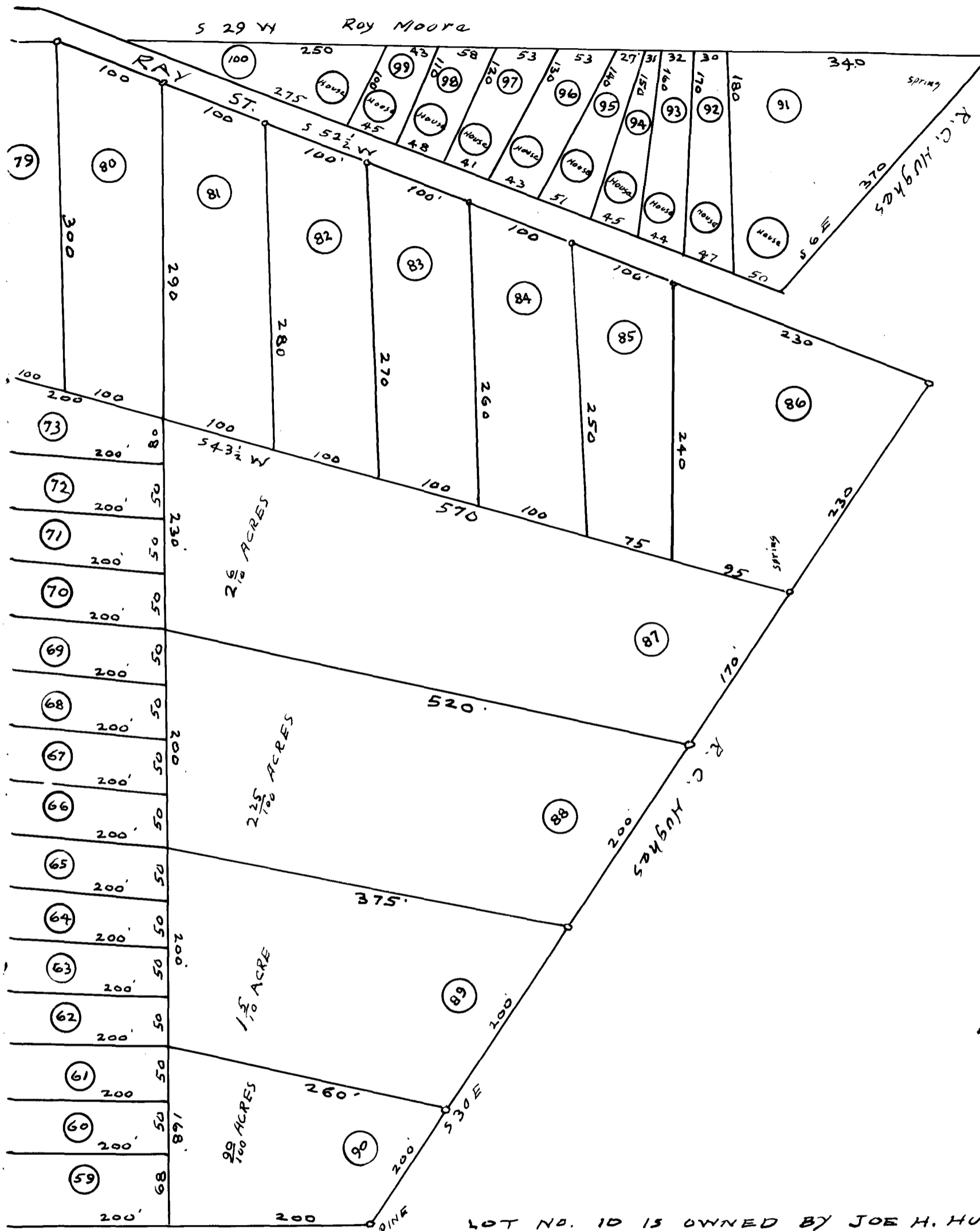


STATE HWY. 296 N 57 1/2 W

ROVER ST. N 57 1/2 W

ROOM

Room



LOT NO. 10 IS OWNED BY JOE H. HUGHES, ALL OTHER PROPERTY SHOWN BY THIS PLAT IS OWNED BY R.C. HUGHES. ALL OF SAID LAND IS BOUND BY AND ON STREETS AND ROADS AS SHOWN BY THIS PLAT AND IS JUST OUT SIDE THE CITY LIMITS OF PUNCAN IN SPARTANBURG COUNTY, S.C. ALL BEARINGS MAGNETIC. DIMENSIONS AND ACERAGE TO READ MORE OR LESS. 1" = 100 FT. APX. OCT. 1940.

S.C. MOON, C.S., HALL COUNTY, GA.

Registered, Certified & Examined Oct. 7-1940 at 9:18 a.m.