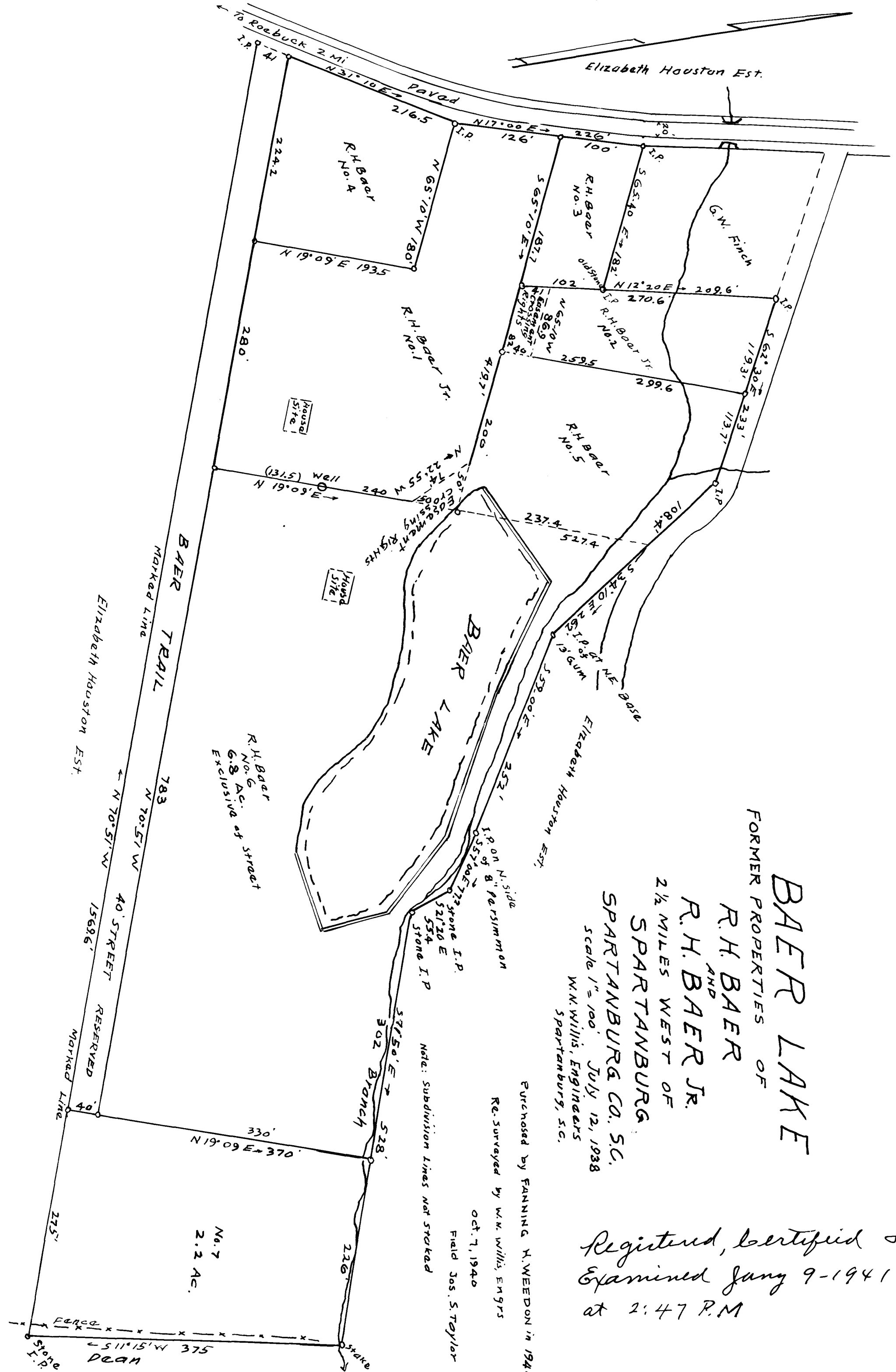


22

EX PARTE  
R. H. BAER SR. & R. H. BAER JR.  
FANNING H. WEEDEN



FORMER PROPERTIES OF  
**BAER LAKE**  
 R. H. BAER  
 AND  
 R. H. BAER JR.  
 2 1/2 MILES WEST OF  
 SPARTANBURG  
 SPARTANBURG CO. S.C.  
 Scale 1" = 100' July 12, 1938  
 W.N. Willis, Engineers  
 Spartanburg, S.C.

Purchased by FANNING H. WEEDEN in 1940  
 Re-Surveyed by W.N. Willis, Engrs  
 Oct. 7, 1940  
 Field Jns. Staylor

Registered, Certified &  
 Examined Jan 9-1941  
 at 2:47 P.M

BAER TRAIL  
 MARKED LINE  
 Elizabeth Houston Est.  
 N 70° 51' W 783  
 N 70° 51' W 40 STREET RESERVED  
 1569.6'  
 MARKED LINE

330'  
 N 19° 09' E 370'  
 275'  
 FENCE  
 511° 15' W 375'  
 DEAN  
 Stake

No. 7  
 2.2 AC.

Note: Subdivision Lines not staked