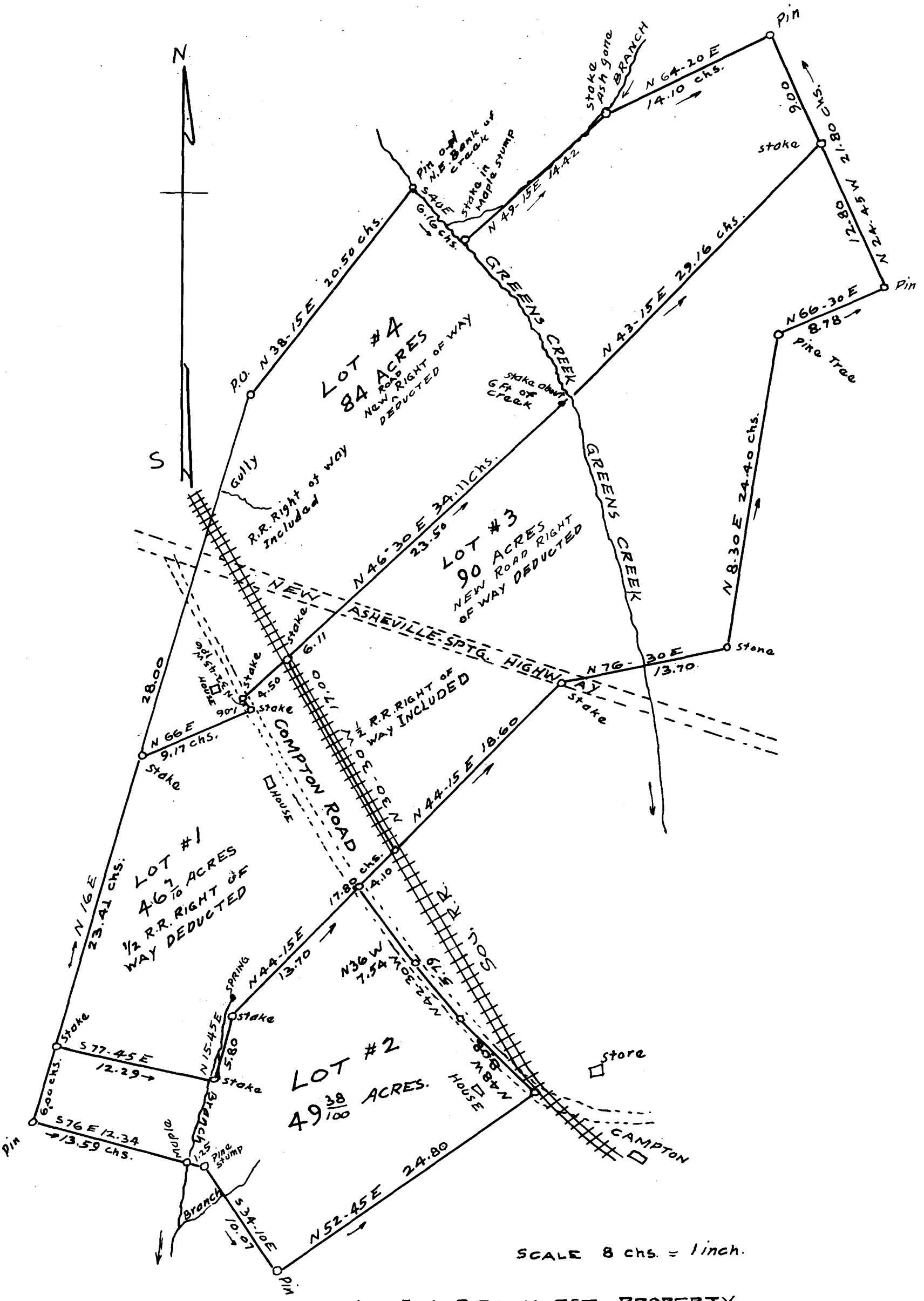


EX PARTE  
J. A. BROCK ESTATE

23



SCALE 8 chs. = 1 inch.

THE J. A. BROCK EST. PROPERTY  
SURVEYED AT REQUEST OF EXEC'T.  
OCT. 18 - NOV. 18 - 1940

D. N. LOFTIS, SURVEYOR  
R. 2. CAMPOBELLO, S.C.

ABOVE PROPERTY NEAR COMPTON  
ABOUT ONE MILE AND 1/2 BELOW INMAN, S.C.

Registered, certified & Examined January 10<sup>th</sup> 1941 at 12:42 P.M.