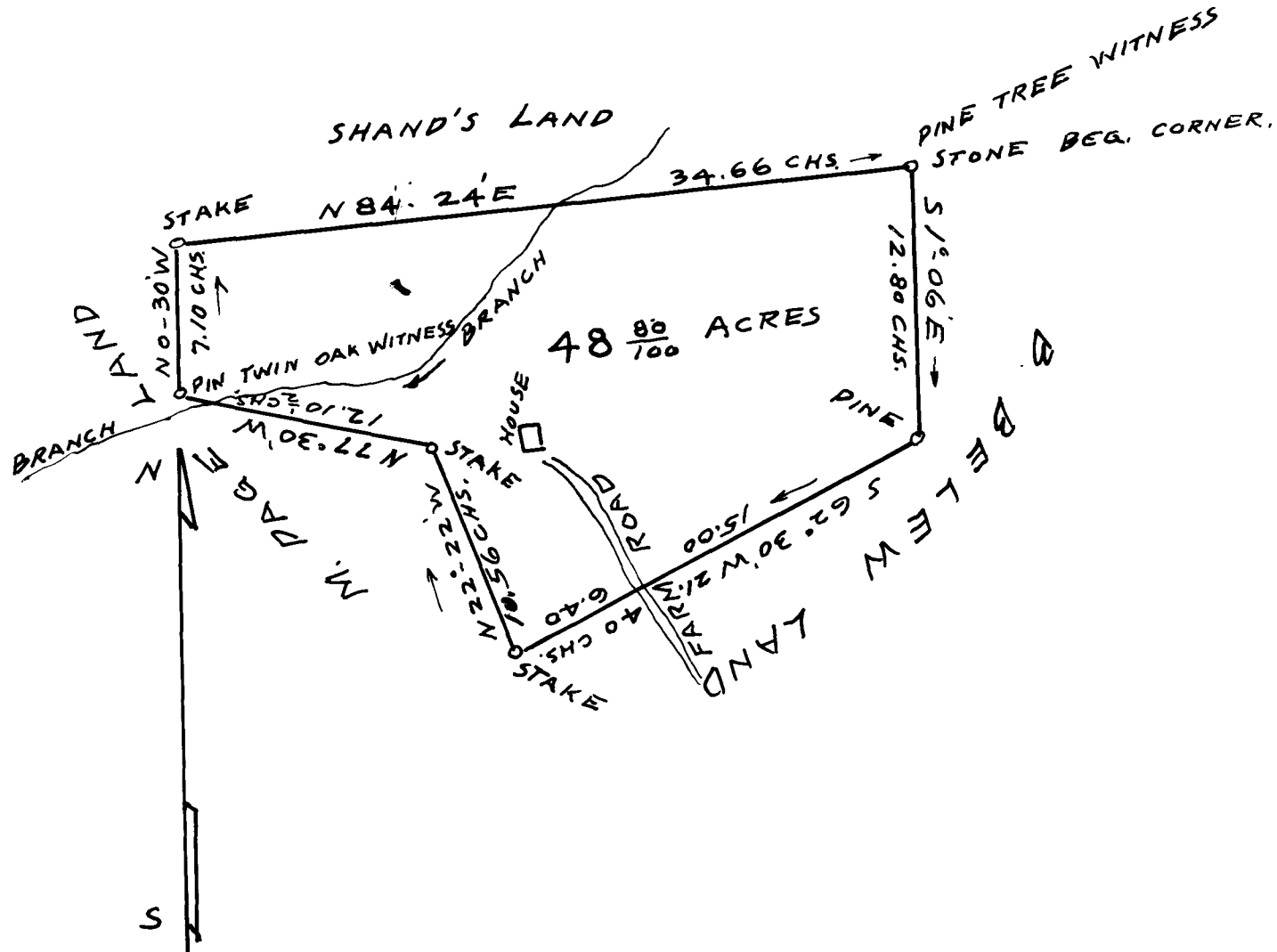


36

EX PARTE
A. W. TINDALL



SCALE 8 CHS. = 1 INCH.

THE ABOVE PLAT IS A TRUE REPRESENTATION OF A LOT OR PARCEL OF LAND IN CAMPOBELLO SCHOOL DISTRICT, CAMPOBELLO TOWNSHIP, SPARTANBURG COUNTY, SOUTH CAROLINA, BOUGHT BY A.W. TINDALL OF INMAN, S.C. AND SURVEYED AT HIS REQUEST THIS 23 DAY OF DEC. 1940 BY D. N. LOFTIS, SURVEYOR LAND ABOUT THREE MILES EAST OF CAMPOBELLO, S.C. ON BRANCH WATERS OF SOUTH PACOLET RIVER. ALSO ADJOINING LAND OWNERS.

D. N. LOFTIS, SURVEYOR
R. 2, CAMPOBELLO, S.C.

Registered, certified & Examined March 3-1941 at 11:39 a.m.