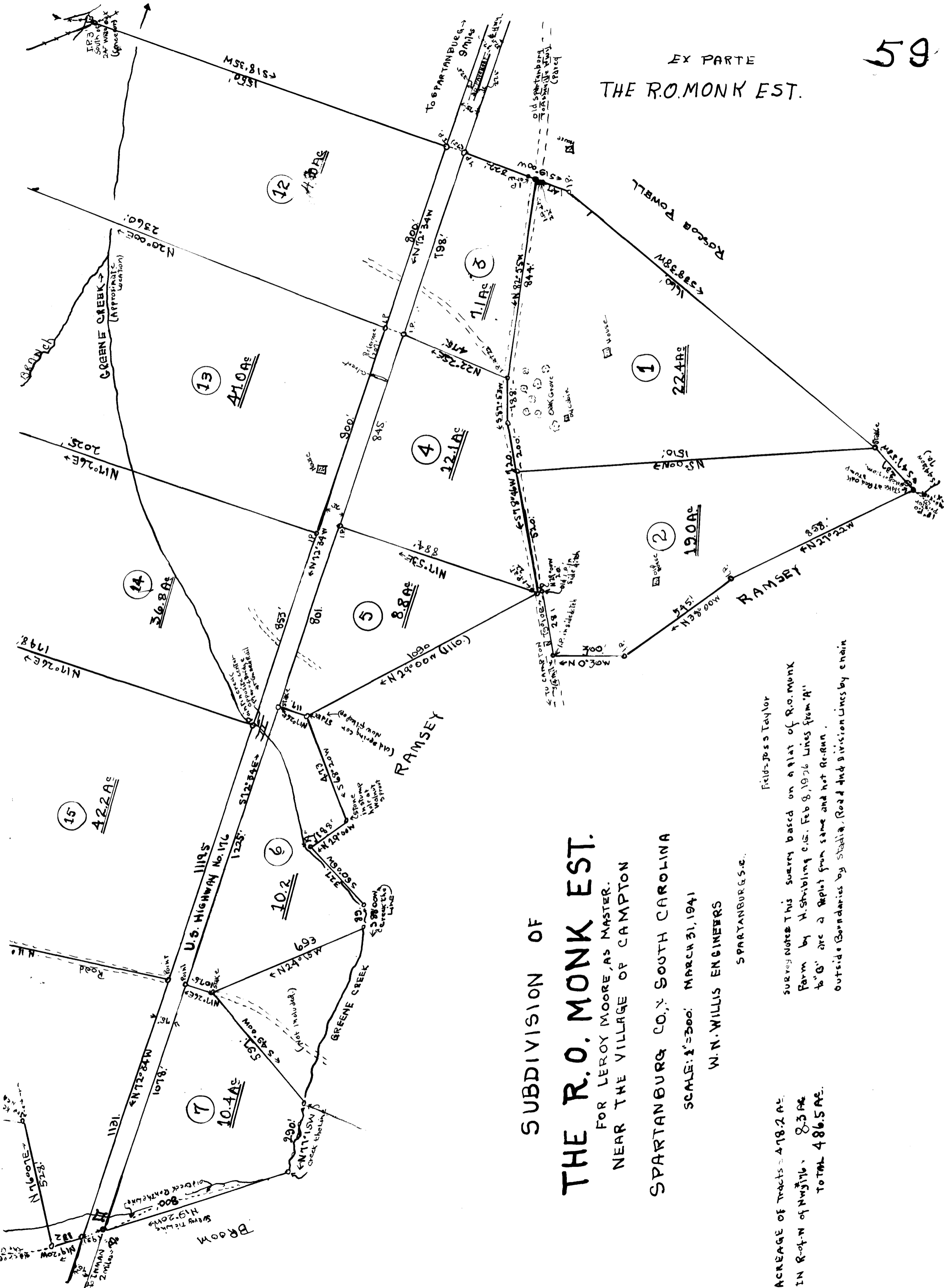


Registered, Certified, & Examined April 11, 1941 at 2:52 P.M

GREEN CREEK
L.G. METCALF

EX PARTE
THE R.O. MONK EST.



SUBDIVISION OF
THE R.O. MONK EST.
 FOR LEROY MOORE, AS MASTER.
 NEAR THE VILLAGE OF CAMPTON
 SPARTANBURG CO., SOUTH CAROLINA

SCALE: 1"=300' MARCH 31, 1941
 W.N. WILLIS ENGINEERS
 SPARTANBURG, S.C.

Field-Jos Taylor
 Survey Note: This survey based on a plat of R.O. MONK
 Farm by H. Strubling C.S. Feb 8, 1926 Lines from "A"
 to "G" are a plot from same and not re-run.
 outside boundaries by stadia, Road and division lines by chain

ACREAGE OF TRACTS = 418.2 AC.
 IN R-OF-N of N176° 8.3 AC
 TOTAL 486.5 AC.