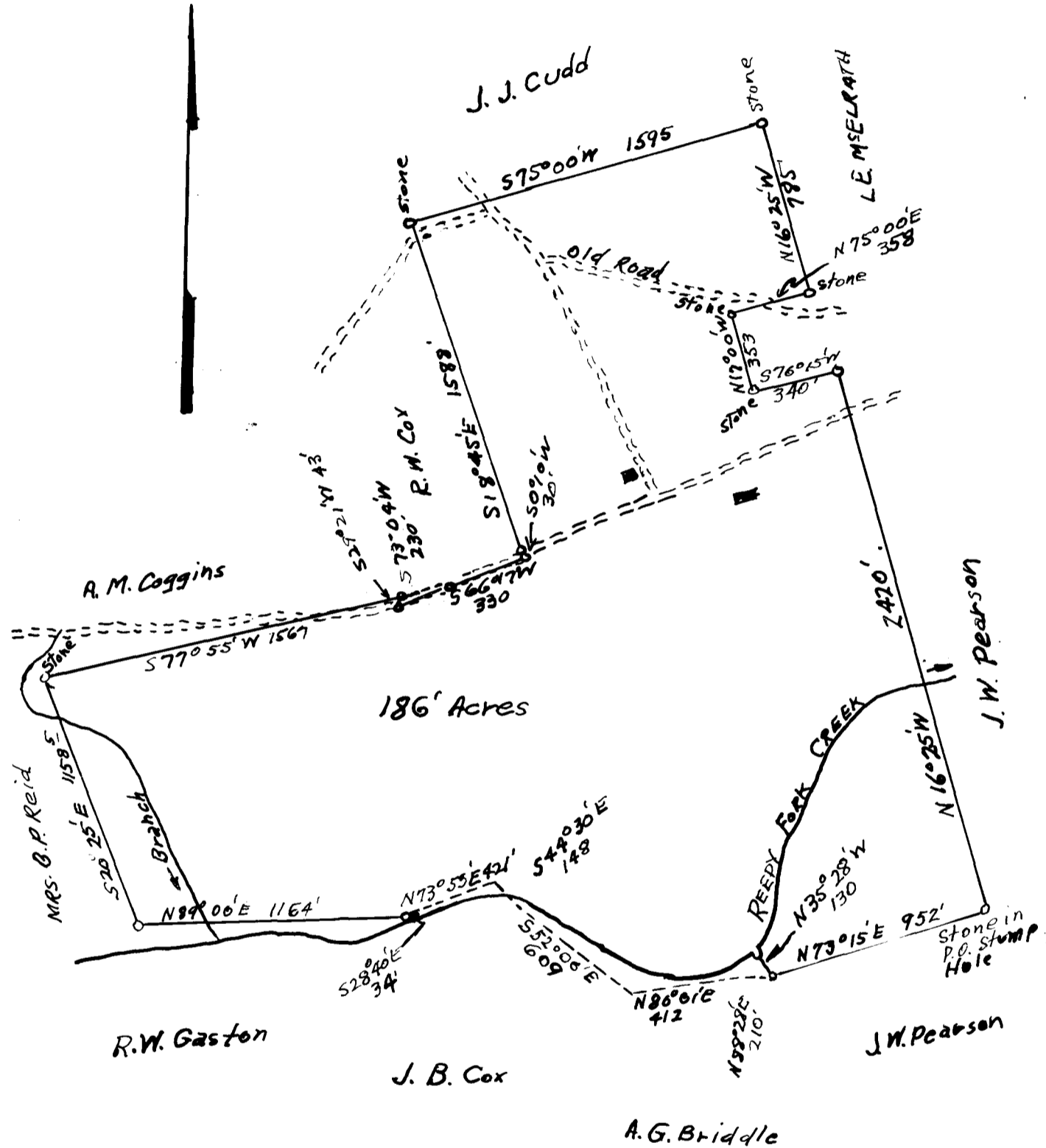


EX PARTE
T. R. GASTON



Survey made by this office
June 3, 1920 Revised to date

W. C. Bowen, C.E.

PROPERTY OF
T. R. GASTON
NEAR REIPVILLE IN
SPARTANBURG COUNTY, S. C.
SCALE 1" = 600' AUG 15, 1933
W. N. Willis ENGRS
SPARTANBURG, S. C.

Registered, Certified, Examined April 15, 1941 at 4:55 P.M.