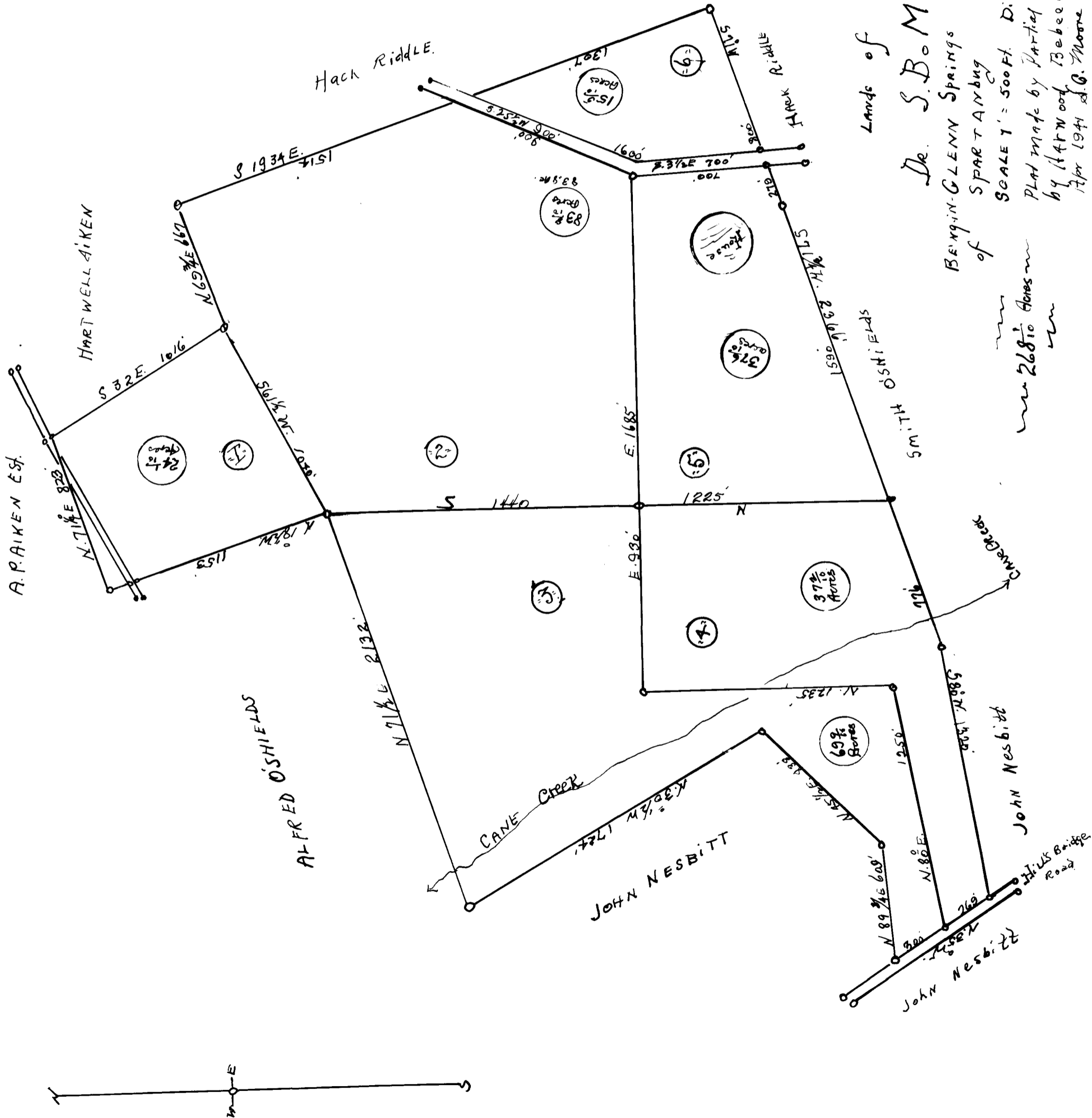


EX PARTE

DR. S. B. MOORE



Lands of
Dr. S. B. MOORE
 BENJAMIN-GLENN SPRINGS TOWNSHIP
 of
 SPARTANBURG COUNTY, S.C.
 SCALE 1" = 500 FT. Dimensions and Acreage to next or -
 Plat made by Partial Survey and from Plat made
 by HATHWOOD, Bebee Co., NORT 6th 1933,
 Apr 1941 S.B. Moore of Hall Co Ga Reg # 267 Georgia

268 1/2 Acres

Registered, Certified, & Examined May 5, 1941 at 4:24 P.M.