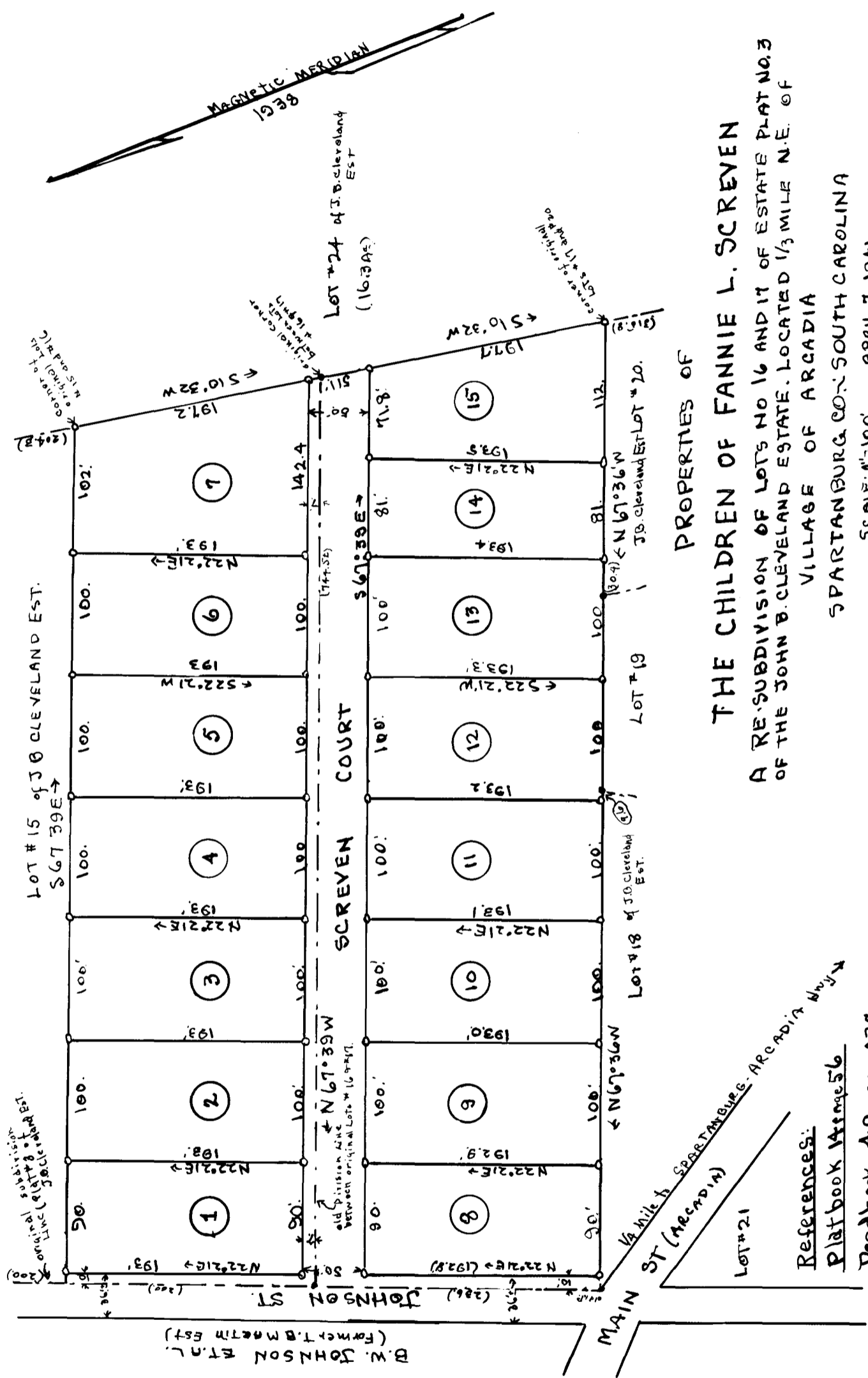


EX PARTE

THE CHILDREN OF FANNIE L. SCREVEN



PROPERTIES OF THE CHILDREN OF FANNIE L. SCREVEN

A RE-SUBDIVISION OF LOTS NO 16 AND 17 OF ESTATE PLAT NO. 3 OF THE JOHN B. CLEVELAND ESTATE, LOCATED 1/3 MILE N.E. OF VILLAGE OF ARCADIA SPARTANBURG CO., SOUTH CAROLINA

SCALE: 1"=100' APRIL 7, 1941 W.M. WILMS ENGINEERS SPARTANBURG, S.C.

Field: Sols. S. Taylor

References: Plat book 14 page 56 Deed book 40 page 431

Note: Steel PINS Set at ALL CORNERS.

Registered, Certified, & Examined May 12, 1941 at 4:47 P.M.