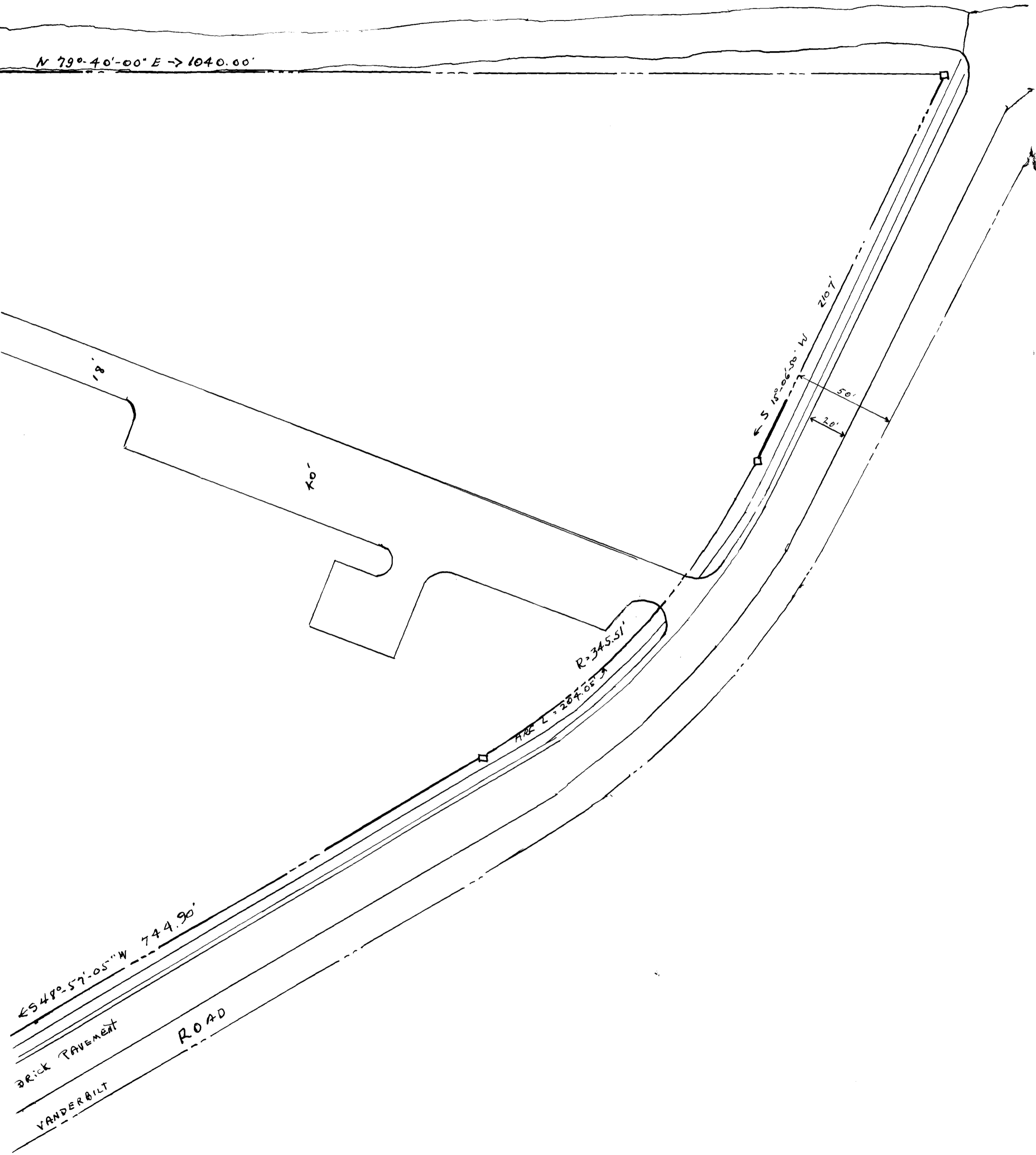


W O F F O R D S T R E E T

N 79° 40' 00" E → 1040.00'



E 54° 57' 05" W 744.90'

BRICK PAVEMENT
VANDERBILT ROAD

R=345.51'

ARC L=287.0273

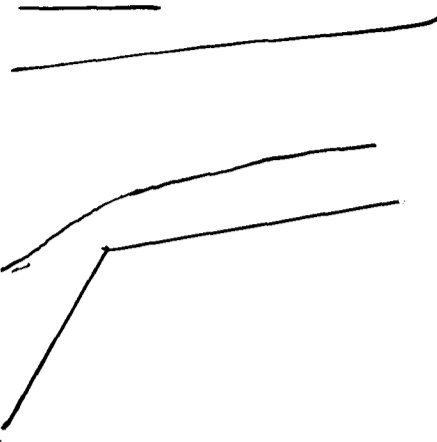
S 18° 06' 00" W 210.7'

210.7'

50'

20'

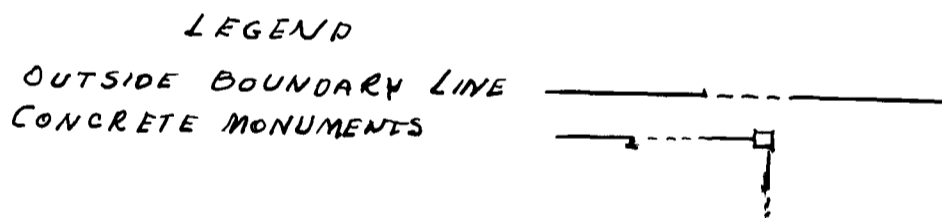
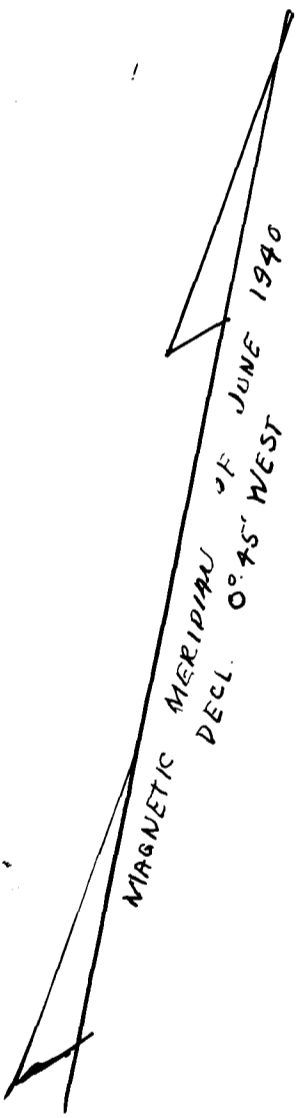
Registered, Certified, & Examined May 13, 1941 at 4:14 P.M.



EX PARTE

HUB CITY COURTS

PART TWO



SCALE: 1" = 40'

"

HUB CITY COURTS

CITY OF SPARTANBURG, S.C.

PROPERTY RECORD MAP		
PROJECT S. C. 3-2 FOR THE HOUSING AUTHORITY OF THE CITY OF SPARTANBURG, S. C. UNDER LOAN CONTRACT WITH UNITED STATES HOUSING AUTHORITY		
DRAWN BY R.A.L.	J. H. GOOCH, SUP. SPARTANBURG, S.C.	SHEET
CHECKED BY J. N. G.	DATE DRAWN May 9, 1941 DATE REVISED	
APPROVED HOUSING AUTHORITY OF SPARTANBURG, S.C.		
		CHAIRMAN