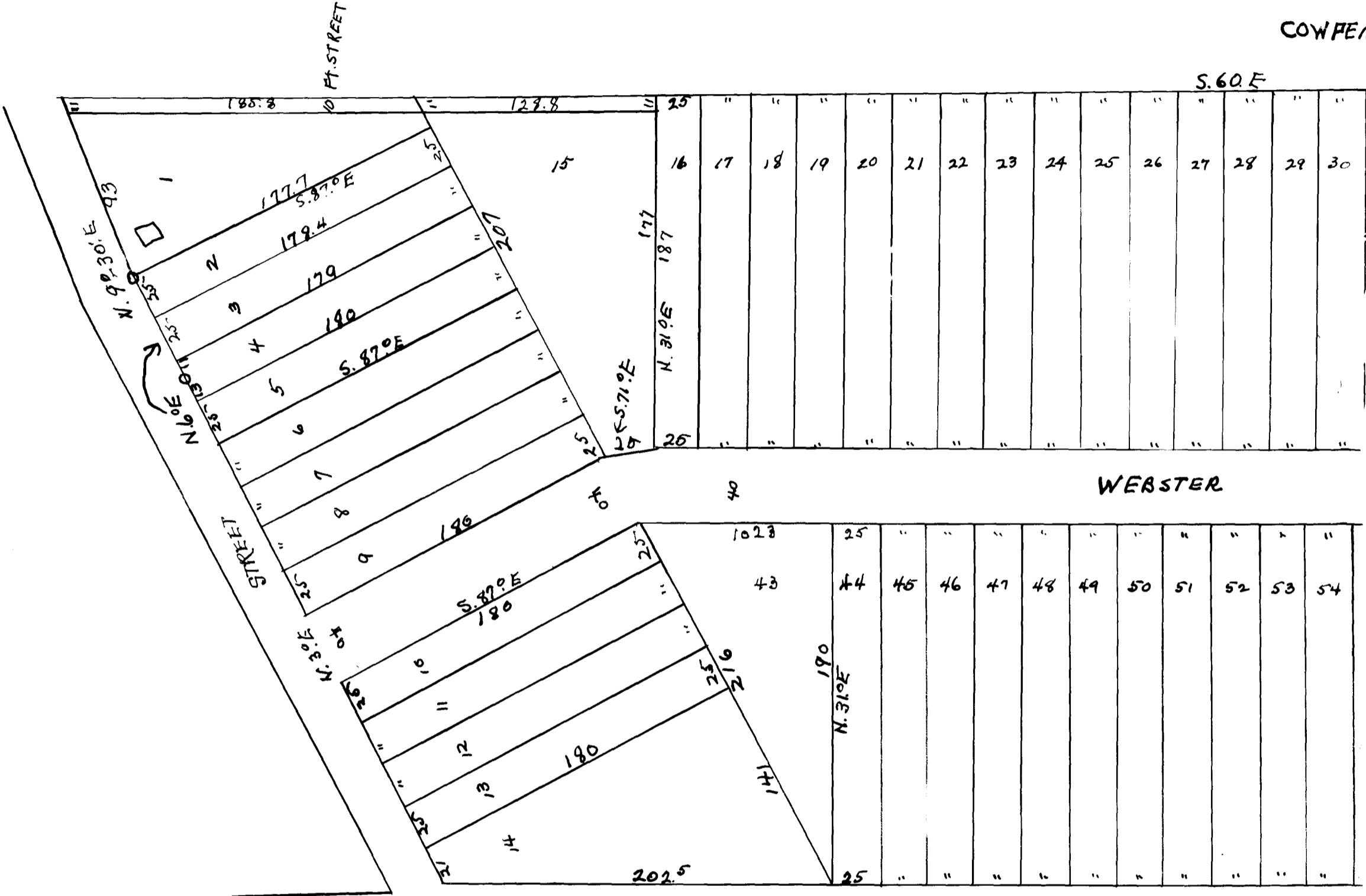


EX PARTE

F.W. & W.T. WEBSTER

COWPEN



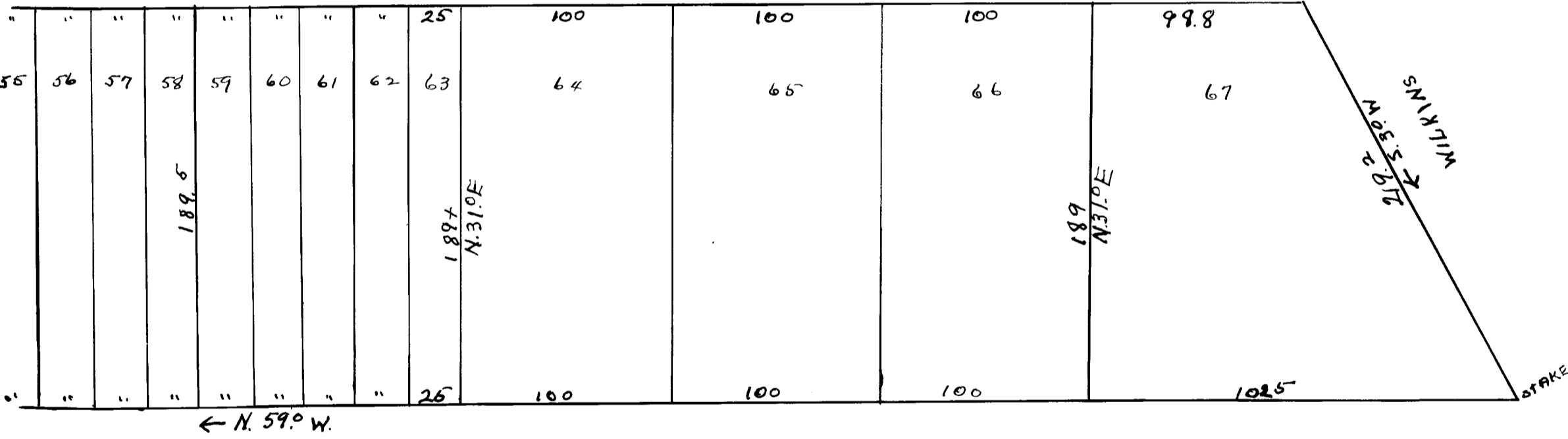
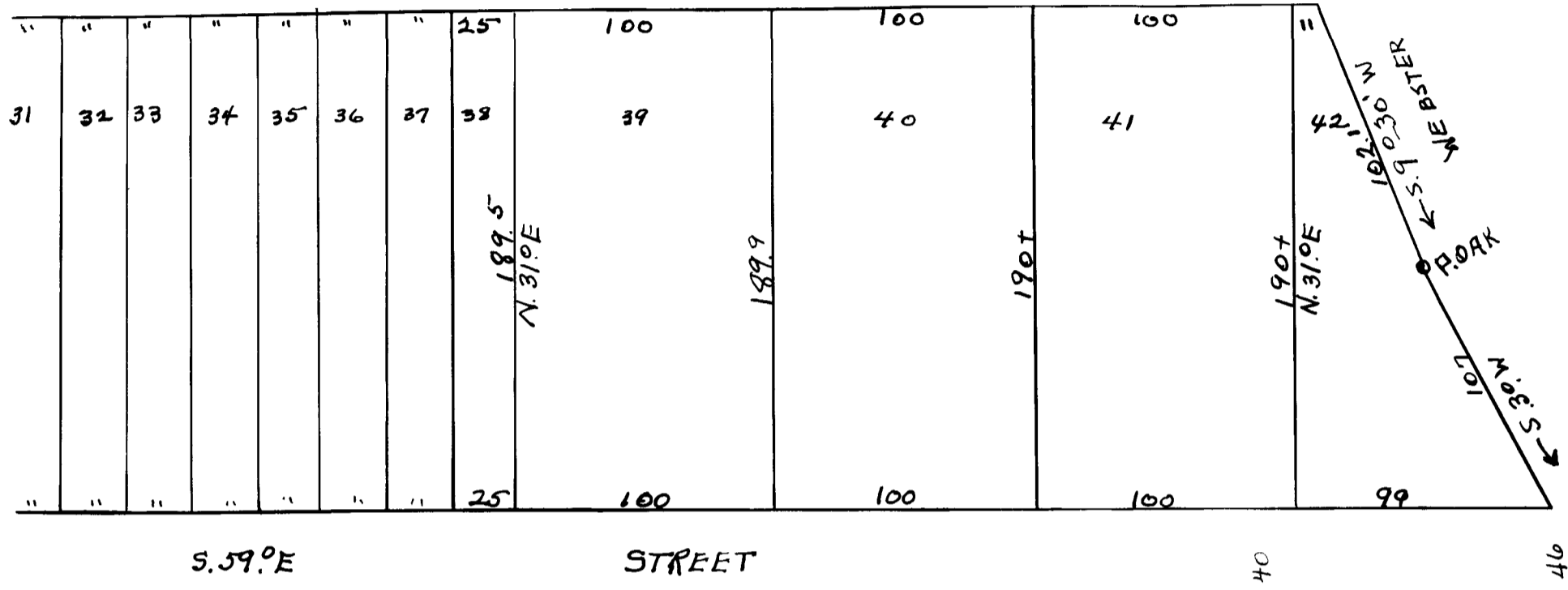
F.W. & W.T. WEBSTER
PROPERTY

COWPENS 32.
1" = 60' APRIL 9-1941

JOHN L. STACY
REGD SURVEYOR

PLAT # 2

S MILL PROPERTY



Registered, Certified, & Examined May 15, 1941 at 3:26 P.M.