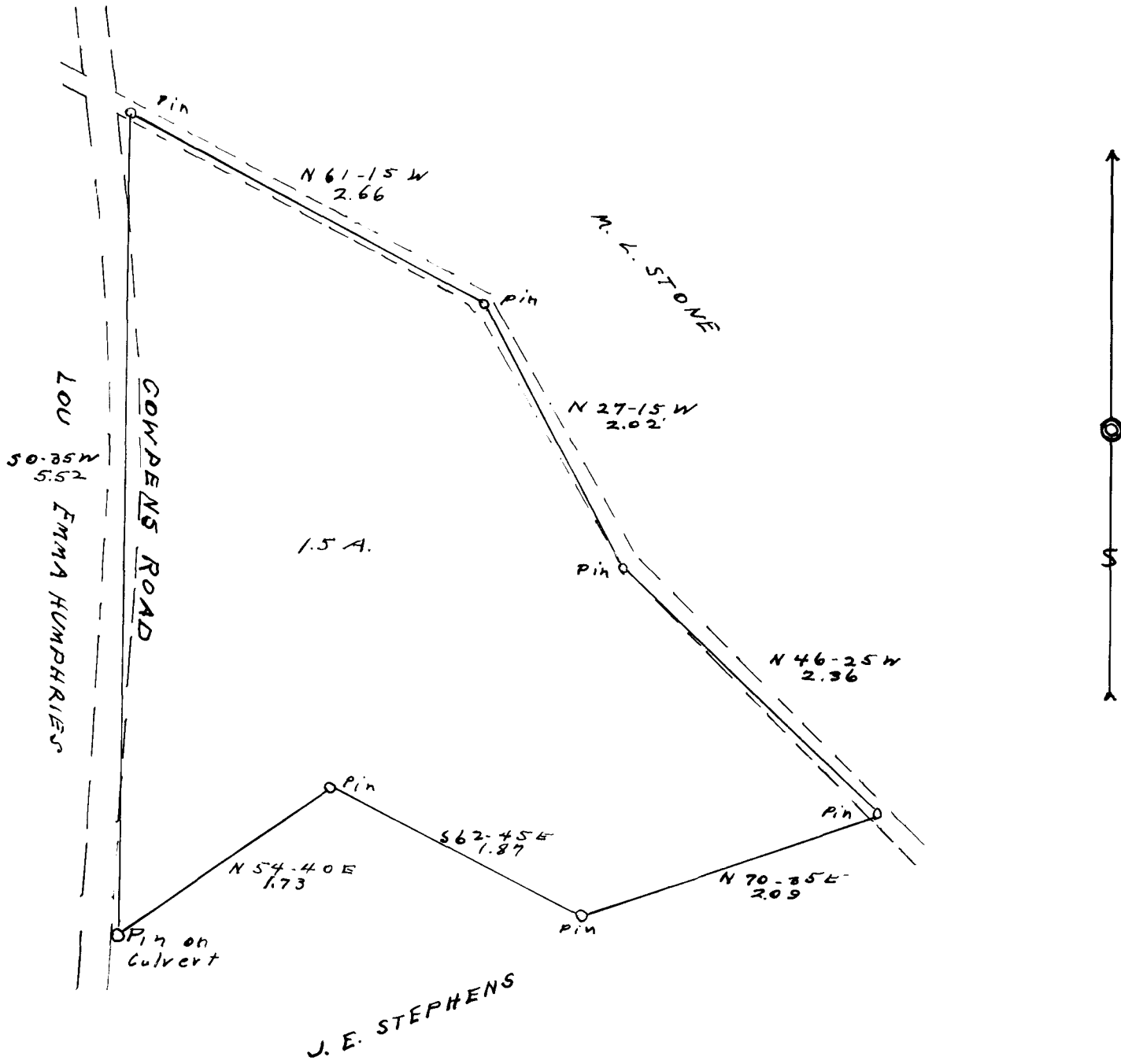


EX PARTE

JESSE E. STEPHENS & ROY & GEORGIA BLANTON



SURVEYED IN A PROPOSED CONVEYANCE

JESSE E. STEPHENS

To

ROY & GEORGIA BLANTON

ONE LOT LYING NEAR

MAYO SCHOOL

SPARTANBURG COUNTY

SOUTH CAROLINA

1" = 1 Ch.

NOV 20, 1940

Thos. T. Linder  
Reg. Sur.

Registered, Certified, & Examined June 2, 1941 at 3:42 P.M.