

108

EX PARTE

W. M. & M. J. WEST

LEGEND-FOR-BRANCH

- S. 83 1/2 W. 2.60 CHS.
- S. 47 1/2 W. 5.40 "
- S. 25 1/2 W. 2.60 "
- S. 46 E. 0.84 "
- S. 21 W. 3.91 "
- S. 38 W. 4.00 "
- S. 24 1/2 W. 7.16 " TO SYCAMORE

LEGEND-FOR-CREEK

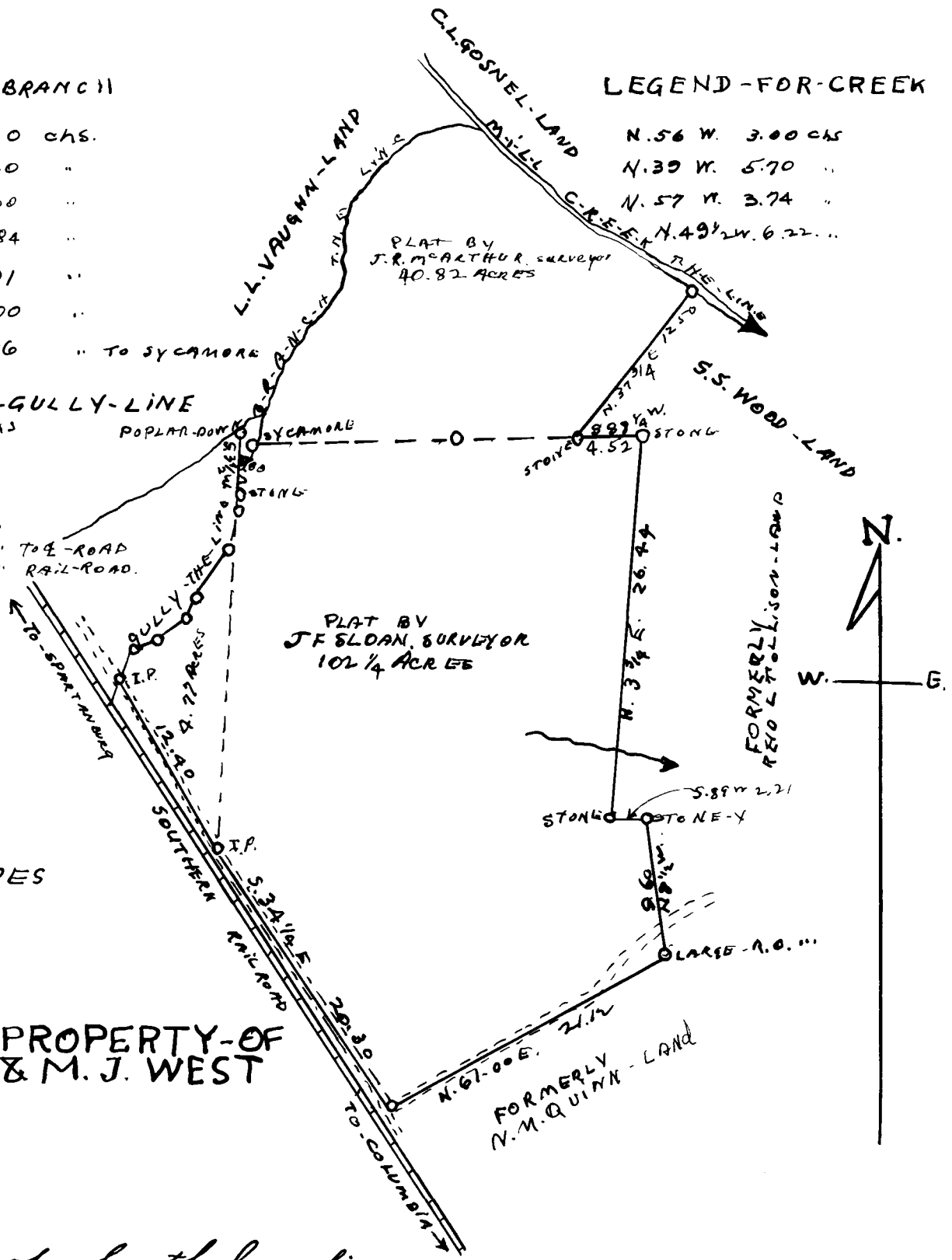
- N. 56 W. 3.00 CHS
- N. 39 W. 5.70 "
- N. 57 W. 3.74 "
- N. 49 1/2 W. 6.22 "

LEGEND-FOR-GULLY-LINE

- S. 18 E. 1.72 CHS
- S. 6 W. 3.32 "
- S. 13 W. 2.57 "
- S. 37 W. 4.00 "
- S. 18 1/2 W. 1.16 "
- S. 66 W. 2.50 "
- S. 57 W. 1.80 " TO E-ROAD
- S. 22 W. 1.80 " RAIL-ROAD

TOTAL 147.84 ACRES

MAP-OF-PROPERTY-OF W. M. & M. J. WEST



State of South Carolina
County of Spartanburg

I hereby certify that I have this the 11th day of May 1927, compiled the above plat from three plats, as follows: one by J. F. Sloan surveyor made Feb. 5th, 1885 for 102.4 Acres; one by J. R. McArthur, surveyor, Dec. 1909 for 40.82 Acres; one by W. J. Wells, surveyor, Jan. 1922 for 4.72 Acres; and that the above plat correctly represents the land shown hereon, which contains One hundred Forty Seven and 84/100 (147.84) Acres

This the 11th day of May 1927

H. S. Brockman
Surveyor

Scale: 1" = 10 chains

Registered, Certified, & Examined June 4, 1941 at 3:36 P.M.