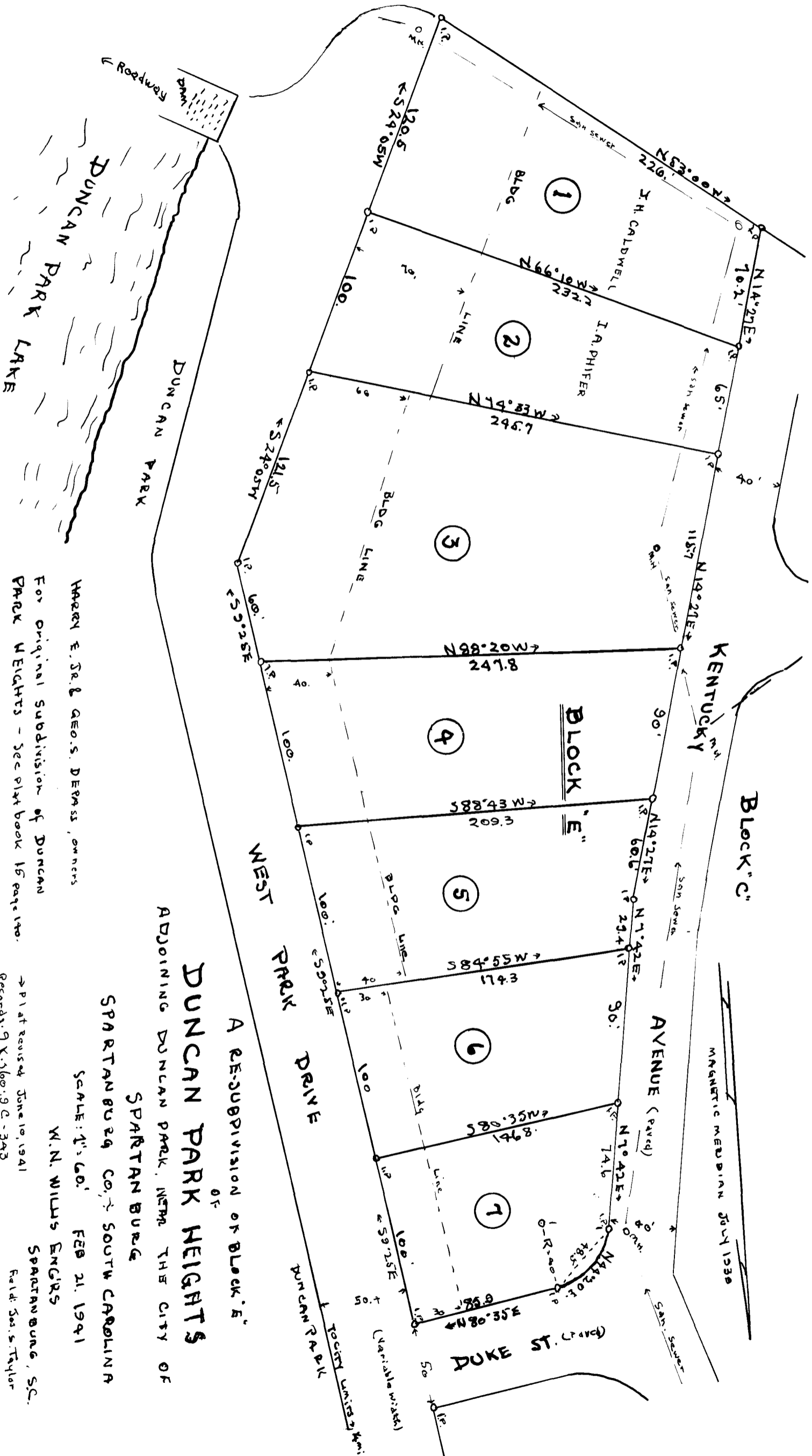


EX PARTE

DUNCAN PARK HEIGHTS BLOCK "E"



HARRIS E. SELB GEO.S. DEPASS, owners  
 FOR ORIGINAL SUBDIVISION OF DUNCAN  
 PARK HEIGHTS - See plat book 16 page 100.

→ Plat recorded June 10, 1941  
 Records: B.X. 3600:9.C. - 343

ADJOINING DUNCAN PARK, WITHIN THE CITY OF  
**DUNCAN PARK HEIGHTS**  
 OF  
 SPARTANBURG CO., SOUTH CAROLINA  
 SPARTANBURG  
 SCALE: 1" = 60'  
 FEB 21, 1941  
 W.N. WILLIS ENGRS  
 SPARTANBURG, S.C.  
 Field: Sols. Taylor

Registered, Certified and Examined June 13, 1941 at 4:11 p.m.