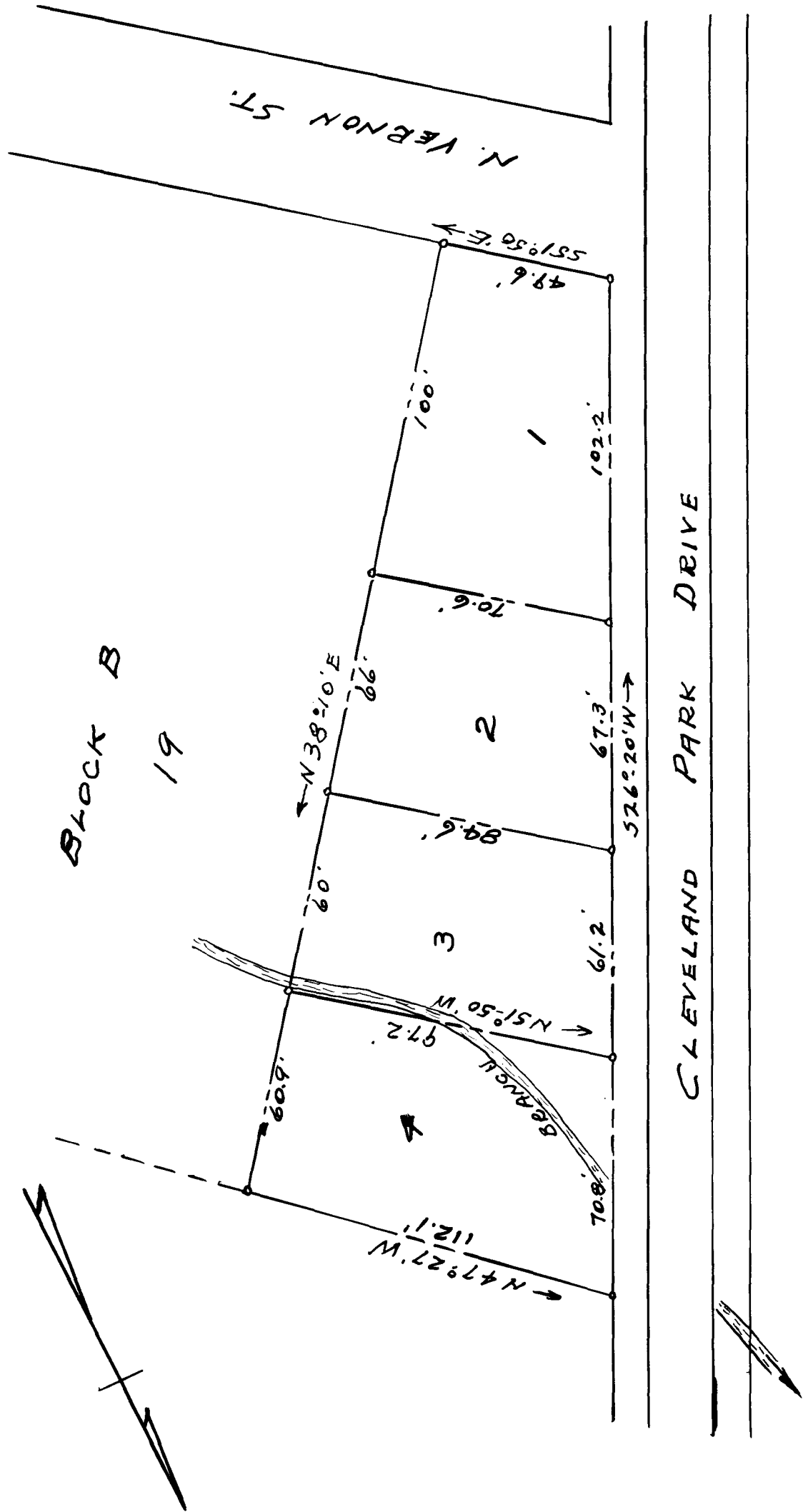


EX PARTE

CLAUDE R. DUNBAR



PROPERTY OF
CLAUDE R. DUNBAR

CITY OF SPARTANBURG, S.C.

SCALE: 1"=40' JUNE 17, 1941

BEING A RE-SUBDIVISION OF LOT 18, BLOCK B ON
 SUBDIVISION OF J.B. CLEVELAND EST. SEE ESTATE
 PLAT No. 2, PL. BK. 14 PAGES 53, 54, 55.

J. H. GOOCH, SUR.
 SPARTANBURG, S.C.
 FIELD: C.B. VASS

FILE # G-88

Registered, Certified & Examined June 23, 1941 at 12:19 P. M