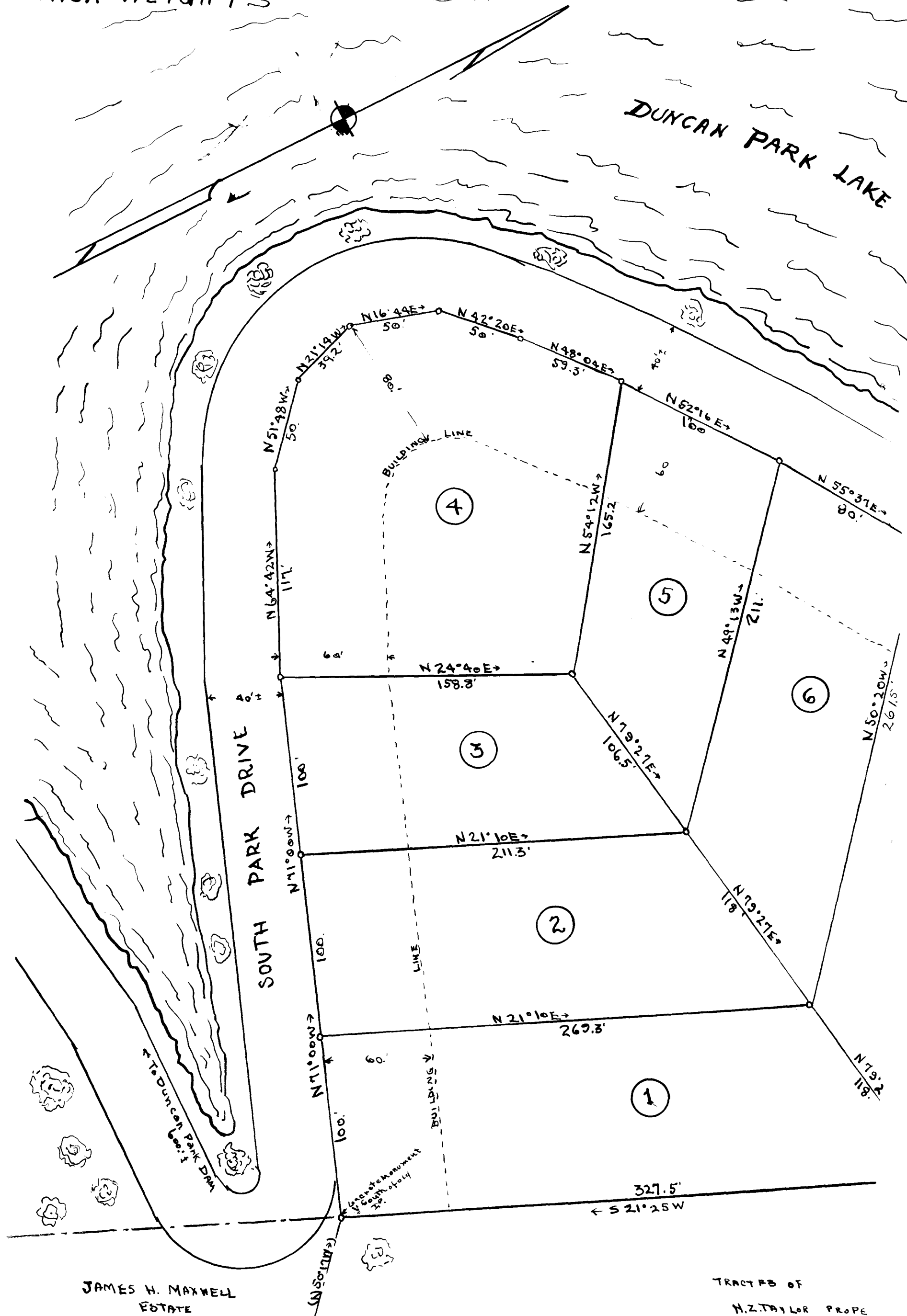


EX PARTE

DUNCAN PARK HEIGHTS



DUNCAN PARK HEIGHTS

UNIT NO. 3

A Residential Development along the Southern Shore of DUNCAN PARK LAKE in the Suburb of DUNCAN PARK, near the city of

SPARTANBURG

SPARTANBURG COUNTY, S.C.

PART OF LOT NO. 14 OF D. R. DUNCAN, EST

GEO. S. DEPASS, DEVELOPER

SCALE: 1" = 25' MARCH 29 1940

THE W. N. WILKS ENGINEERS
SPARTANBURG, S.C.

REVISED MAY 24 1941

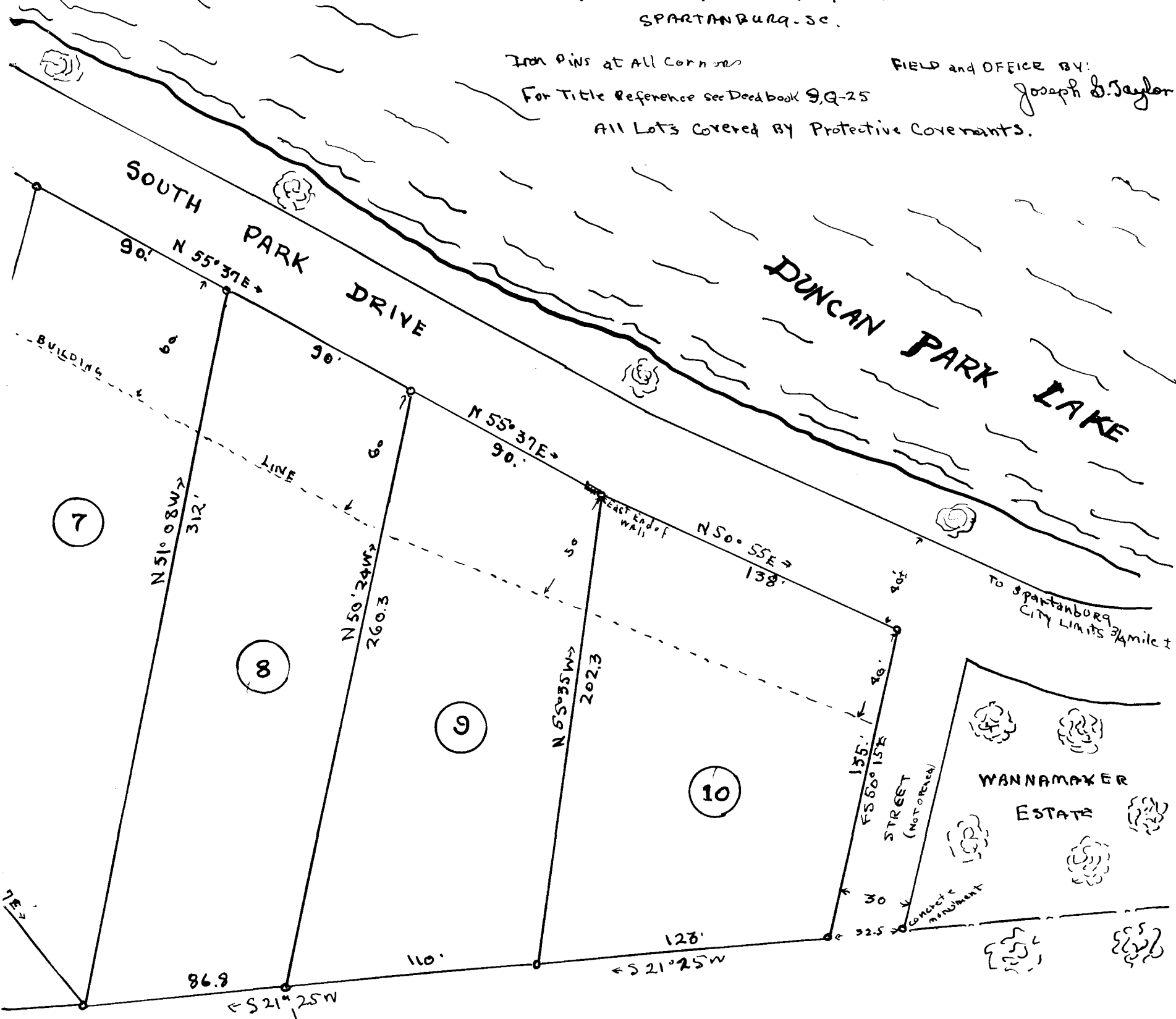
Iron PINS at ALL Corners

FIELD and OFFICE BY:

For Title Reference see Deedbook 9, Q-25

Joseph B. Taylor

All Lots Covered BY Protective Covenants.



TRACT #2 OF
H. Z. TAYLOR PROPERTY
(See Platbook 10 Page 15)

Registered, Certified, & Examined July 15, 1941 at 11:10 A.M.