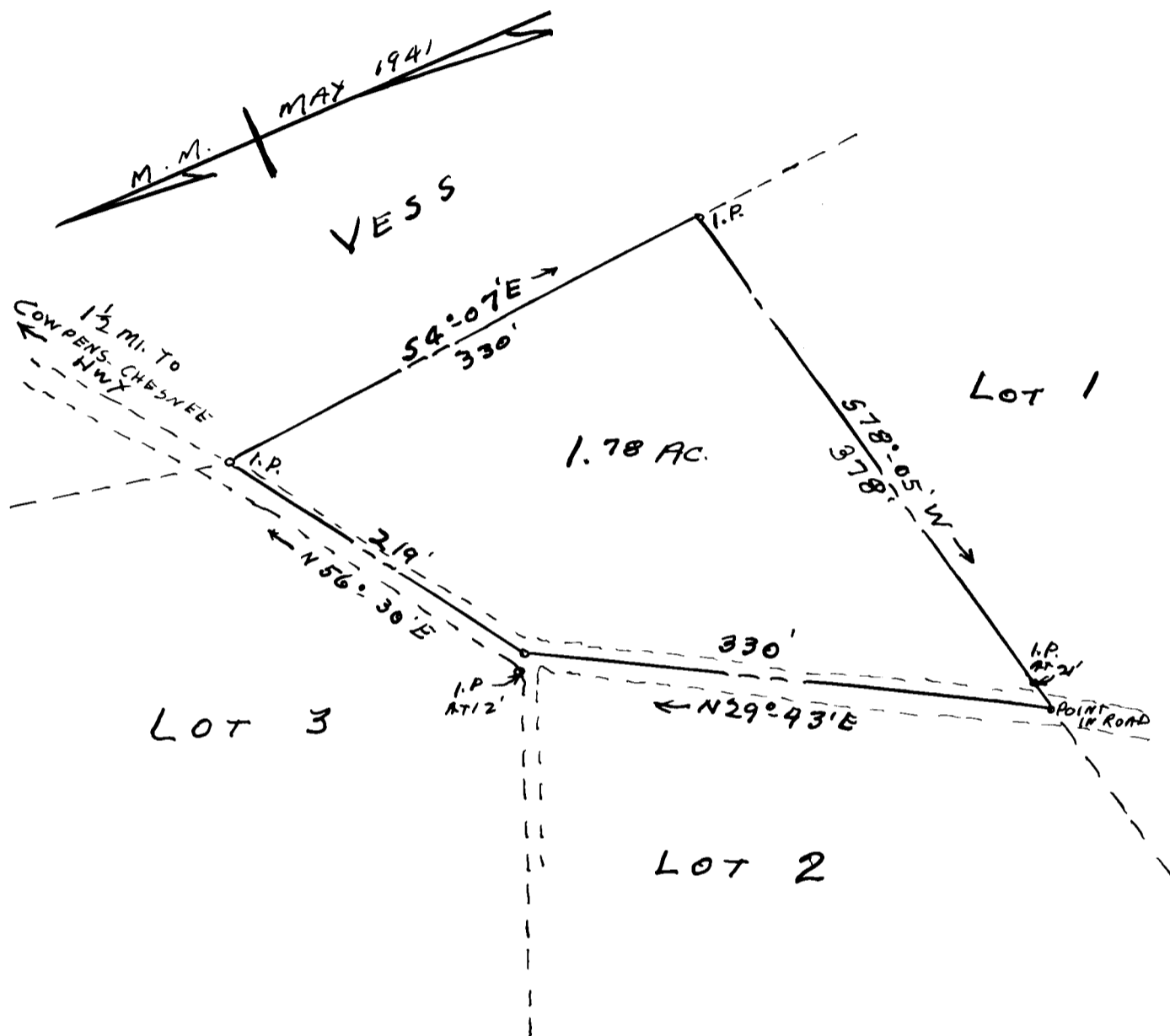


EX PARTE

JOHN C. O'BRIEN



PROPERTY OF
JOHN C. O'BRIEN
 ABOUT 3 1/2 MI. N.W. OF COMPENS
 SPARTANBURG COUNTY, S.C.
 SCALE: 1"=100' MAY 22, 1941

BEING PART OF LOT 2 OF SUBDIVISION OF THE
 J. B. DEWBERRY EST. SEE PLAT MADE BY
 H. STRIBLING, C.E. Oct. 17, 1935

J. H. GOOCH, SUR.
 SPARTANBURG, S.C.
 FIELD: C. B. VASS

FILE # 2-72

Registered, Certified & Examined July 29, 1941 at 11:33 A.M.