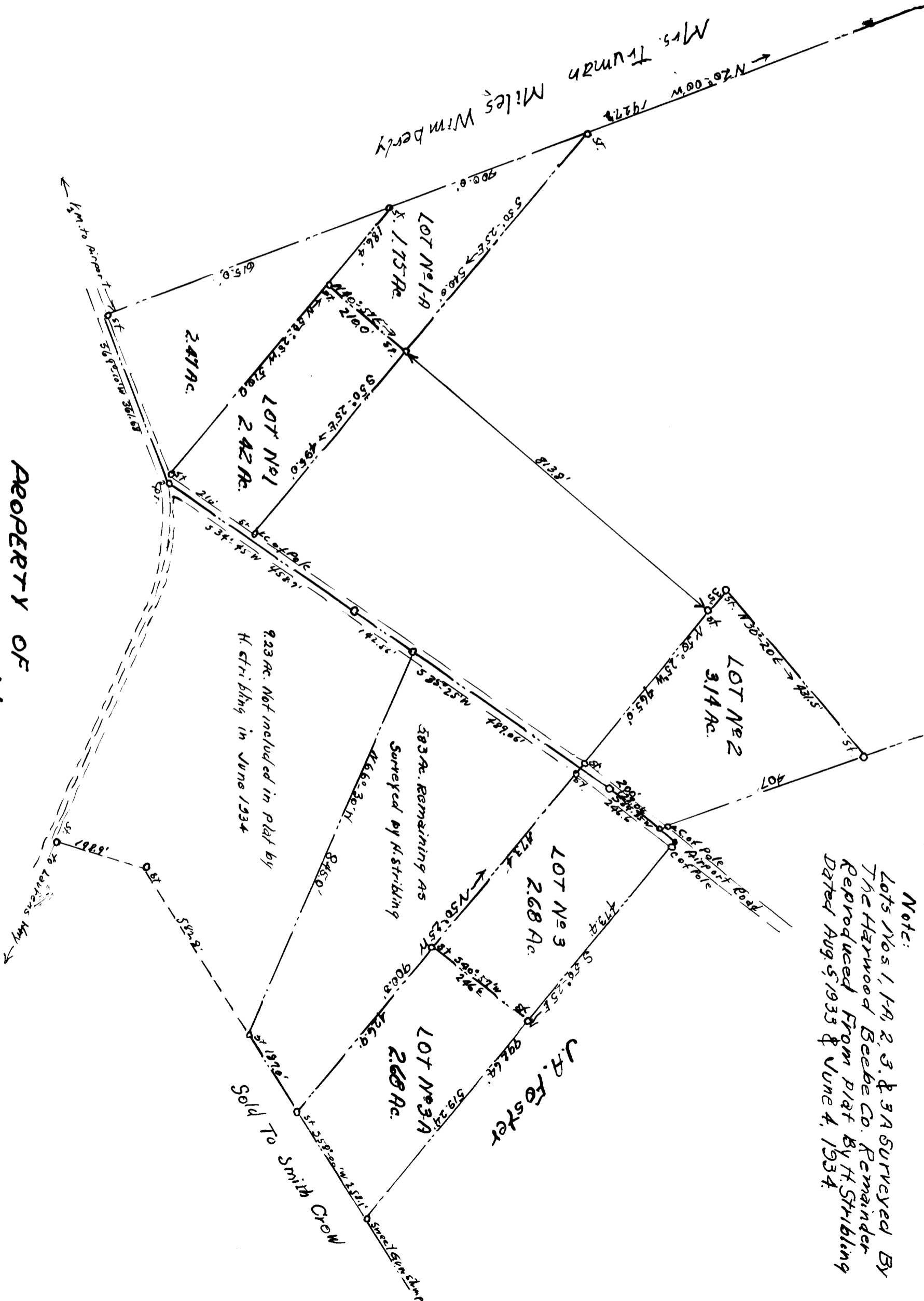


EX PARTE
H. D. WIMBERLY

Note:
Lots Nos 1, 1A, 2, 3 & 3A surveyed by
The Harwood Beebe Co. Remainder
Reproduced From Plat by H. Stribling
Dated Aug. 5, 1933 & June 4, 1934.



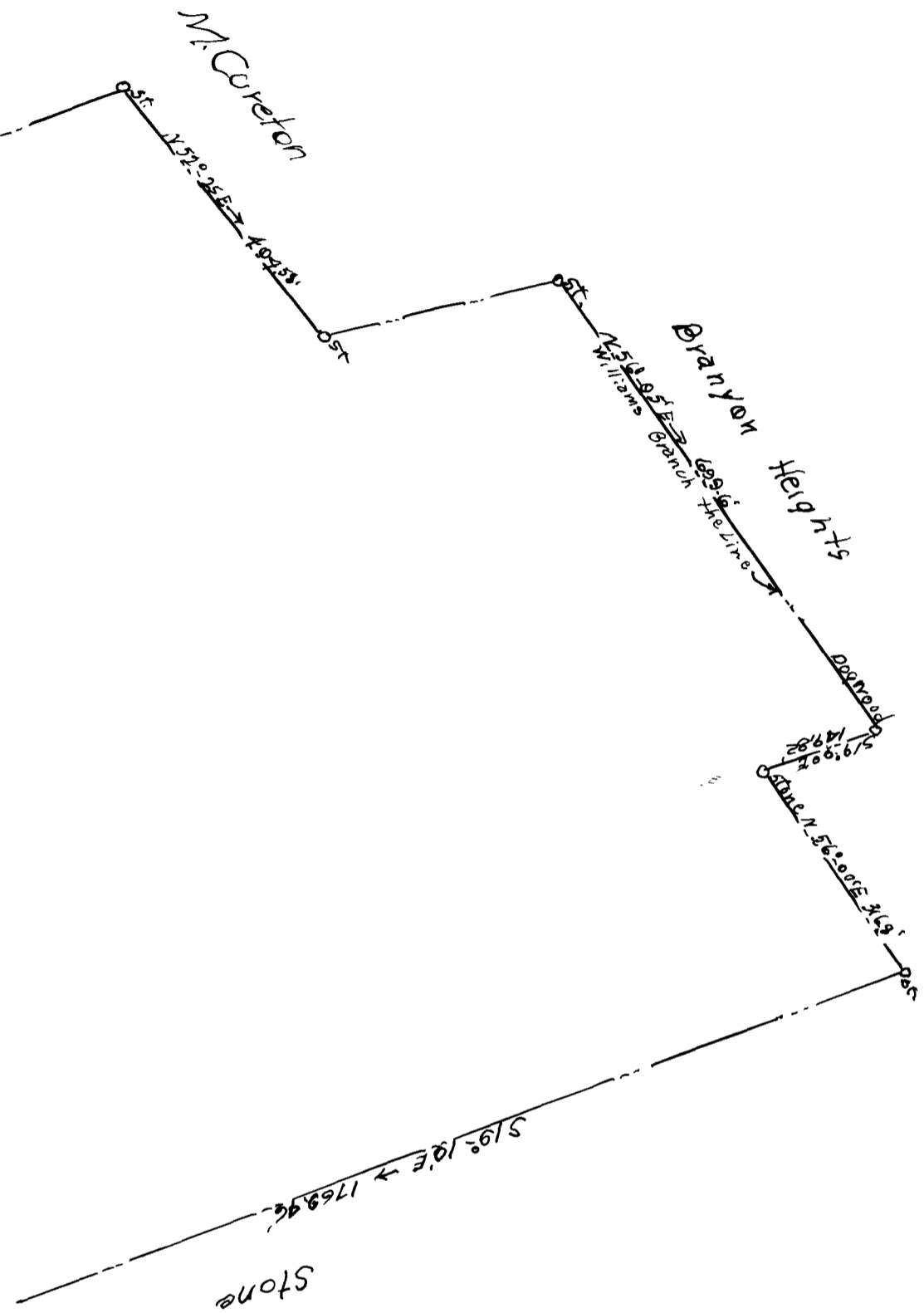
PROPERTY OF
H. D. WIMBERLY
NEAR THE CITY OF SPARTANBURG, S.C.
Scale 1"=200'
Date: May 2, 1941.

THE HARWOOD BEEBE CO.
MUNICIPAL AND CIVIL ENGINEERS
SPARTANBURG, S.C.

9.23Ac. Not included in plat by
H. Stribling in June 1934

J. H. Foster

Sold To Smith Crown



Registered, Certified, & Examined Aug 22, 1941 at 10:10 AM.