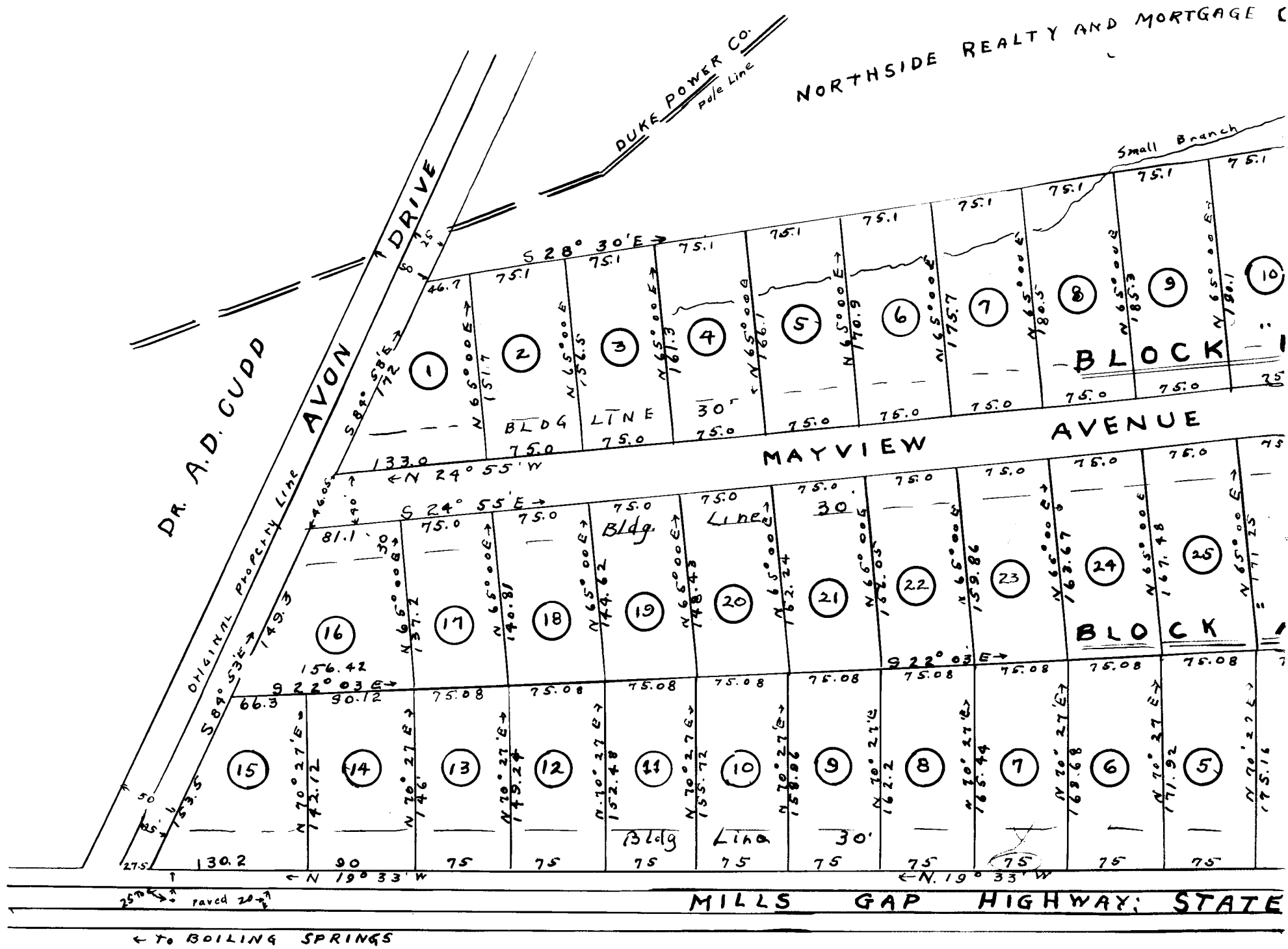


EX PARTE

AVON DALE: THE NORTHSIDE REALTY AND MORTGAGE CO.



# AVON

A RESIDENTIAL SUBURB 1 MILE OF SPARTANBURG

SPARTANBURG CO.

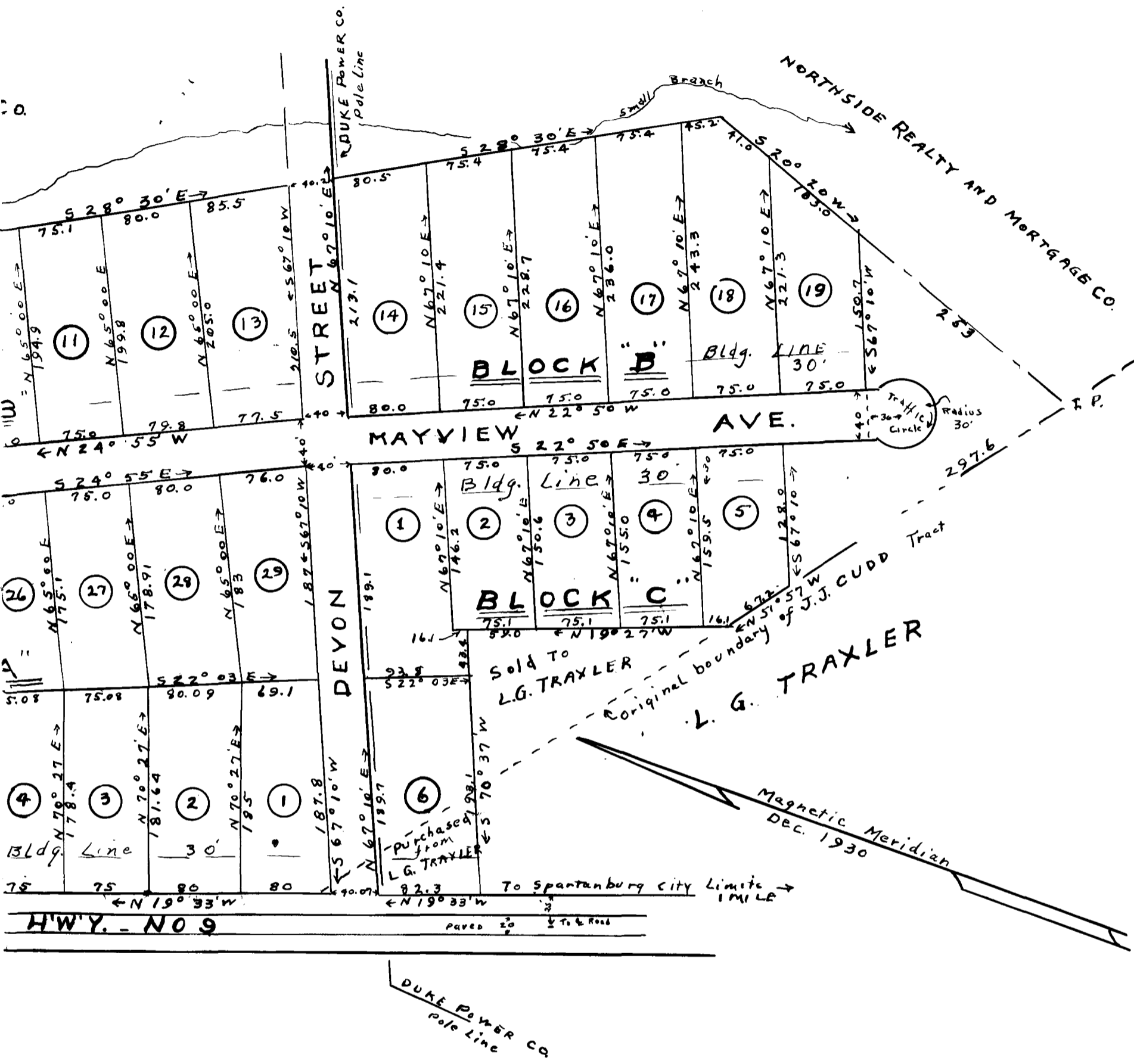
SCALE 1" = 100'

W. N. WILLIAMS

OWNED AND DEVELOPED By:

THE NORTHSIDE REALTY AND MORTGAGE CO.

Note: Iron Pins At All Corners



# DALE

NORTH OF THE CITY LIMITS  
SPARTANBURG  
SOUTH CAROLINA

September 2, 1941  
S. S. ENGINEERS  
Spartanburg, S.C.

Field: Jos. S. Taylor  
Plat: Norman Barnett

Deed Reference: Part of the J.J. Cudd land  
as described in Deed book 'YYY' page 45.

Registered, Certified and Examined Sept. 19, 1941 at 3:47 P.M.