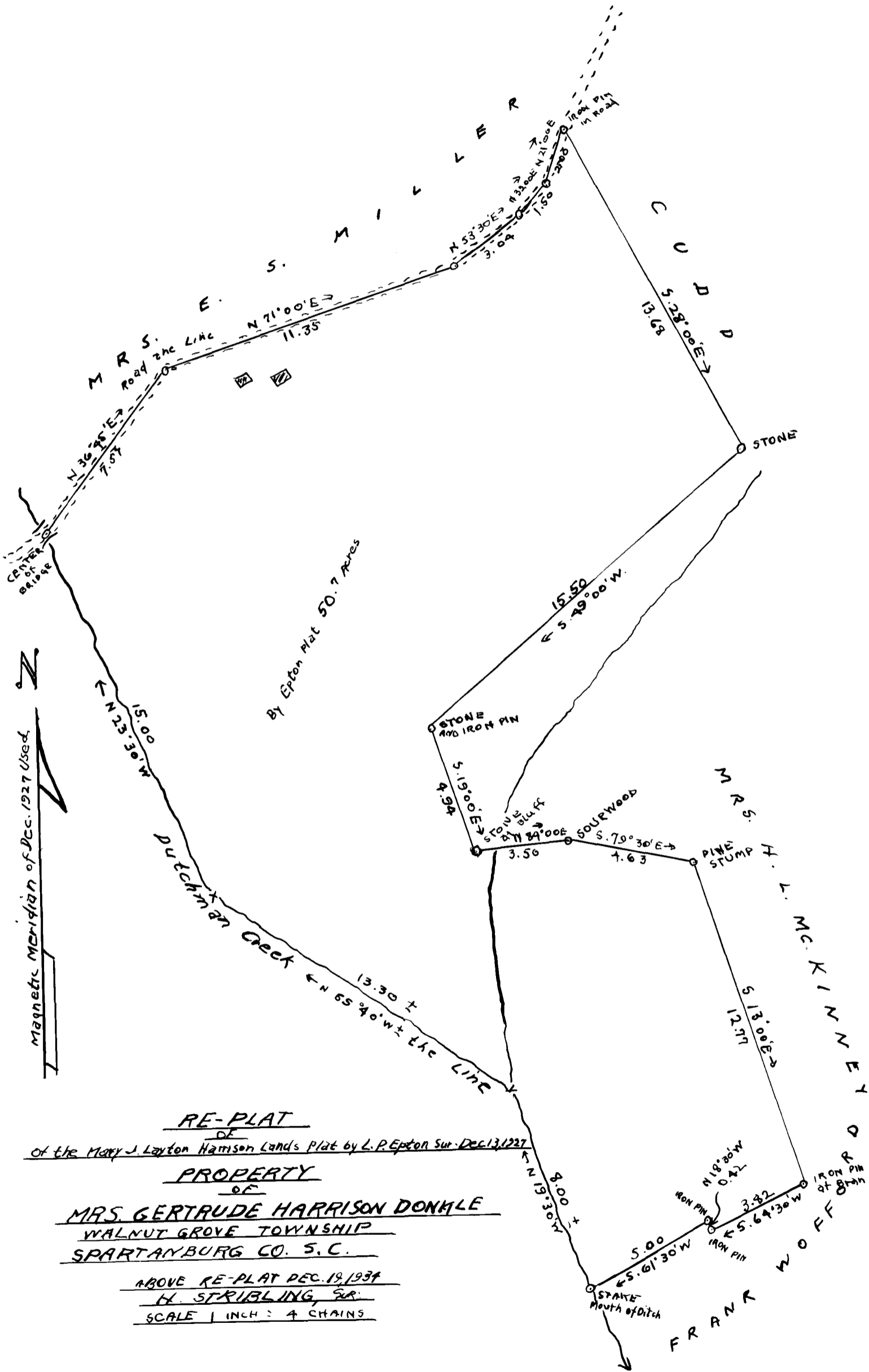


EX PARTE

MRS. GERTRUDE HARRISON DONKLE



RE-PLAT
 OF
 OF THE MARY J. LAYTON HARRISON LANDS PLAT BY L. P. EPTON SUR. DEC. 13, 1927
PROPERTY
 OF
MRS. GERTRUDE HARRISON DONKLE
 WALNUT GROVE TOWNSHIP
 SPARTANBURG CO. S. C.
 ABOVE RE-PLAT DEC. 19, 1934
 H. STRIBLING, SUR.
 SCALE 1 INCH = 4 CHAINS

Registered, Certified, and Examined Sept. 24, 1941 at 4:40 P.M.