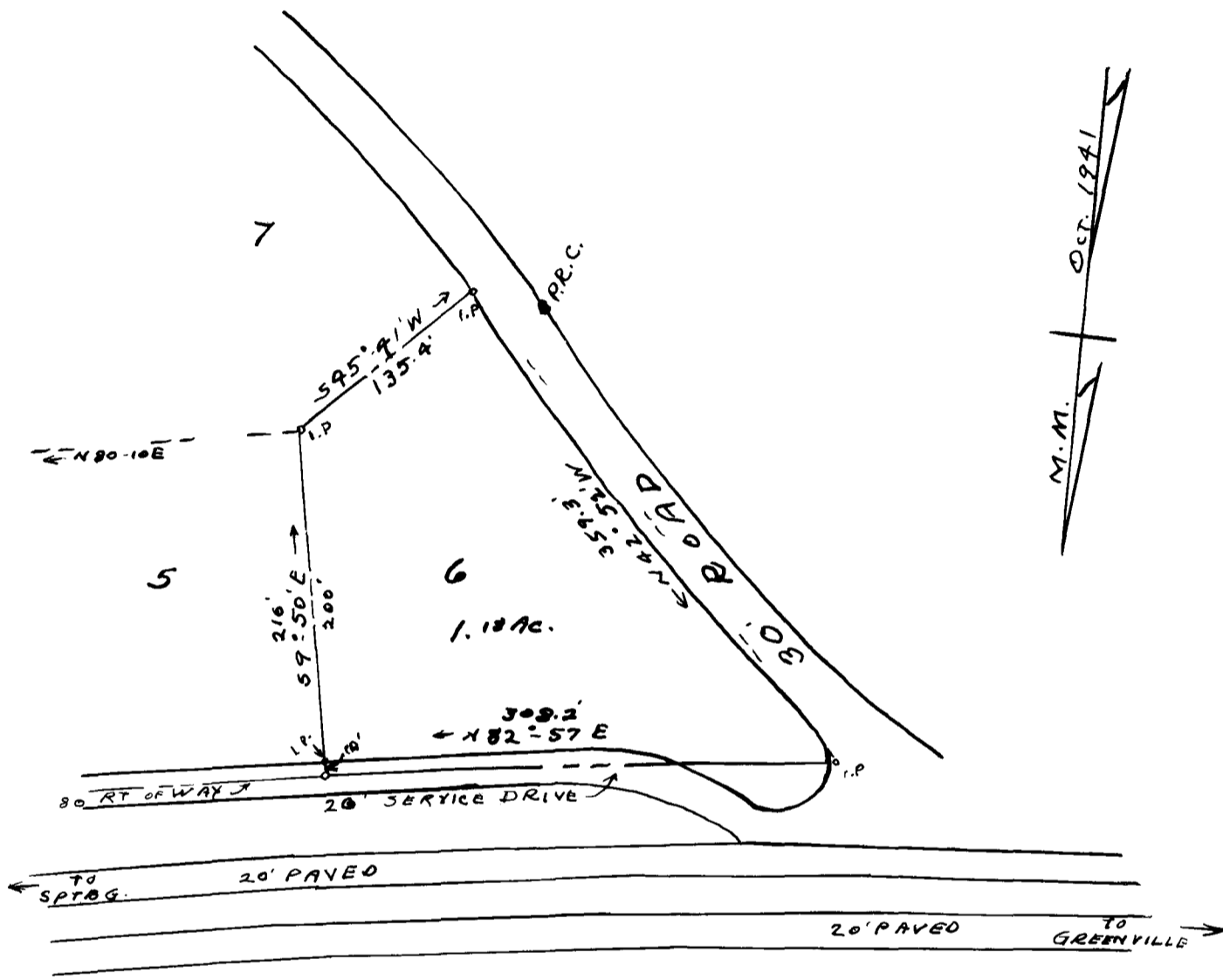


EX PARTE

A. H. CHAPMAN



GREENVILLE HIGHWAY
U. S. # 29

PROPOSED CONVEYANCE TO
A. H. CHAPMAN
NEAR THE CITY OF SPARTANBURG, S. C.

SCALE: 1" = 100' OCT. 3, 1941

BEING LOT 6 ON PROPOSED SUBDIV. OF CARO C. POWELL
PROP. MADE BY THE HARWOOD BEEBE CO. MAY 1939

J. H. GOOCH, SUR.
SPARTANBURG, S. C.
FIELD: C. B. VASS

Registered, Certified, and Examined Oct. 4, 1941 at 9:29 A.M.