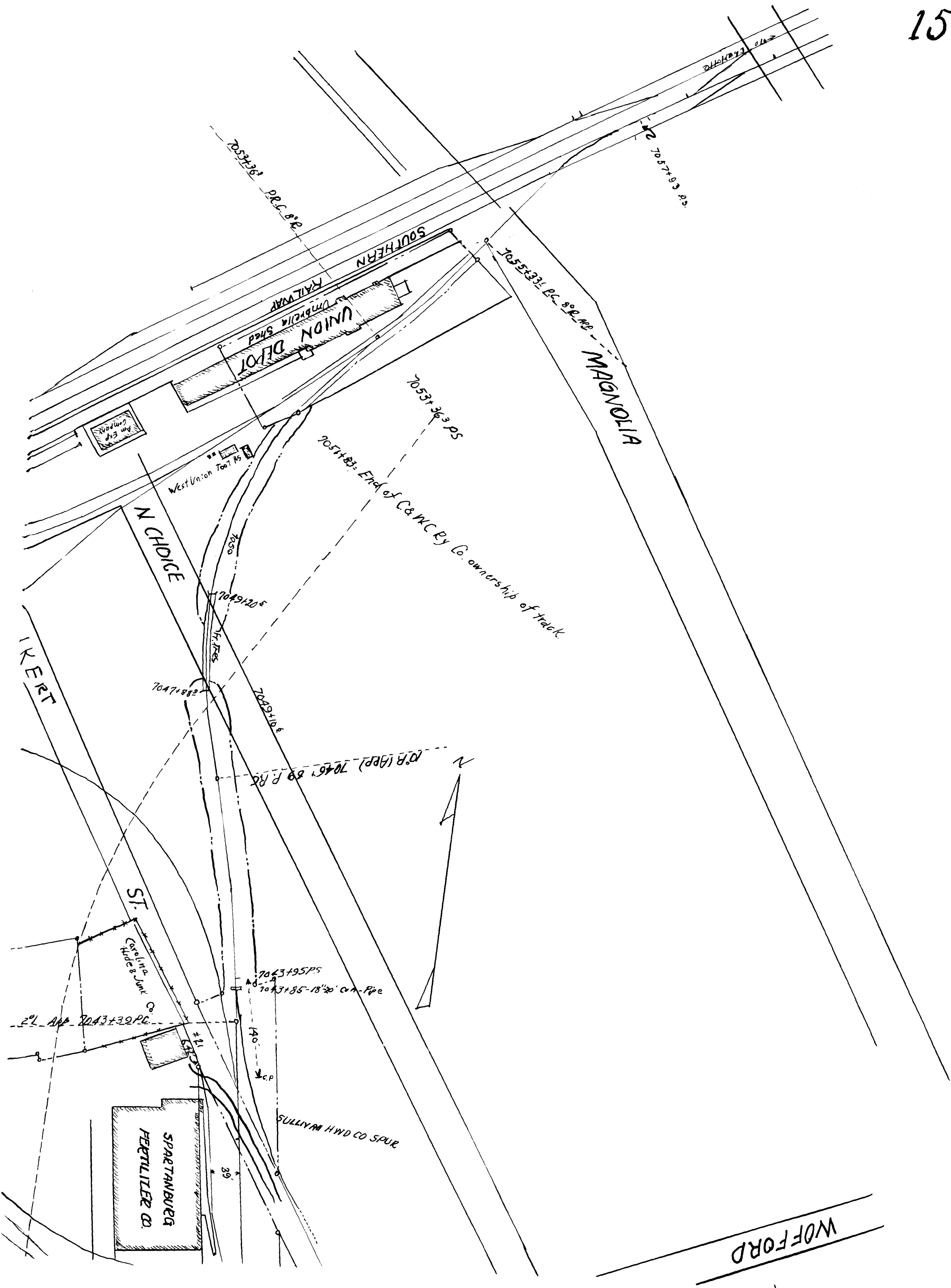
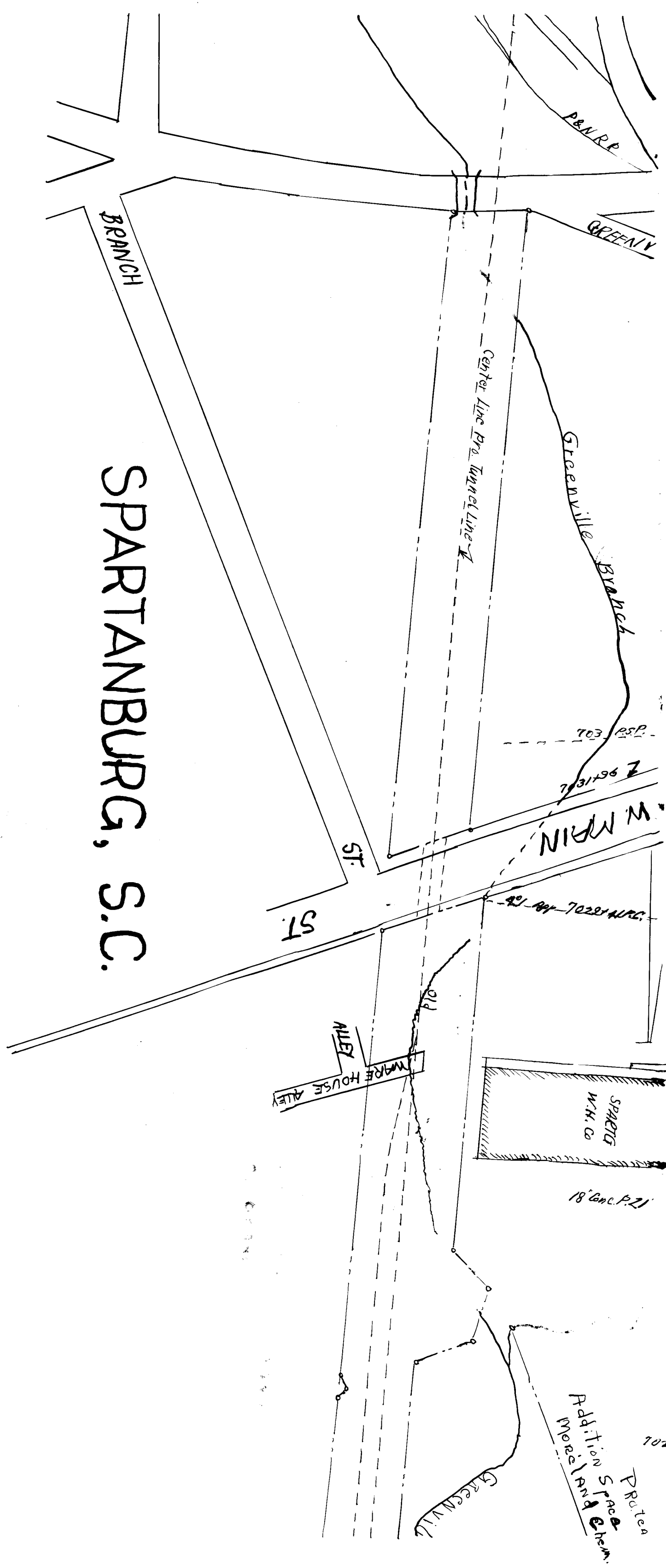


EX PARTE

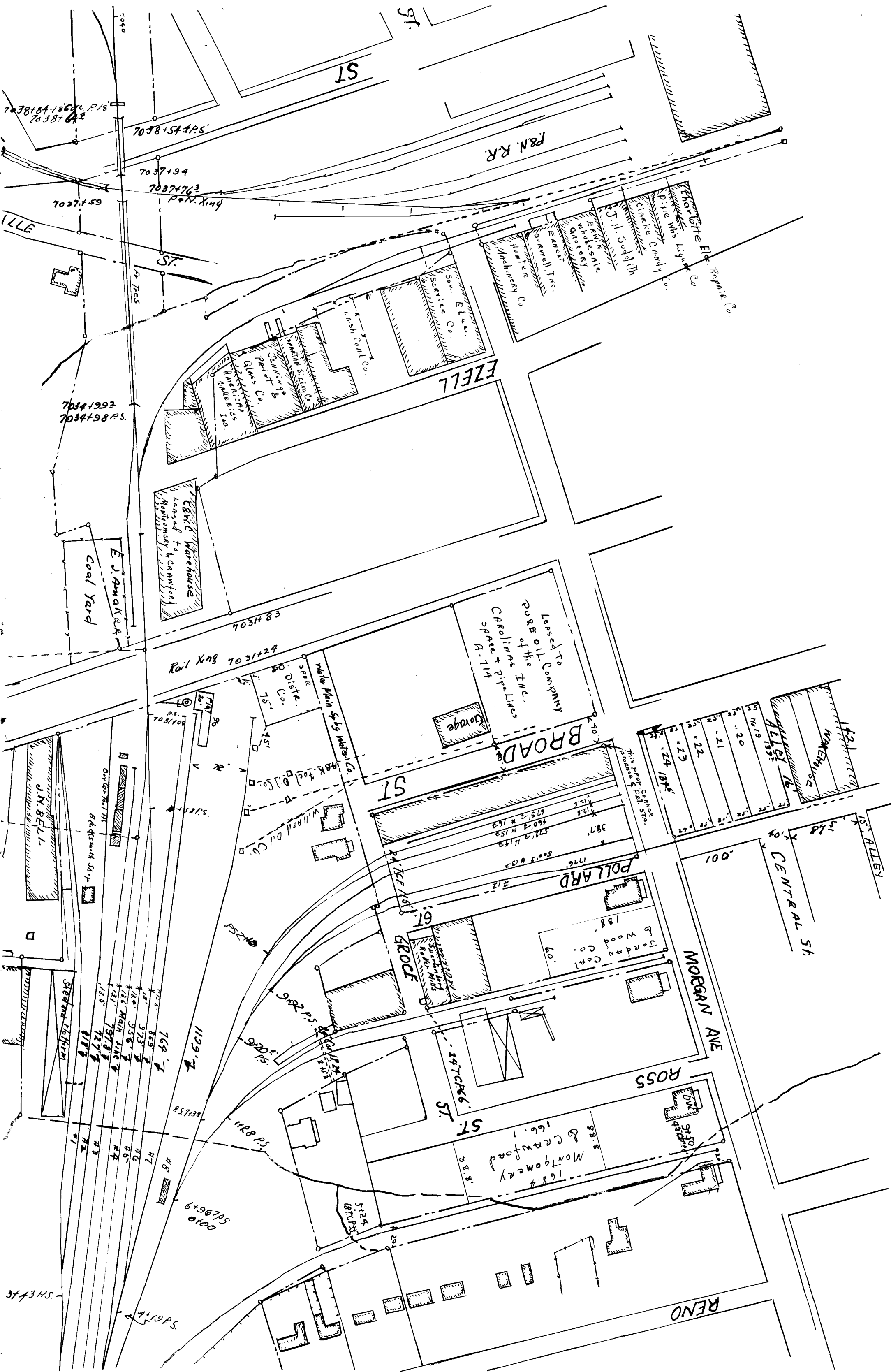
CHARLESTON & WESTERN CAROLINA RAILWAY CO.

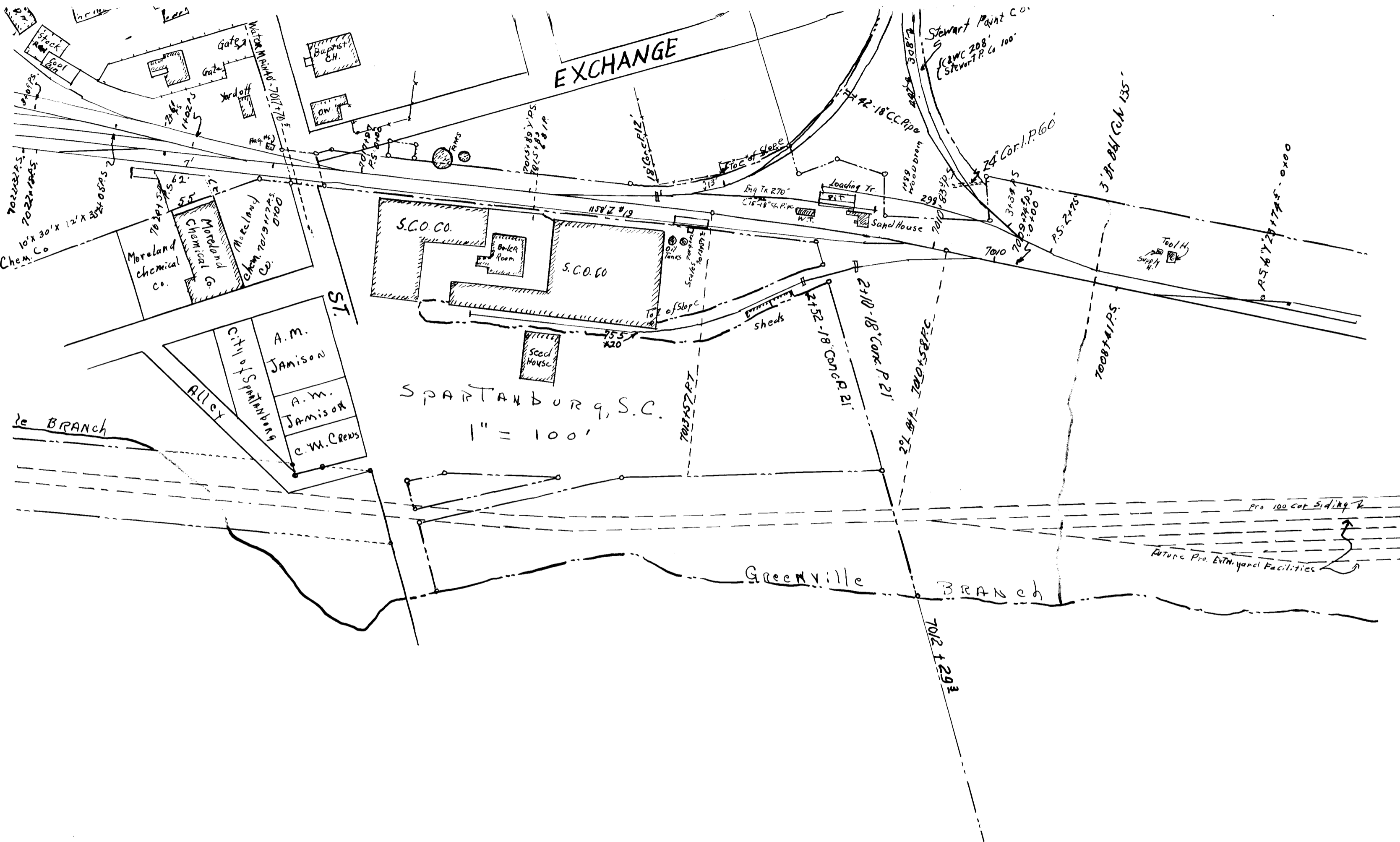






SPARTANBURG, S.C.





STATION MAP - TRACKS & STRUCTURES

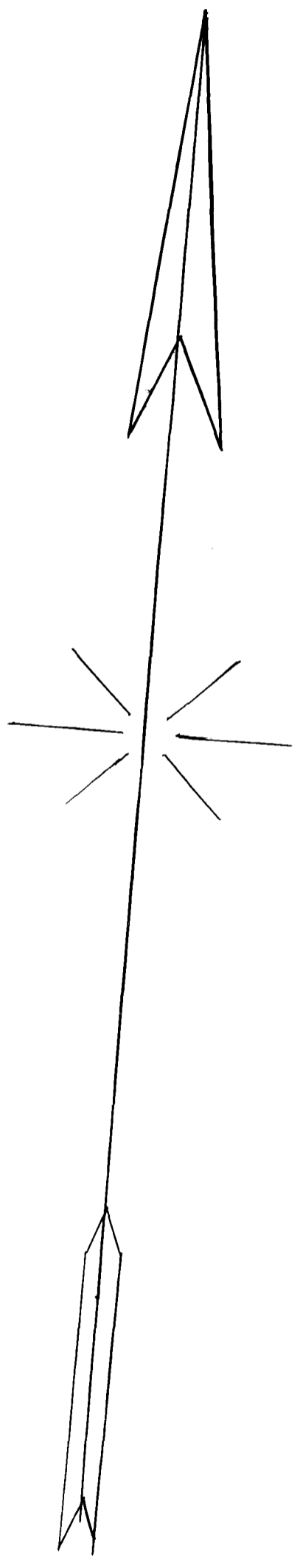
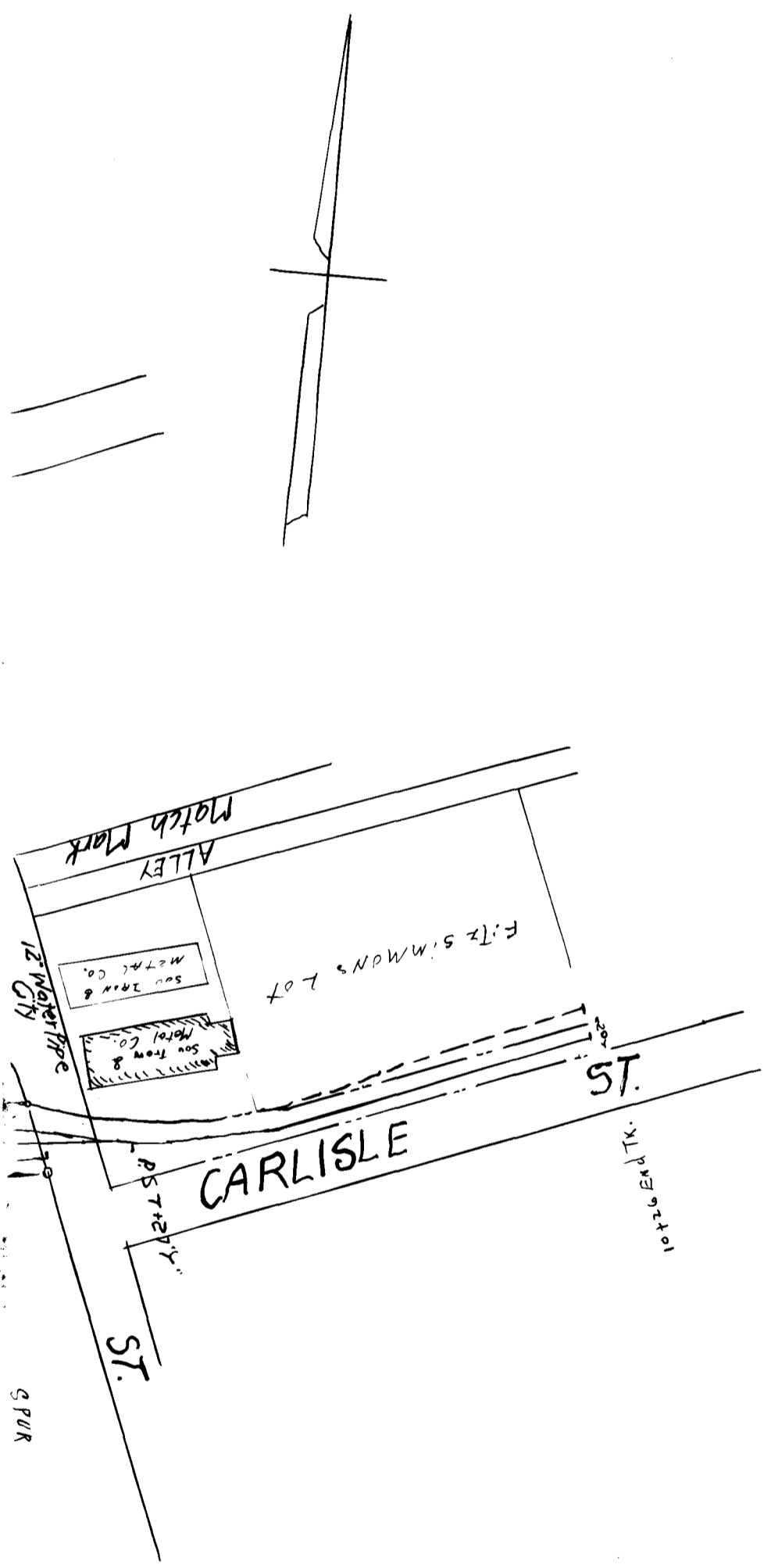
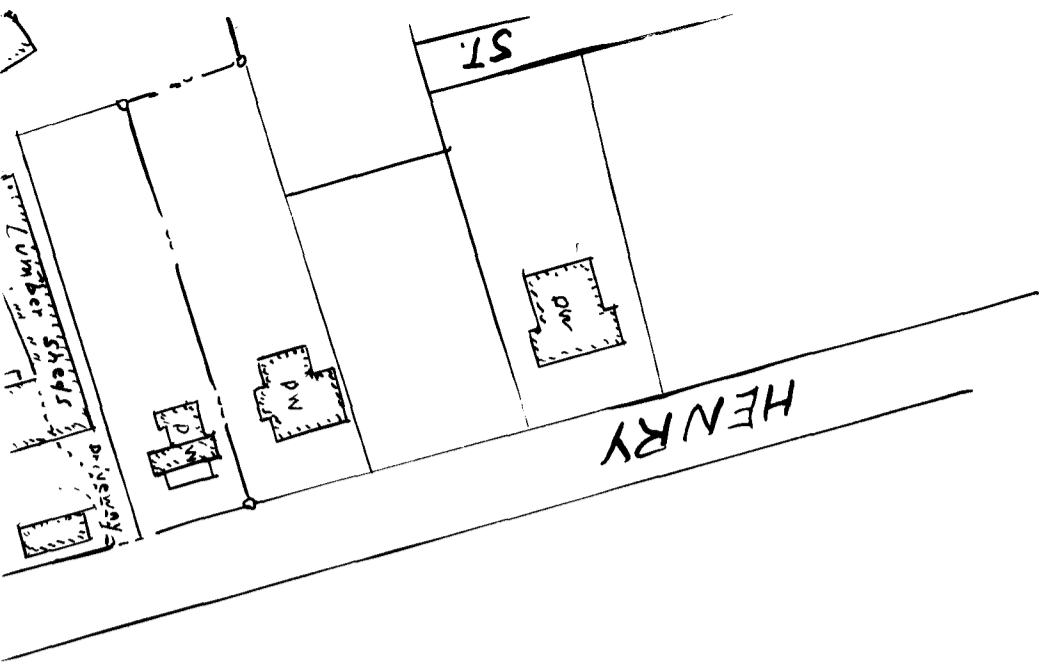
CHARLESTON & WESTERN CAROLINA RAILWAY CO.

ST. 1st of Valuation Section 1A of Charleston & Western Carolina Railway Co. Spartanburg Division from survey station 7012+29² to survey station 7051+83

STATION 7012+29² TO STATION 7051+83
SCALE: 1 IN. = 100 FT JUNE 30 1915

ENGINEER OF ROADWAY

OFFICE OF ENGINEER OF ROADWAY
AUGUSTA, GA.



Registered, Certified, and Examined Sept. 29, 1941 at 4:28 P.M.