

EX PART II
E. L. ARCHER LANDS

E. L. ARCHER LANDS

NEAR

SPARTANBURG

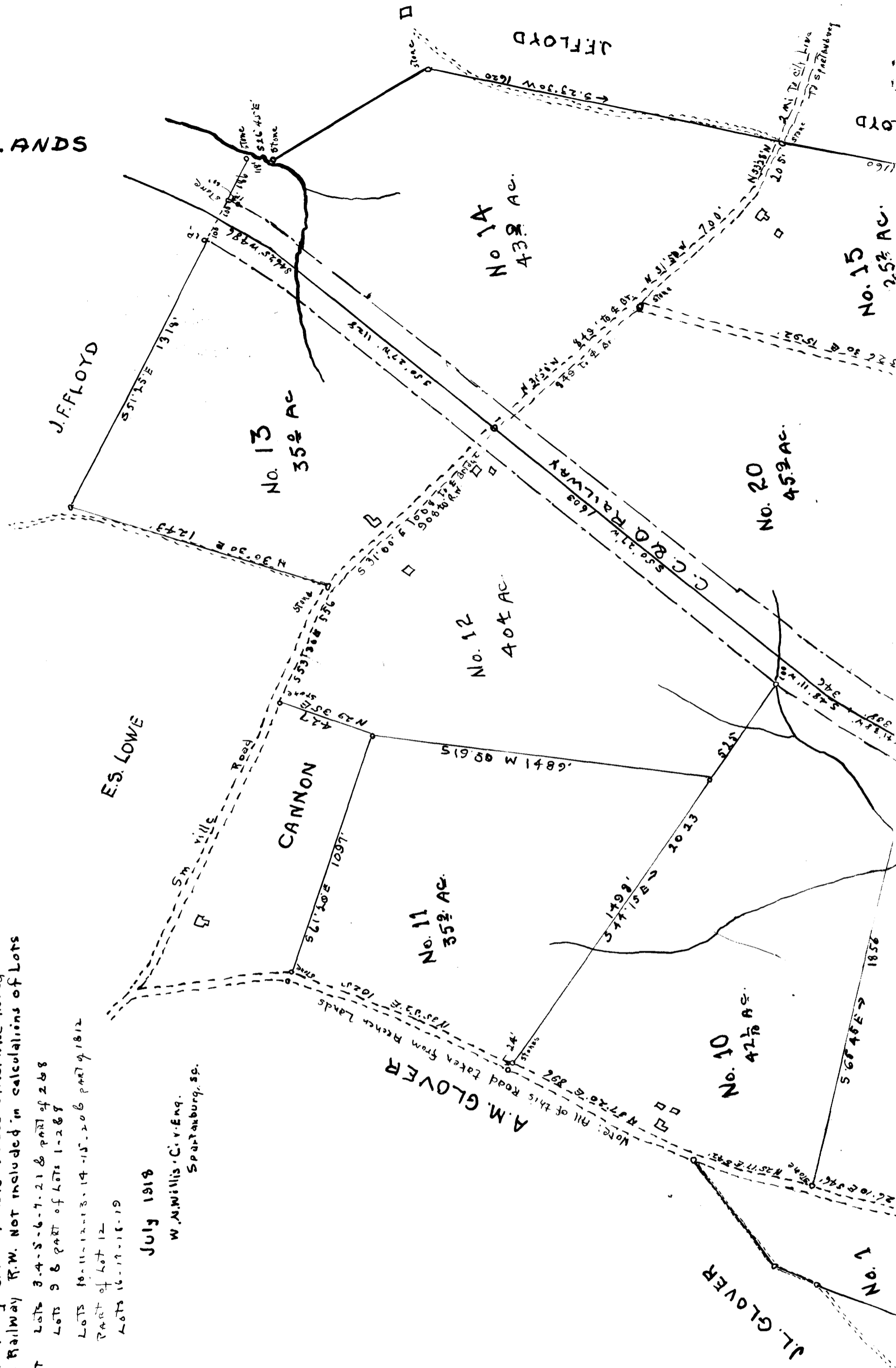
SPARTANBURG COUNTY - SOUTH CAROLINA

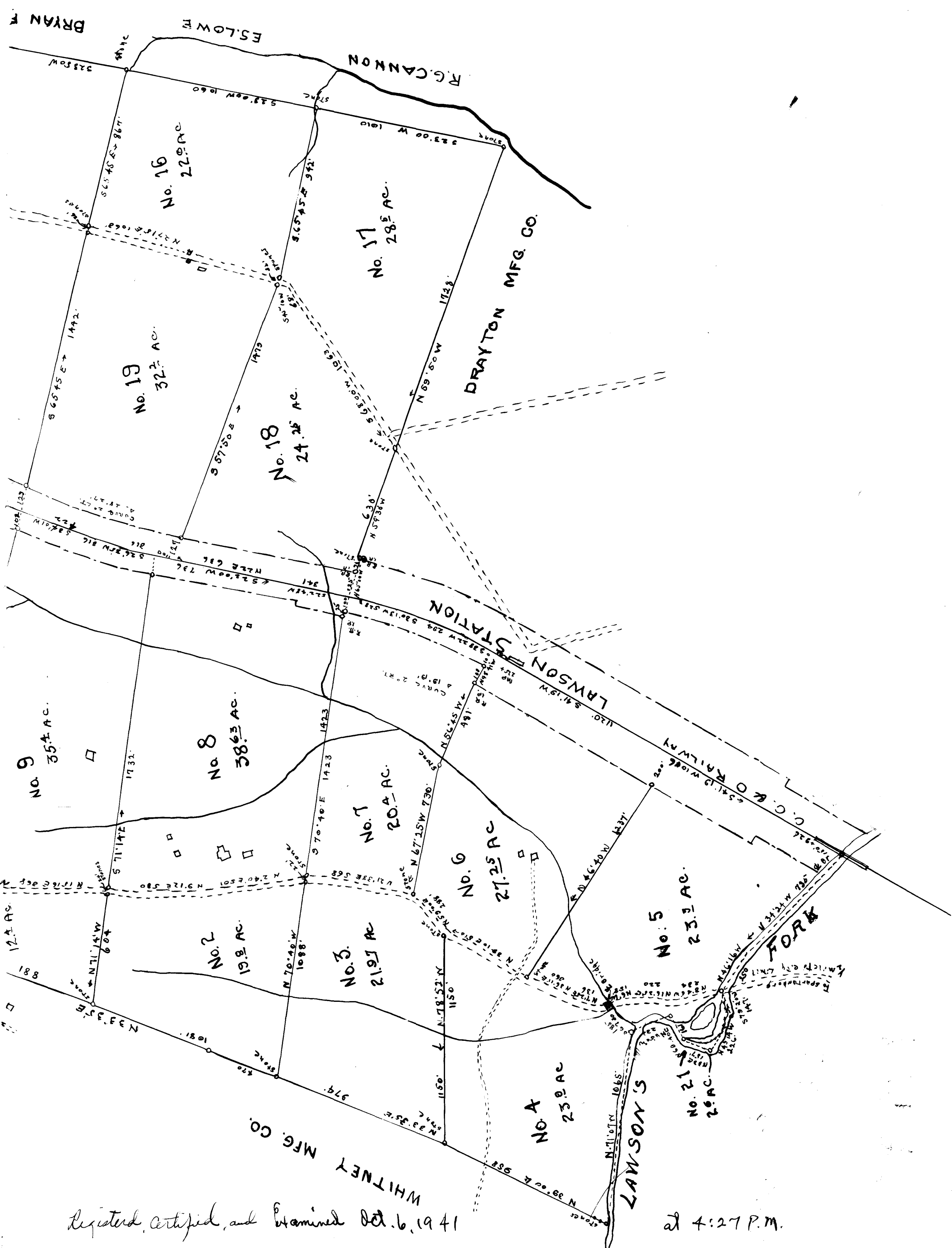
Center of Roadway is Property Line of Lots unless otherwise noted
Areas of Public Roads & Railway R.W. NOT INCLUDED in calculations of Lots

- From J. B. Archer Est Lots 3-4-5-6-7-21 & part of 268
- From J. B. Archer Lots 9 & part of Lots 1-2-89
- From Sallie F. Wilson Lots 10-11-12-13-14-15-20 & part of 1812
- From SNEATH E Ivery part of Lot 12
- From Walker Amos Lots 16-17-18-19

Scale 1" = 400'

July 1918
W. M. Willis, Civ. Eng.
Spartanburg, S.C.





Registered, certified, and Examined Oct. 6, 1941

at 4:27 P.M.