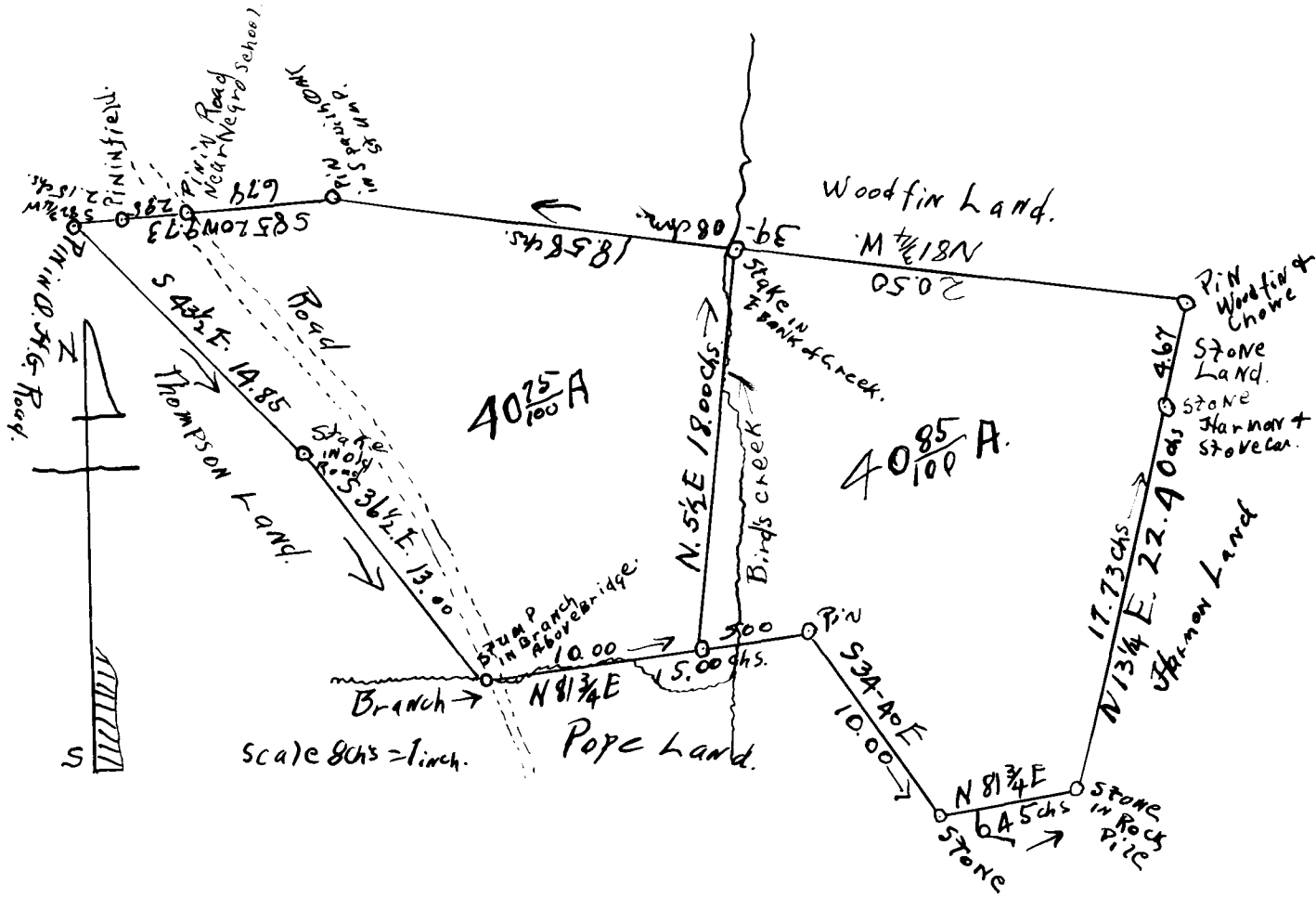


EX PARTE

E. E. CROW



The Above Plat Correctly Represents a Plat  
 of Land Surveyed and Divided Line Drawn for  
 Mr. E. E. Crow of Fairforest, S.C. Total Area 81.6 Acres.  
 As Surveyed By me This 25<sup>th</sup> Day of April, 1941.

D. N. Loftis Surveyor.  
 R2 Campbell S.C.

Registered, Certified, and Examined Oct. 24, 1941 at 12:05 P.M.