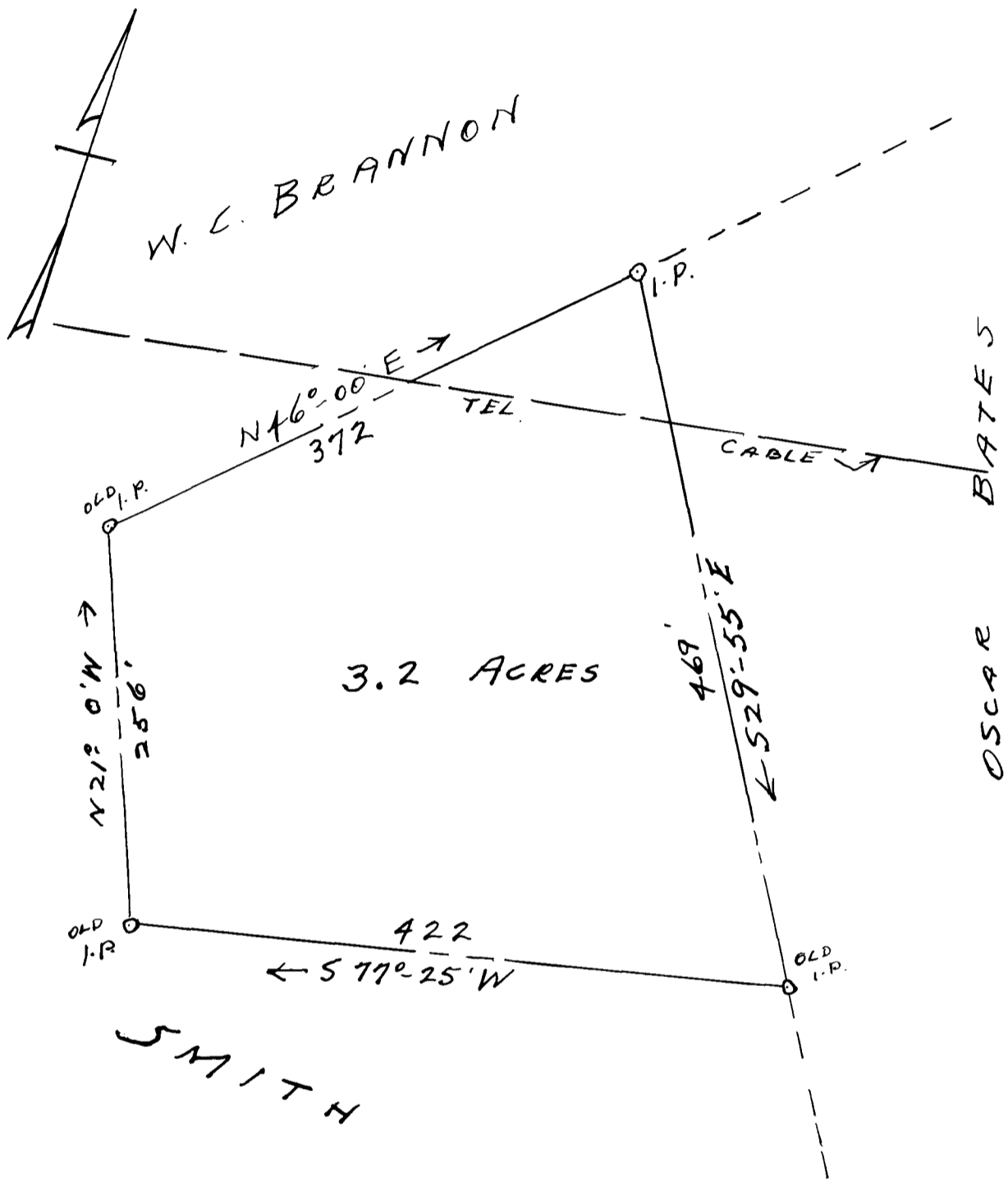


166

EX PARTE

J. M. SAVAGE



PROPERTY OF  
 J. M. SAVAGE  
 NEAR CLIFTON MILL No. 2  
 SPARTANBURG COUNTY, S.C.  
 SCALE: 1"=100' SEPT. 16, 1941

J. H. GOOCH, SUR.  
 SPARTANBURG, S.C.  
 FIELD. C. B. VASS

Registered, Certified and Examined Oct. 27, 1941 at 3:34 P.M.