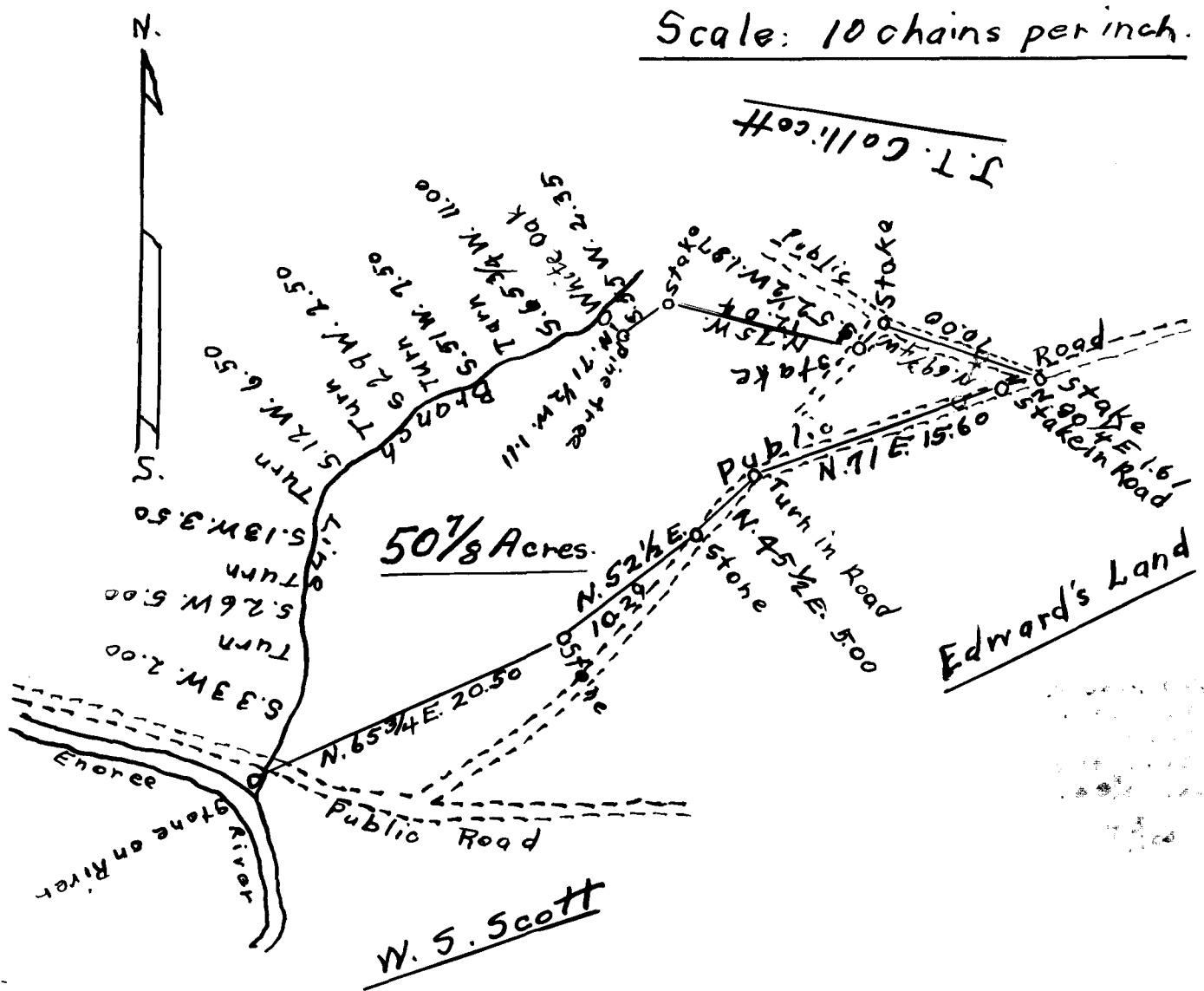


167

EX PARTE

W. L. CAPPS



Spartanburg Co. S. C.

The above plot represents a tract of land belonging to W. L. Capps. Containing fifty and seven-eighths acres more or less. Copied from various surveys. Completed Nov. 17, 1923.

S. G. Anderson & Sons.
Surveyors.

Registered, Certified, and Examined Oct. 29, 1941, at 10:20 AM.